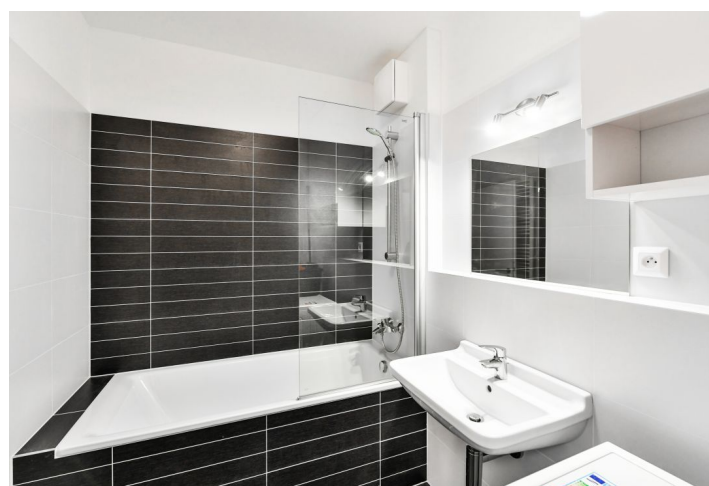
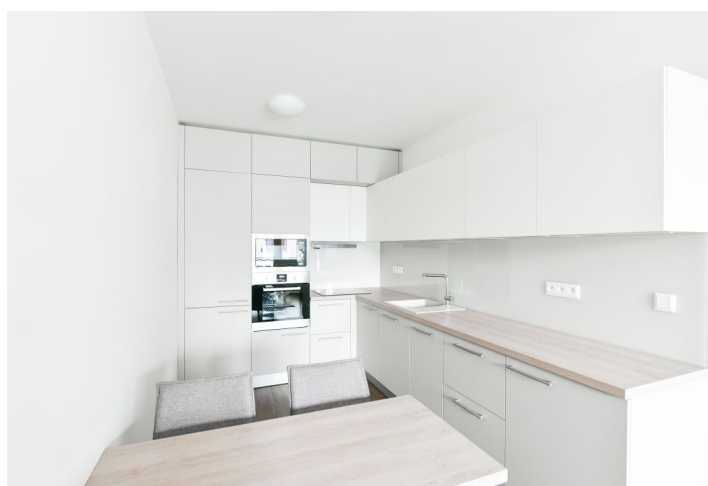
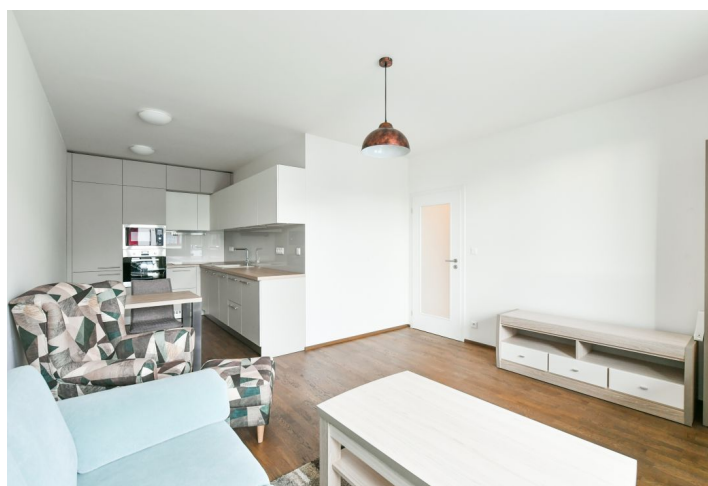




## Apartment One-bedroom (2+kk)

Rented

53 m<sup>2</sup>, Prague 5, Jinonice, Pod Stolovou horou





## Apartment One-bedroom (2+kk)

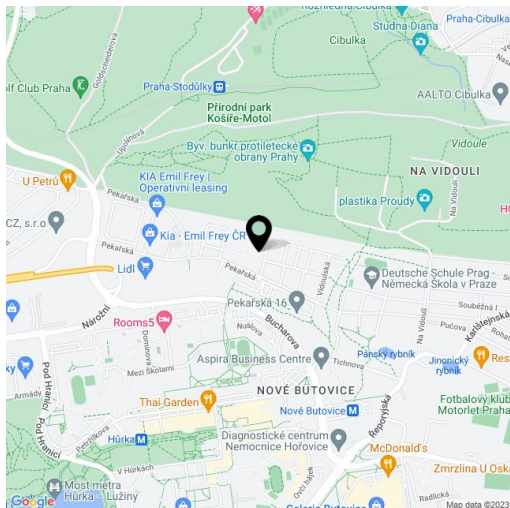
**Rented**53 m<sup>2</sup>, Prague 5, Jinonice, Pod Stolovou horou

|                  |                   |
|------------------|-------------------|
| Total area       | 58 m <sup>2</sup> |
| Floor area*      | 53 m <sup>2</sup> |
| Balcony          | 5 m <sup>2</sup>  |
| Parking          | Garage parking.   |
| Garage           | Yes               |
| Cellar           | Yes               |
| PENB             | B                 |
| Reference number | 38028             |
| Available from   | Immediately       |

This is a furnished 1-bedroom apartment with a balcony on the fifth floor of a modern low energy, environmentally friendly building with a lift and underground parking in the recently built Botanica residential project. Located in a green neighborhood bordering the Vidoule natural park, close to the Prokopské and Dalejské Valleys with plenty of recreational opportunities, mere steps from the German School and within easy reach of the Japanese School and the airport. Quiet location with full amenities close by, within walking distance of bus stops and Nové Butovice metro station.

The apartment offers a living room with a fully fitted open plan kitchen and a dining area, a bedroom, a bathroom including a bathtub with a shower screen, a separate toilet, and an entrance hall with built-in wardrobes. The **balcony** is accessible from both main rooms.

Wooden floors, tiles, security entry door, automatic external blinds, washing machine, induction cooktop, dishwasher, microwave oven, basic kitchenware, garden furniture, UPC cable connection, **cellar**, chip entry to the building. A **garage parking** space is included. Deposit for service charges CZK 3,500. Electricity is billed separately.



\* Area of the unit according to the Civil Code. The area consists of the sum total area of the entire unit bounded by perimeter walls.