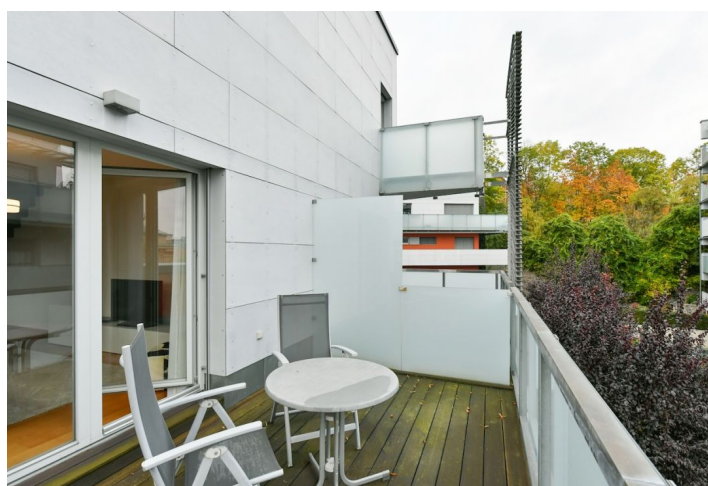




Apartment Two-bedroom (3+kk)

Rented

108 m², Prague 6, Dejvice, Kolejní





Apartment Two-bedroom (3+kk)

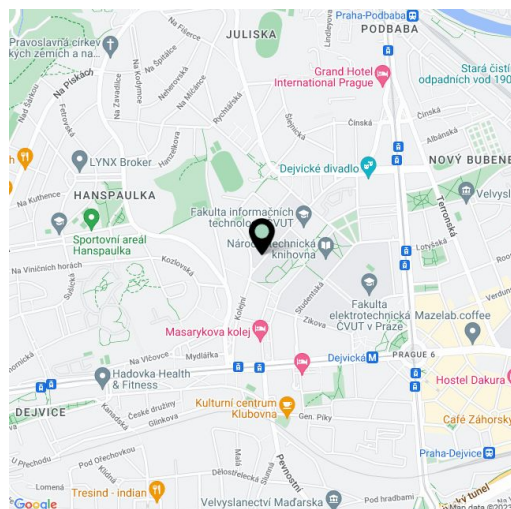
Rented108 m², Prague 6, Dejvice, Kolejní

Total area	159 m ²
Floor area*	108 m ²
Terrace	51 m ²
Parking	Garage parking.
Garage	Yes
Cellar	Yes
PENB	G
Reference number	37649
Available from	Immediately

Benefiting from 2 terraces and pretty views of the green residential surroundings, this is a furnished 2-bedroom 2-bathroom split-level apartment. Situated on the third floor of a modern building with a lift and parking, right next to the prestigious residential area of Hanspaulka. Great location steps from the Czech Technical University campus, just minutes from Dejvická metro station with very quick access to the city center and full amenities in the area. Conveniently located for the airport and numerous Prague 6 international schools.

The lower level of the apartment includes a living room with a dining area, a fully fitted open plan kitchen and access to a wraparound **terrace**, a toilet, a utility room, and an entrance hall with built-in wardrobes. The upper floor features a master bedroom with an en-suite bathroom (bathtub, bidet, toilet) and access to the second **terrace**, a second bedroom, and a family bathroom (walk-in shower, toilet).

Air-conditioning, hardwood floors, tiles, French windows, automatic exterior blinds, central heating, washer, dryer, **Miele** kitchen appliances, induction cooktop, dishwasher, Nespresso coffee maker, kitchenware, garden furniture, TV, video entry phone, **cellar**. One or two **garage parking** spaces are available at CZK 3,000/space/month. Monthly deposit for service charges, water and heating: CZK 6,300. Electricity is billed separately.



* Area of the unit according to the Civil Code. The area consists of the sum total area of the entire unit bounded by perimeter walls.