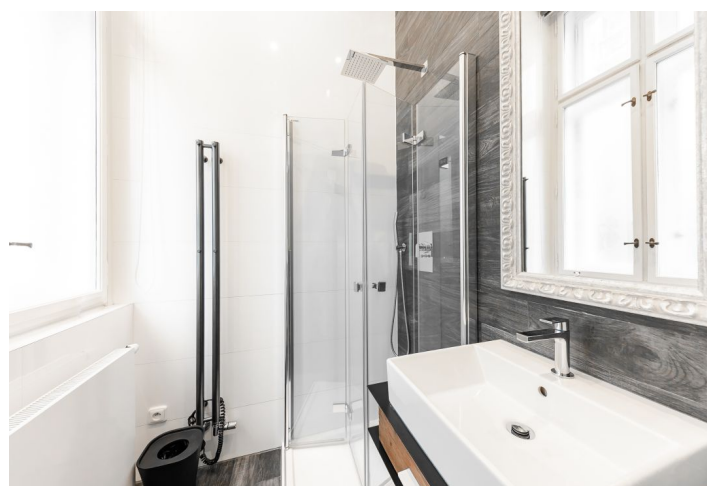
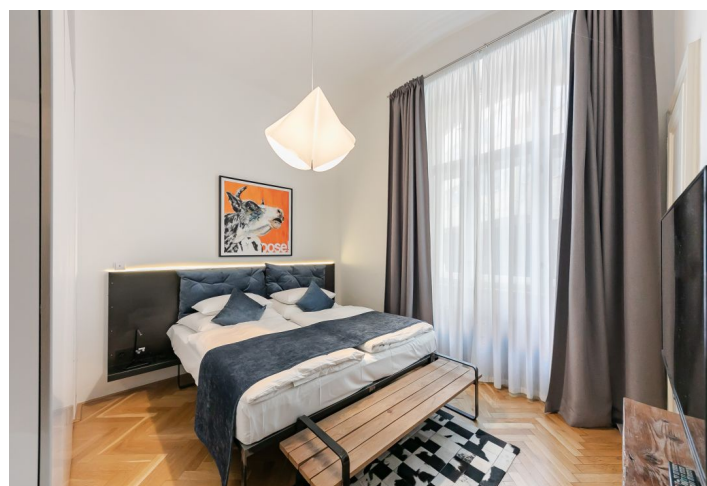
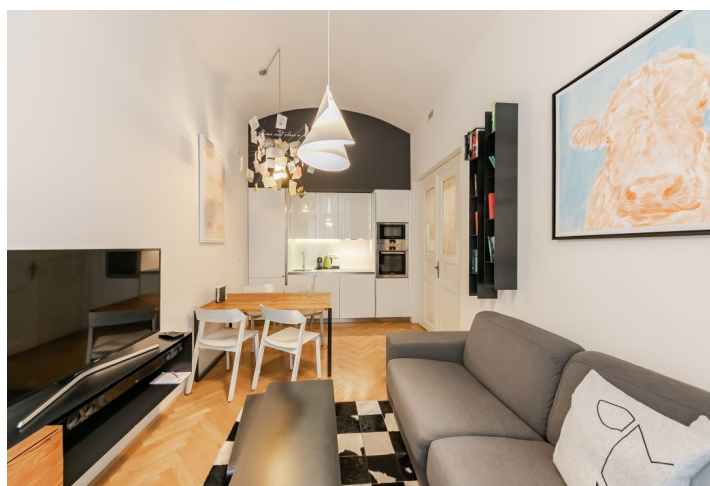




## Apartment One-bedroom (2+kk)

Rented

39 m², Prague 2, Nové Město, Myslíkova





## Apartment One-bedroom (2+kk)

**Rented**

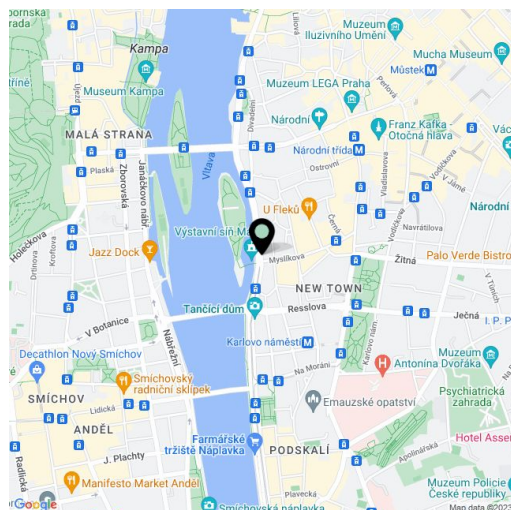
39 m², Prague 2, Nové Město, Myslíkova

Total area	39 m²
Parking	Garage parking is available nearby at an additional fee.
Garage	Yes
Cellar	-
PENB	G
Reference number	37481
Available from	Immediately

This is a high standard, fully furnished 1-bedroom apartment on the first floor of a meticulously refurbished residential building from 1905, with a lift, camera system, ventilation system and preserved original details. Centrally located a few minutes from the Vltava riverbank, the Žofín Palace and the National Theater, with full amenities within immediate reach, just a few min. walk from the Karlovo náměstí metro station, and within walking distance of Wenceslas Square. Building amenities include 24/7 property management, concierge service, traditional Thai massage studio, La Petite France bakery and the Poke Haus Hawaiian bistro. The tenants are also welcome to use the services of the next door hotel including a reception, a private spa and sauna, a cafe and the QQ Asian Kitchen restaurant.

The apartment offers a living room with a fully fitted open plan kitchen and a dining area, a bedroom with built-in wardrobes and an en-suite shower room, a separate toilet, and an entrance hall with built-in storage.

**Heat recovery ventilation**, high ceilings with stucco ornaments, large wooden triple glazed windows, **solid wood parquet floors**, tiles, custom made furniture, built-in storage, independent gas boiler, washing machine, dishwasher, microwave oven, basic kitchenware, 2 TV sets, high speed Internet. **Garage parking** is available nearby at an additional fee. Service charges and utilities including the Internet and satellite connection: CZK 3,500/month. **Mid term rental** (minimum of 1 month) is available at a higher rent.



\* Area of the unit according to the Civil Code. The area consists of the sum total area of the entire unit bounded by perimeter walls.