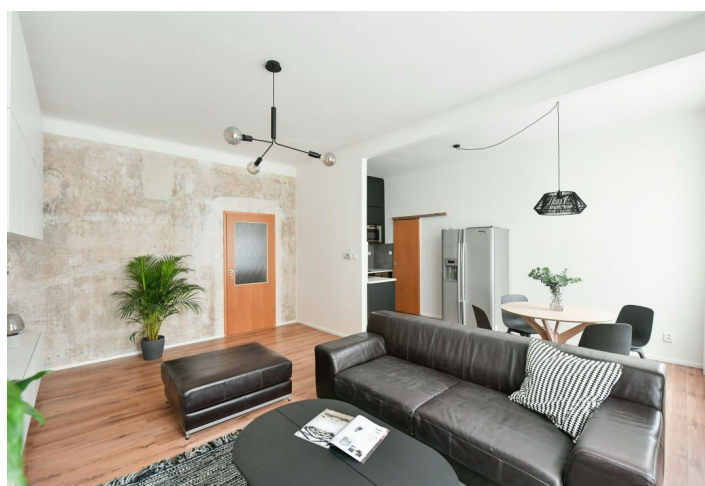
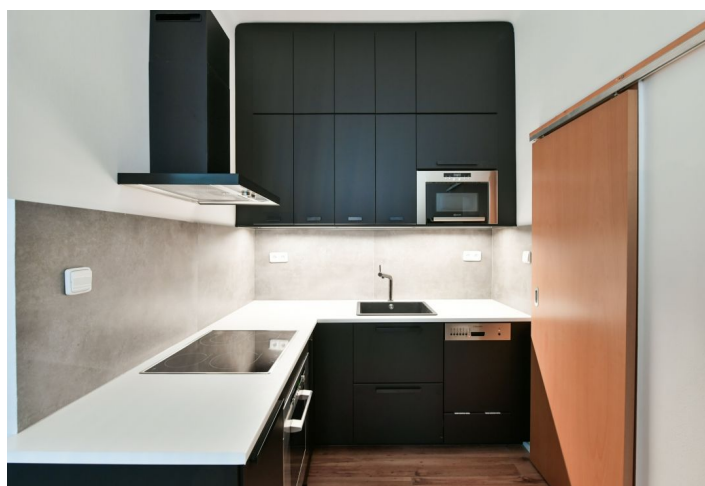




## Apartment Two-bedroom (3+kk)

Rented

109 m<sup>2</sup>, Prague 7, Holešovice, Šternberkova





## Apartment Two-bedroom (3+kk)

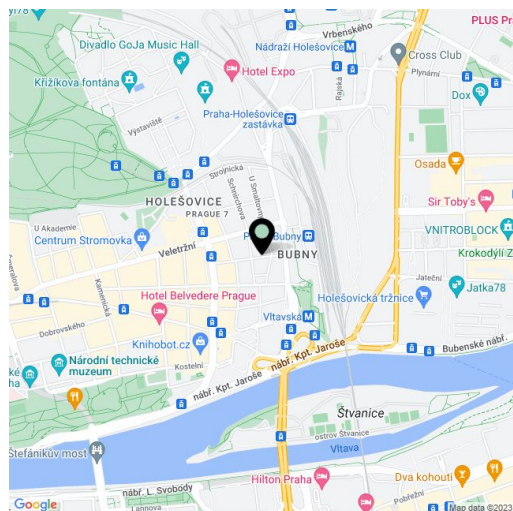
**Rented**109 m<sup>2</sup>, Prague 7, Holešovice, Šternberkova

|                  |                    |
|------------------|--------------------|
| Total area       | 109 m <sup>2</sup> |
| Parking          | -                  |
| Cellar           | Yes                |
| PENB             | G                  |
| Reference number | 37477              |
| Available from   | Immediately        |

This is a semi furnished renovated 2-bedroom apartment on the third floor of a traditional apartment building with a lift, just a few min. walk from Stromovka Park in Holešovice, Prague 7. Location with very quick access to the city center, two blocks from a tram stop, and within walking distance of Vltavská metro station and Letná Park. Full amenities are available within easy reach incl. the Stromovka shopping center and numerous cultural venues, e.g. the National Gallery and Bio OKO cinema.

The apartment includes a huge entrance hall, a living room with a dining area and a fully fitted open plan kitchen, two bedrooms, a shower room, a separate toilet, a **fitted walk-in closet**, and two storage rooms.

Laminated floors, large windows, gas boiler, washing machine, dishwasher, microwave oven, American type fridge, **cellar**. Monthly deposit for service charges and water consumption: CZK 1000 for one person. Gas and electricity are billed separately.



\* Area of the unit according to the Civil Code. The area consists of the sum total area of the entire unit bounded by perimeter walls.