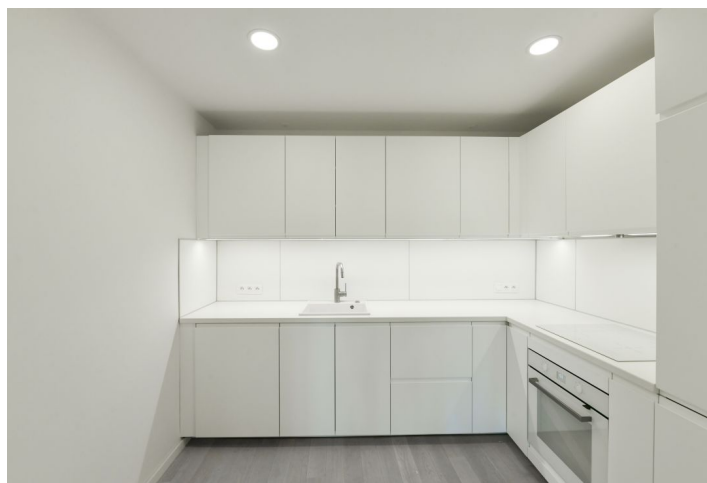
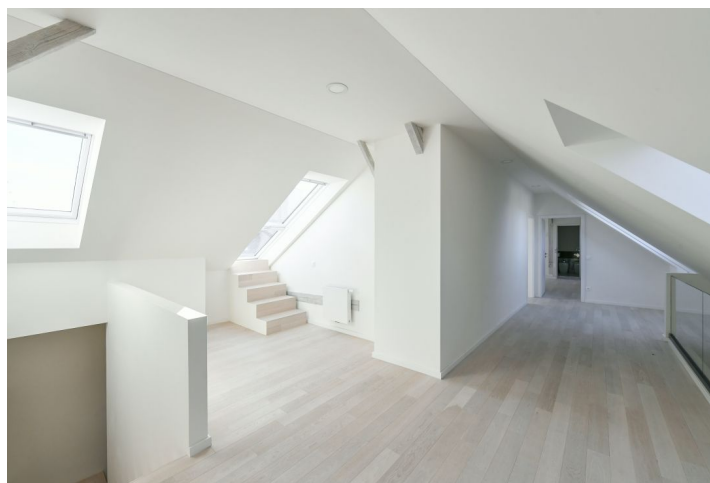
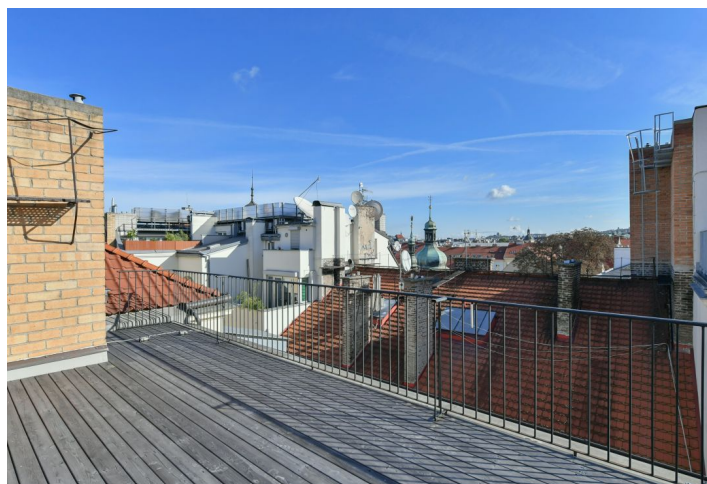
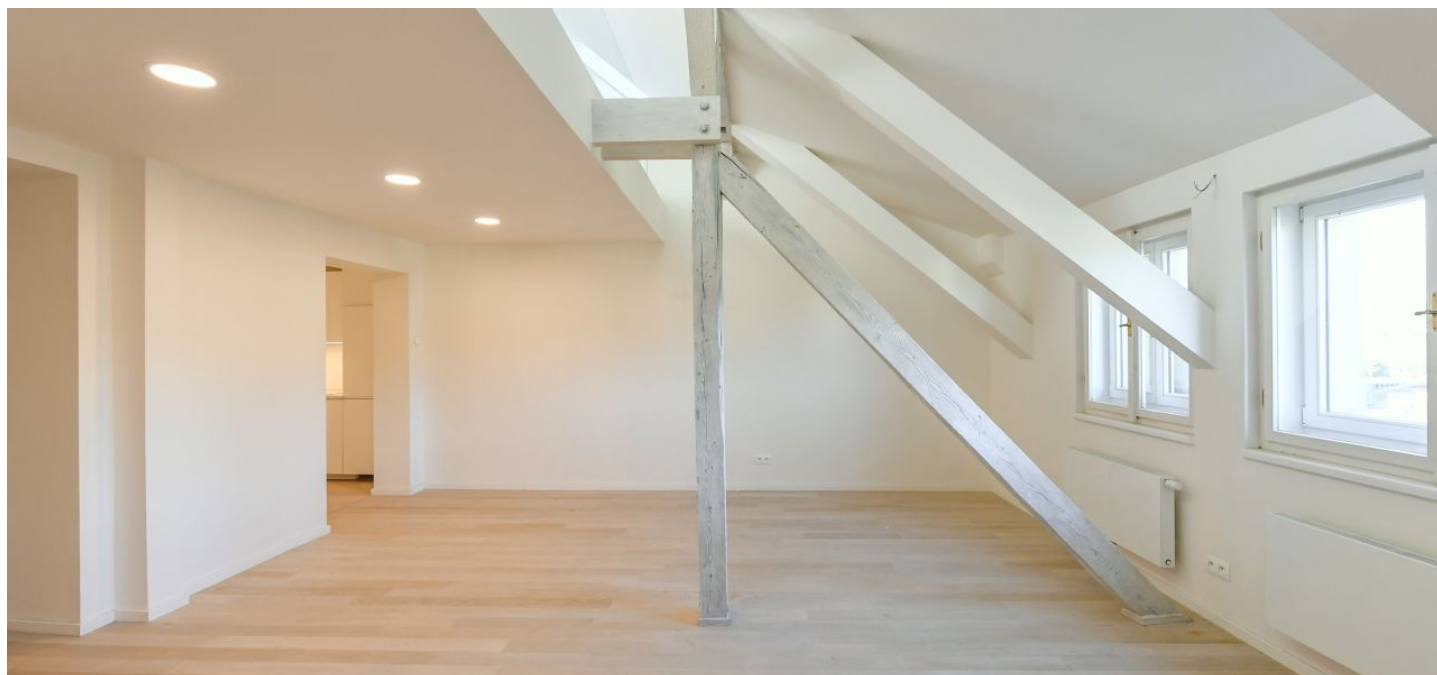




Apartment Three-bedroom (4+kk)

Rented

166 m², Prague 1, Nové Město, Masarykovo nábřeží





Apartment Three-bedroom (4+kk)

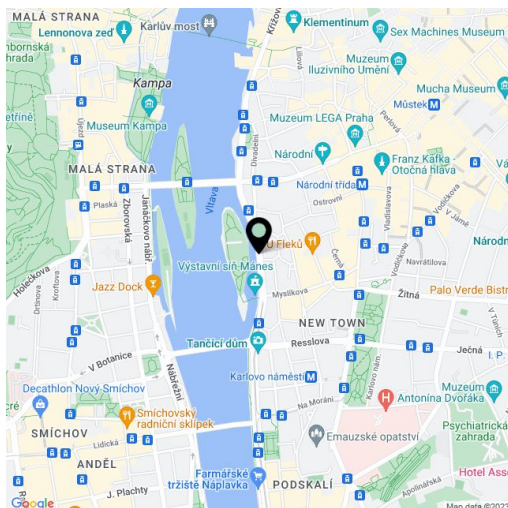
Rented166 m², Prague 1, Nové Město, Masarykovo nábřeží

Total area	211 m ²
Floor area*	166 m ²
Terrace	45 m ²
Parking	-
Cellar	Yes
PENB	G
Reference number	37407
Available from	Immediately

Boasting a beautiful riverfront location and views of the Vltava river, the Prague Castle, Petřín Hill and the Žofín Palace, this contemporary 3-bedroom 3-bathroom attic apartment with 2 terraces (total of 45 m²) is situated on the 5th floor of a well kept fully renovated traditional building with a lift. Set in an attractive central location in close vicinity of the National Theater, only a short walk from the Old Town and Wenceslas Square. Location with very good transportation connections (trams are a few steps away, metro within walking distance) and full amenities and services in the area.

The lower level features a living room with a fully fitted open kitchen, a bedroom with an en-suite shower room, a separate toilet, and an open entrance hall. The upper floor includes a large **gallery** with **terrace** access, a master bedroom with an en-suite bathroom (bathtub, toilet, bidet, storage room) and access to a second **terrace**, plus a bedroom / study with a built-in wardrobe and an en-suite bathroom (bathtub, toilet, bidet). Both terraces offer views of the historic buildings and spires, the National Museum dome and the Žižkov TV Tower.

Hardwood floors, tiles, gas boiler, dishwasher, video entry phone, **cellar**. Monthly deposit for service charges and water: CZK 900/person. Gas and electricity bills will be transferred to the tenant.



* Area of the unit according to the Civil Code. The area consists of the sum total area of the entire unit bounded by perimeter walls.