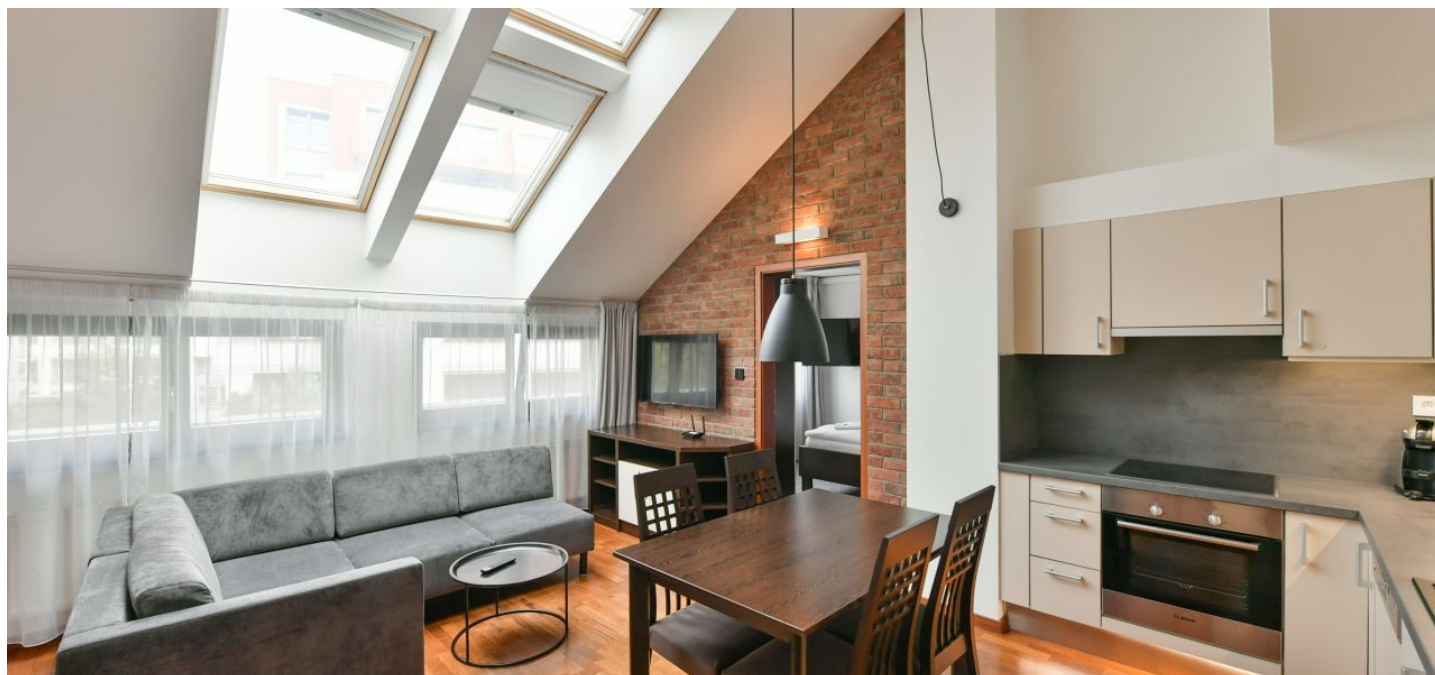




## Apartment Two-bedroom (3+kk)

Rented

52 m², Prague 2, Nové Město, Na Slupi





## Apartment Two-bedroom (3+kk)

**Rented**

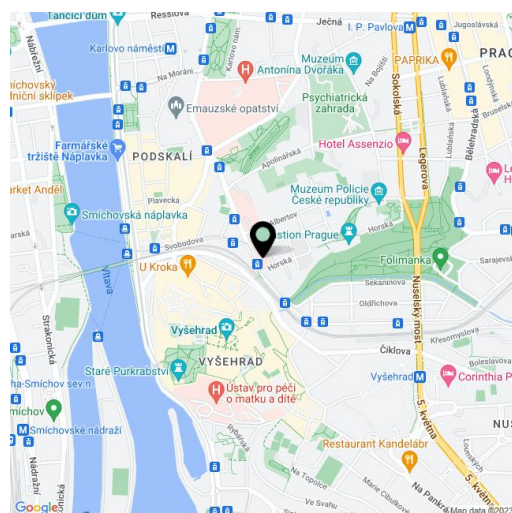
52 m², Prague 2, Nové Město, Na Slupi

Total area	52 m²
Parking	Garage parking.
Garage	Yes
Cellar	-
PENB	B
Reference number	37396
Available from	Immediately

This completely furnished, fully air-conditioned 1-2-bedroom split-level attic apartment is on the third floor of the modern gated residential project Albertov Rental Apartments with a landscaped garden. Located in an attractive Prague 2 neighborhood near the Vyšehrad Castle and Folimanka Park. The project amenities include underground parking, security, a daily reception, camera surveillance system, a 24/7 emergency service, on-site property management, a private vineyard with a gazebo, a supermarket, and a restaurant with free delivery service. The complex is situated in close vicinity of the city center and full amenities, steps from a tram stop and a few minutes from Karlovo náměstí metro station, near the Vltava embankment and the romantic Ztracenka Park.

The interior includes a living / dining room with a fully fitted open plan kitchen, a bedroom, a shower room with a bidet and a toilet, and an entrance hall. There is a large **gallery** with an open bedroom accessible by a staircase from the living room.

**Hardwood floors**, carpets, tiles, central heating, security entry door, built-in wardrobes and storage, washer, dryer, dishwasher, microwave oven, wine fridge, coffee maker, kitchenware, iron and ironing board, bedding, towels, Smart LCD TV, satellite reception, WiFi, video entry phone, chip entry. A garage parking space: CZK 1950/month. Service charges including reception, cleaning and lighting of the common areas, lift, garden maintenance, WiFi and satellite: CZK 4000/month. Monthly deposit for water, heating and electricity: CZK 2000. **Mid term rental** is available at a higher rent. The apartment photos are for illustrative purposes only.



\* Area of the unit according to the Civil Code. The area consists of the sum total area of the entire unit bounded by perimeter walls.