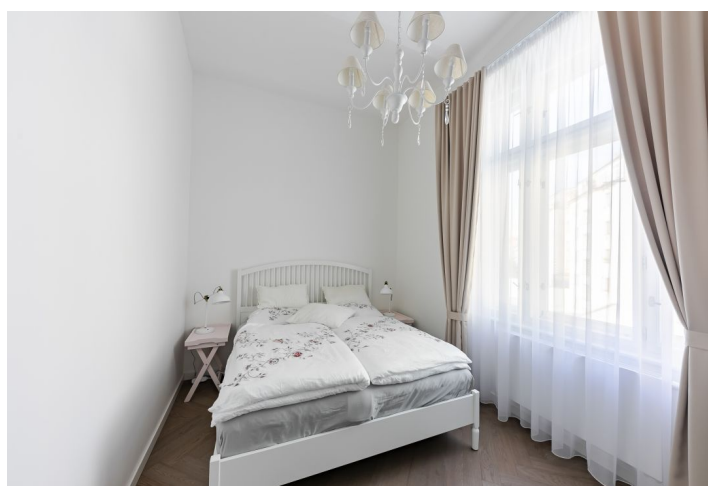




## Apartment Two-bedroom (3+kk)

Rented

98.5 m², Prague 10, Vršovice, Moskevská





## Apartment Two-bedroom (3+kk)

**Rented**

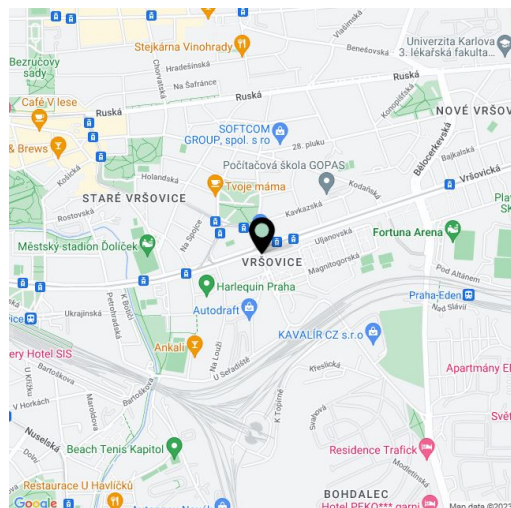
98.5 m², Prague 10, Vršovice, Moskevská

Total area	100 m²
Floor area*	99 m²
Balcony	2 m²
Parking	A parking space next to the building.
Cellar	Yes
PENB	E
Reference number	37251
Available from	Immediately

This fully refurbished, fully furnished 2-bedroom 2-bathroom apartment with a balcony and green courtyard views is on the second floor of a corner apartment building from 1910, designed by the famous architect Osvald Polívka. The unique building that has recently been completely renovated with great attention to detail is located in a quiet residential neighborhood with many elegant villas within walking distance as well as the Heroldovy and Havlíčkovy Sady Parks, with complete amenities and services in close vicinity. There is a tram stop steps from the building, and the ride to the Náměstí Míru metro station (line A) takes only a few minutes.

The interior consists of a living room with a fully fitted open plan kitchen and **bay windows** with a dining area, 2 separate bedrooms, 2 bathrooms (bathtub / walk-in shower, toilet), and an entrance hall with access to the **balcony**.

**Hardwood floors**, large format tiles, security entry door, high ceilings, large windows, built-in wardrobes, gas boiler, washing machine, dishwasher, microwave oven, TV, 5.6 m² **cellar**. A **parking space** on the neighboring plot is included. Deposit for service charges and utilities CZK 4.000 per month.



\* Area of the unit according to the Civil Code. The area consists of the sum total area of the entire unit bounded by perimeter walls.