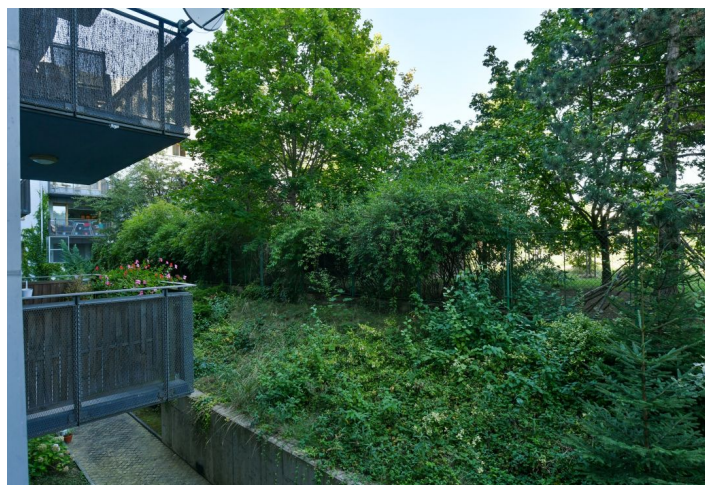
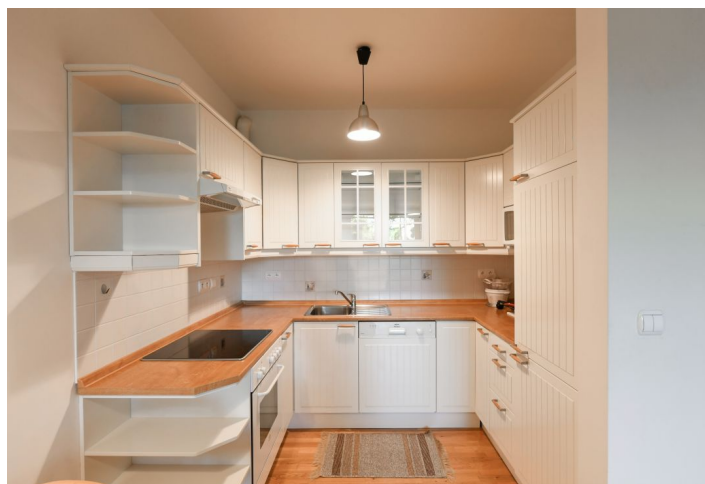




## Apartment One-bedroom (2+kk)

Rented

62 m², Prague 6, Vokovice, Tibetská





## Apartment One-bedroom (2+kk)

Rented

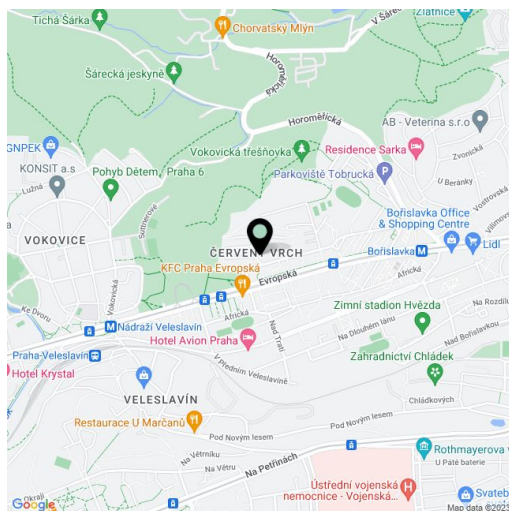
62 m², Prague 6, Vokovice, Tibetská

Total area	62 m²
Parking	-
Cellar	Yes
PENB	G
Reference number	37098
Available from	Immediately

Benefiting from green views, this is a 1-bedroom apartment on the first floor in the contemporary residential project Terasy Červený Vrch with a 24/7 reception, security and underground parking. Located in a quiet street near the wonderful Šárka Valley, with quick access to the airport and the international schools Park Lane, ISP and Riverside School. Full amenities are within easy reach, and it takes just minutes to a tram stop and a few more to Bořislavka metro station, line A (ten min. to the city center).

The interior features a living room with a fully fitted open plan kitchen and a dining area, a bedroom with a fitted **walk-in closet**, a bathroom (bathtub with a shower screen, toilet), and an entrance hall with built-in wardrobes.

**Solid wood parquet floors**, tiles, security entry door, large windows, blinds, central heating, washer, dishwasher, microwave oven, **cellar**, satellite reception, camera system, barrier free access. A **garage parking** space is included. Monthly deposit for service charges, water and heating: CZK 3000. Electricity is billed separately.



\* Area of the unit according to the Civil Code. The area consists of the sum total area of the entire unit bounded by perimeter walls.