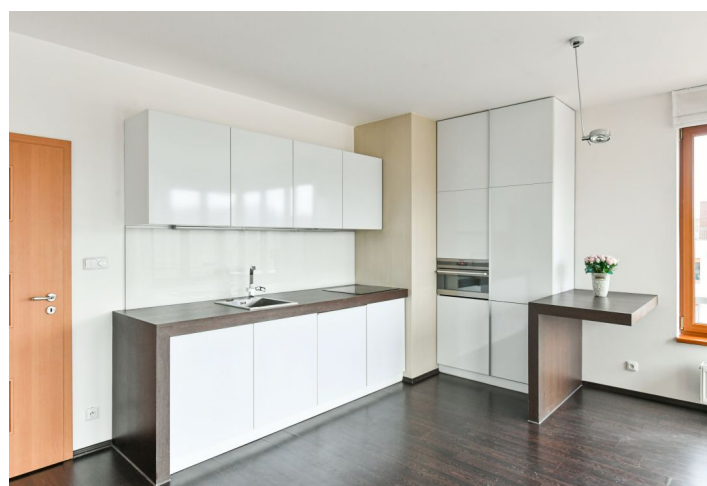




Apartment One-bedroom (2+kk)

Rented

58 m², Prague 5, Smíchov, Na Císařce





Apartment One-bedroom (2+kk)

Rented

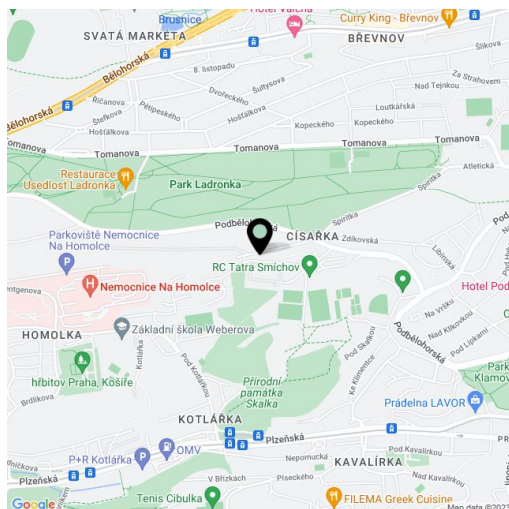
58 m², Prague 5, Smíchov, Na Císařce

Total area	68 m²
Floor area*	58 m²
Terrace	10 m²
Parking	Garage parking at CZK 2000/month.
Garage	Yes
Cellar	-
PENB	G
Reference number	36841
Available from	Immediately

Boasting a 10 m² terrace and beautiful views of Prague and the green neighborhood, this is an unfurnished 1-bedroom apartment on the 4th floor in the modern Císařka Residence project with a lift, a 24/7 reception and manned security, camera surveillance system and a private children's playground. Located in a quiet green neighborhood close to the Skalka natural park, the popular Ladronka Park with biking and in-line skating trails, and the Hvězda Park. Area with quick access to the city center and regular bus connections - the closest metro stations are Motol and Anděl.

The interior features a living room with a fully fitted open plan kitchen, a breakfast bar and **terrace** access, a bedroom with built-in wardrobes, a bathroom including a bathtub and a toilet, a utility / storage room, and a spacious entrance hall.

Floating floors, tiles, security entry door, large windows, central gas heating, awning on the terrace, washing machine, dishwasher, alarm. The apartment can be furnished at a higher rent. On-site **garage parking**: CZK 2000/month. Deposit for service charges, water and heating: CZK 5300/month. Electricity is billed separately.



* Area of the unit according to the Civil Code. The area consists of the sum total area of the entire unit bounded by perimeter walls.