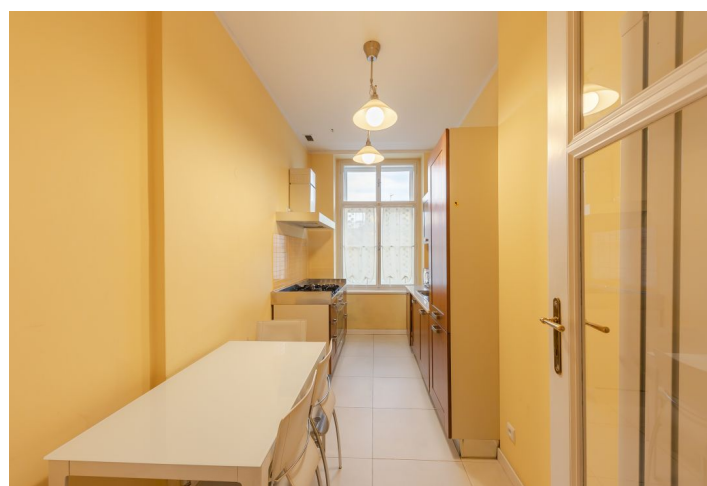
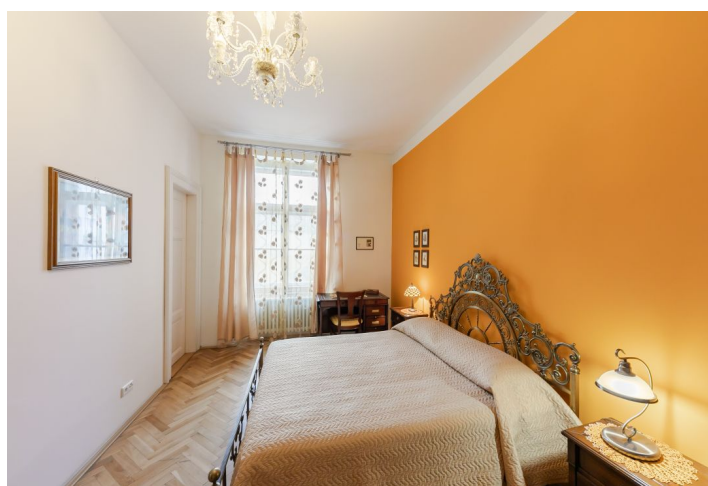




Apartment Two-bedroom (3+1)

Rented

106 m², Prague 1, Nové Město, Olivová





Apartment Two-bedroom (3+1)

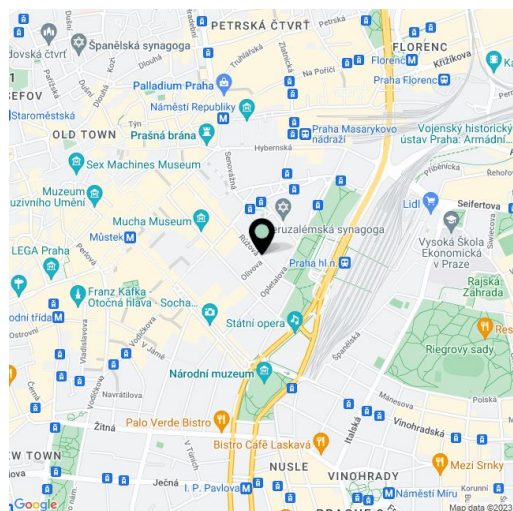
Rented106 m², Prague 1, Nové Město, Olivová

Total area	106 m ²
Parking	-
Cellar	Yes
PENB	G
Reference number	36829
Available from	Immediately

This is a fully furnished 2-bedroom 2-bathroom apartment on the third floor of a completely renovated building with a new lift. Situated on a quiet street just a few steps from the Main Train Station and a few blocks from Wenceslas Square with all three Prague metro lines, within easy reach of full amenities and services. Great central location for people who enjoy city life and the convenience of being able to walk to just about everywhere.

The apartment includes a living room with a dining area, a fully fitted kitchen, two bedrooms, an en-suite bathroom (walk-in shower, toilet), a family bathroom (walk-in shower, bidet, toilet), a **walk-in closet**, and an entrance hall.

High ceilings, large windows, **solid wood parquet floors**, tiles, pieces of antique furniture, crystal chandeliers, gas boiler, dishwasher, microwave oven, TV, **storage room in the courtyard** of the building. Monthly deposit for service charges and water consumption approx. CZK 2000. Gas and electricity will be transferred to the tenant.



* Area of the unit according to the Civil Code. The area consists of the sum total area of the entire unit bounded by perimeter walls.