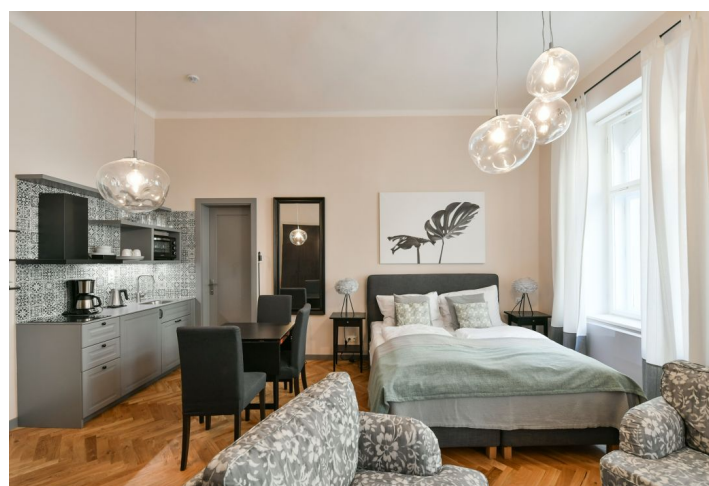




Apartment Studio (1+kk)

34 m², Prague 2, Vinohrady, Rybalkova

Rented





Apartment Studio (1+kk)

Rented

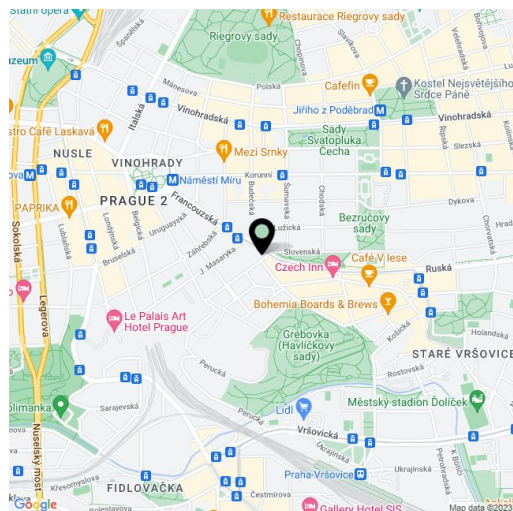
34 m², Prague 2, Vinohrady, Rybalkova

Total area	34 m²
Parking	-
Cellar	-
PENB	G
Reference number	36670
Available from	Immediately

Apartment near Havlíčkovy sady Park. This air-conditioned, fully furnished studio apartment is situated on the ground floor of a completely refurbished residential building with preserved original details, a new lift and a common landscaped garden with a pergola and a shared hot tub. The building sits on a quiet street in the popular residential neighborhood of Vinohrady just steps from a lovely park, with quick connections to the city center and full amenities within easy reach, and within walking distance of the Náměstí Míru metro station (line A).

The interior features a living room / bedroom, a fully fitted eat-in kitchen, a shower room, a separate toilet with a bidet shower, and an entrance hall.

Air-conditioning, solid wood parquet floors, ceramic tiling, security entry door, high ceilings, large windows, storage, central heating, dishwasher, basic kitchenware, iron and ironing board, TV, video entry phone, alarm, chip card entry. Deposit for service charges and water: CZK 1000/person/month. Heating and electricity are billed separately.



* Area of the unit according to the Civil Code. The area consists of the sum total area of the entire unit bounded by perimeter walls.