



Apartment One-bedroom (2+kk)

Ask for price

77 m², Prague 5, Malá Strana, Zborovská





Apartment One-bedroom (2+kk)

[Ask for price](#)

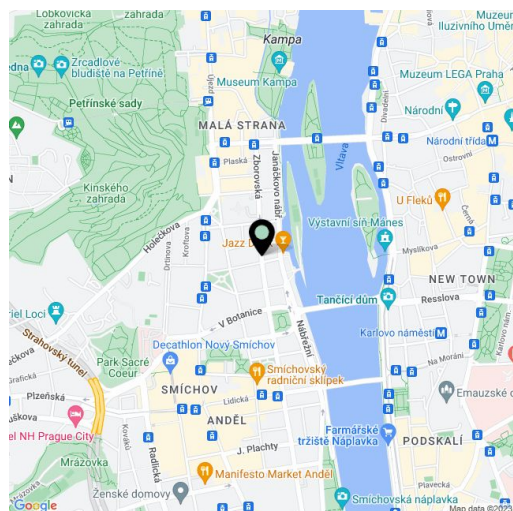
77 m², Prague 5, Malá Strana, Zborovská

Total area	77 m²
Parking	On-site garage parking.
Garage	Yes
Cellar	Yes
PENB	A
Reference number	36511
Available from	Immediately

High standard apartment with parking. This completely newly refurbished 1-bedroom apartment is situated on the first floor of a late 19th century apartment building that has undergone a meticulous renovation, benefiting from a 24/7 reception, security, camera system, a swimming pool, a sauna, a gym, underground parking, a lift and a landscaped courtyard garden. Centrally located just steps from the Vltava riverbank, within walking distance of the Kampa Island, Petřín Hill Park, Malá Strana (Lesser Town) and Old Town. The neighborhood has easy access to the Prague Castle, the Anděl commercial center and metro station, and the French School.

The interior features a living room with a dining space and a fully fitted open kitchen, one bedroom, a bathroom, and an entrance hall.

Smart home control and security system, quality equipment and finishes, **heat recovery ventilation**, **oak floors**, large format tiling, security entry door, built-in wardrobes, triple glazed windows, automatic roller blinds, gas boiler, washer, dryer, **SieMatic** kitchen with **Miele** appliances, induction cooktop, dishwasher, microwave oven, video entry phone, WiFi, **cellar**, chip entry, charging station for electric cars. A **garage parking** space is available at CZK 10,000/month + VAT. Deposit for service charges and water consumption: CZK 70/m²/month. Gas and electricity are billed separately.



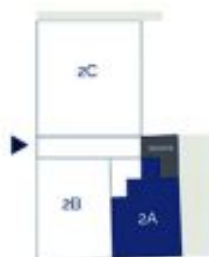
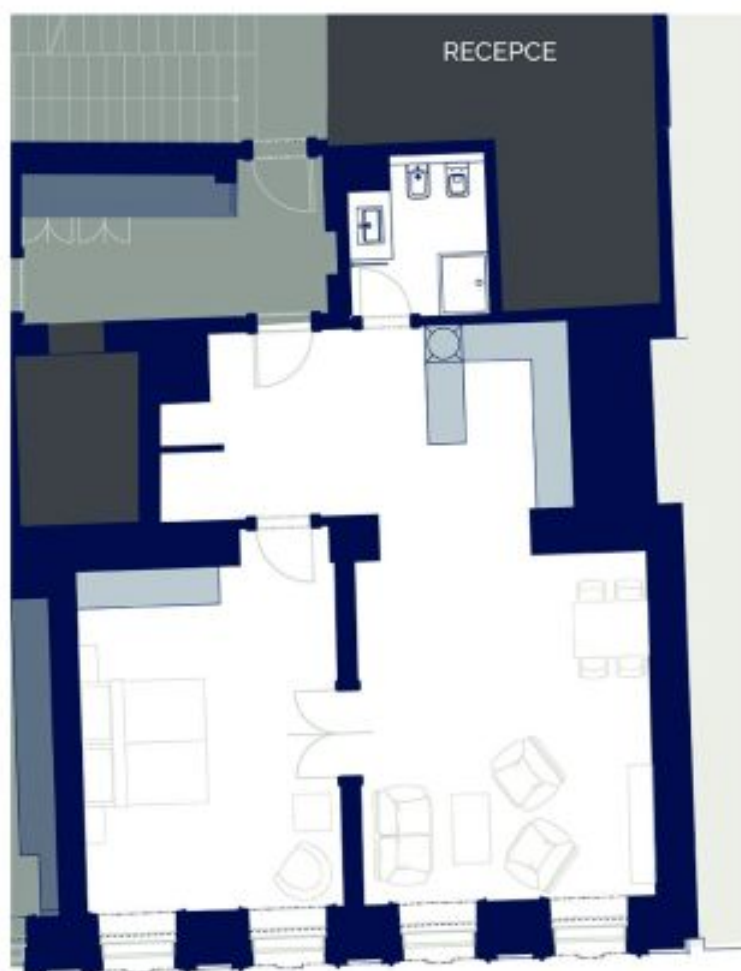
* Area of the unit according to the Civil Code. The area consists of the sum total area of the entire unit bounded by perimeter walls.



Apartment One-bedroom (2+kk)

Ask for price

77 m², Prague 5, Malá Strana, Zborovská



Celková výměra bytu	77 m ²
Vstupní hala	10 m ²
Kuchyňský kout	8 m ²
Technická místnost	2 m ²
Koupelna + WC	5 m ²
Ložnice	24 m ²
Obývací pokoj s jídelnou	27 m ²
Šatna	1 m ²