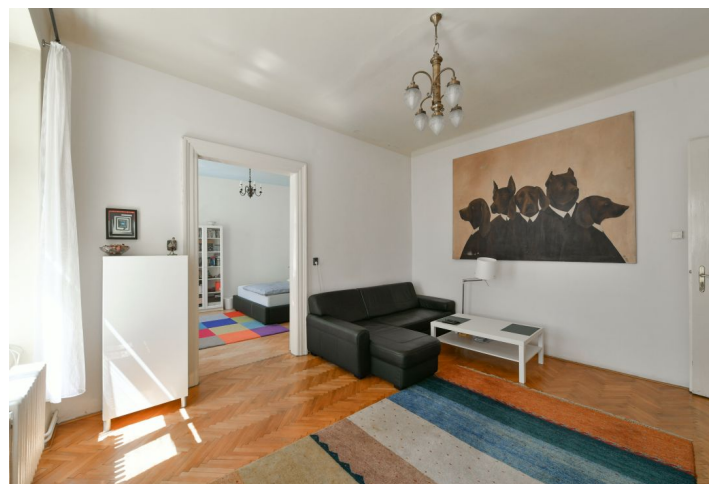




## Apartment Two-bedroom (3+1)

70 m², Prague 1, Staré Město, Masná

**Sold**





## Apartment Two-bedroom (3+1)

**Sold**

70 m², Prague 1, Staré Město, Masná

Total area	70 m²
Parking	-
Cellar	Yes
Service price	3 300 CZK monthly
PENB	G
Reference number	36420

This apartment with preserved original craft elements, high ceilings, and windows facing the courtyard is part of a Baroque building with a distinctively decorated facade located in an area with an impressive genius loci. Literally only a few steps lead to the Týn Church and Old Town Square, yet the building stands away from the main tourist routes.

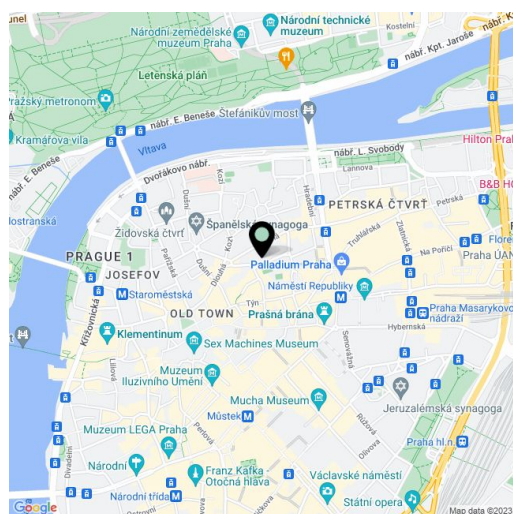
The clear layout of the apartment on the 2nd floor consists of a living room, 2 bedrooms, a kitchen, a bathroom, and a vestibule. All windows face **southeast** towards the courtyard.

Facilities include **original parquet floors**, **casement windows** and wooden doors, a complete kitchen unit, and sanitary ware. 3.7 m. ceiling height. The interior has been reconstruction (in 2010). Heating is by a gas boiler. The unit comes with a cellar. The building has a renovated historic facade and roof; preparations are underway for the reconstruction of the common areas, which will include the installation of a **new elevator**.

This historic district, in addition to many restaurants with cuisines from around the world, also offers cafes, galleries, and all the necessary services: supermarkets and other shops, schools from kindergartens to high schools, a post office, pharmacies, and banks. You can walk to the Old Town Astronomical Clock, the **Ungelt** Theater, the Celetná Theater, and the Dlouhá Theater, or the U Salvátora and Church of the Holy Spirit **famous Prague churches**.

Interior 70 m².

\* Area of the unit according to the Civil Code. The area consists of the sum total area of the entire unit bounded by perimeter walls.





## Apartment Two-bedroom (3+1)

Sold

70 m², Prague 1, Staré Město, Masná

