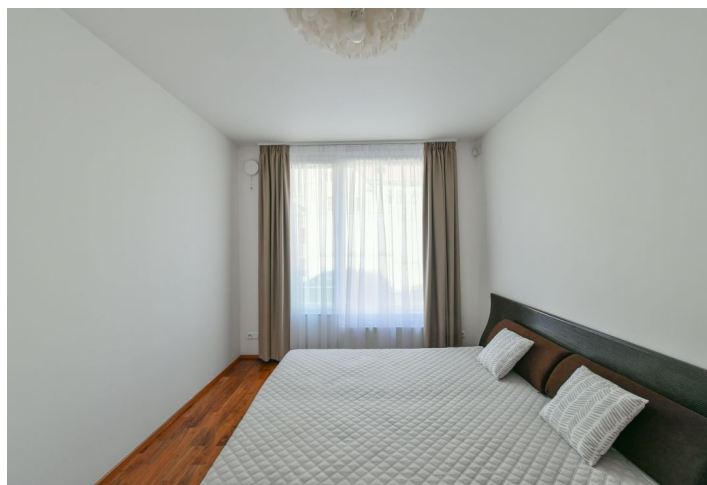
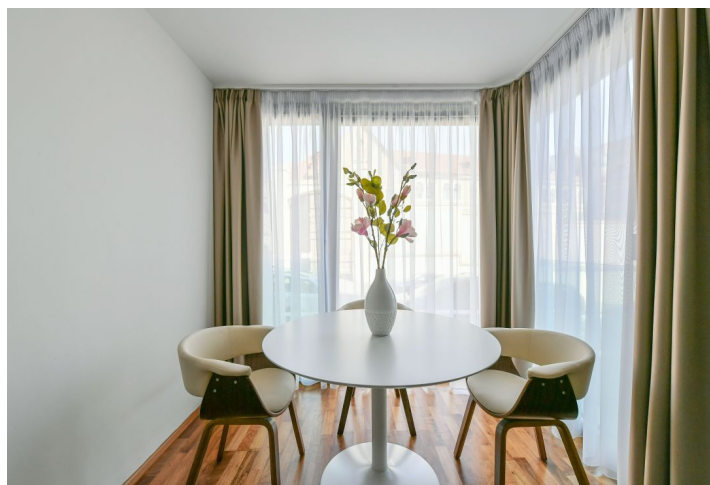
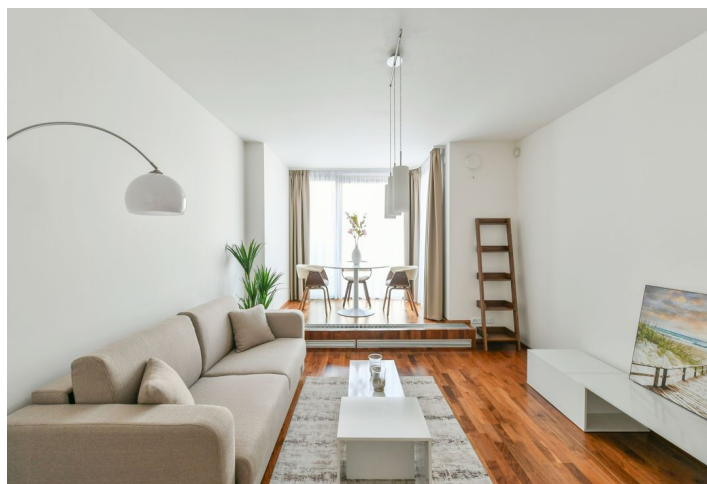




Apartment One-bedroom (2+kk)

Sold

55 m², Prague 5, Smíchov, Švédská





Apartment One-bedroom (2+kk)

Sold

55 m², Prague 5, Smíchov, Švédská

Total area	55 m²
Parking	1 garage parking space
Garage	Yes
Cellar	Yes
Service price	4 000 CZK monthly
PENB	G
Reference number	36349

This modern apartment overlooking the former monastery of St. Gabriela is located on the ground floor of the secure **Sacre Coeur Residence** with a reception and underground parking, set in an attractive residential area of **Na Hřebenkách** surrounded by greenery and within walking distance of the **Anděl** pedestrian zone in Smíchov.

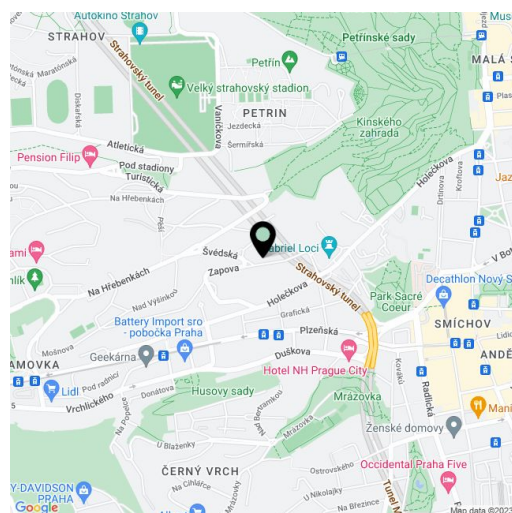
The layout consists of a living room with a kitchen and a sunny **bay window**, a bedroom, a dressing room, a bathroom with a bathtub, a separate toilet, and a hallway with built-in wardrobes.

Facilities include **wooden floors** and tiles, floor convectors, large-format windows, a security entrance door, and an intercom. Heating is from the central boiler room. The apartment is offered with **all the pictured interior equipment**. The offer price also includes one **garage parking space** and a **cellar** close to the entrance to the building. The residence offers a 24-hour reception, a **garden** with a children's playground in the courtyard, an underground garage, and a CCTV security system.

The location on the border of Prague 5 and 6 boasts an abundance of greenery. In the immediate vicinity is the **Sacré Coeur Park**, through which you can easily walk to the large shopping and entertainment center and the metro station at Anděl. Just a few steps away are the **Kinský and Petřínké Sady Gardens**. There is a grocery store or elementary school nearby, and other amenities are within easy reach. There is a bus stop nearby with quick and direct connections to the city center - the ride to Charles Square takes 7 minutes. Driving by car is made easy by the nearby entrance to the Strahov Tunnel and Mrázovka.

Interior 55 m², cellar 6 m².

* Area of the unit according to the Civil Code. The area consists of the sum total area of the entire unit bounded by perimeter walls.





Apartment One-bedroom (2+kk)

55 m², Prague 5, Smíchov, Švédská

Sold

