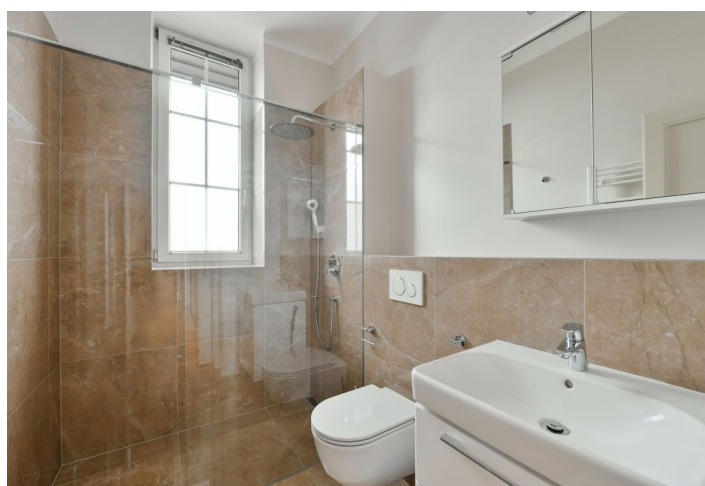




House Four-bedroom (5+kk)

Rented

259 m², Prague 6, Střešovice, Lomená





House Four-bedroom (5+kk)

Rented

259 m², Prague 6, Střešovice, Lomená

Total area	259 m²
Plot	387 m²
Foot print	122 m²
Garden	265 m²
Floor area	222 m²
Terrace	37 m²
Parking	Garage.
Garage	Yes
Cellar	Yes
Service price	Utilities are billed separately.
PENB	G
Reference number	36308
Available from	Immediately

Charming townhouse with an infrared sauna and well-maintained garden in a unique location. Boasting a prestigious address, this completely newly refurbished home is situated in the heart of the exclusive Ořechovka neighborhood with mature trees, parks, and distinguished villas. A location with quick access to the city center, the Prague Castle, international schools, and the airport, within easy reach of the Dejvická and Hradčanská metro stations with full amenities nearby. A traditional residential area with a long history, providing residents with peace and privacy. A tram stop is located a few minutes from the house.

The ground floor includes a living room with a dining area, a fully fitted kitchen and French windows leading to the **terrace** and **garden**, a toilet, and an entrance hall with built-in wardrobes and storage. The first floor offers two bedrooms, an en-suite bathroom (walk-in shower, toilet), and a family bathroom (bathtub, toilet). The attic floor features a hall/study, 2 bedrooms, a bathroom (walk-in shower), and a toilet. There is a basement floor with a laundry room, an **infrared sauna**, a gym, a bathroom (walk-in shower, toilet), and storage.

Preserved original details incl. period lighting fixtures, **air-conditioning**, **hardwood parquet floors**, original wooden stairs, tiles, built-in wardrobes in all bedrooms, gas boiler, blinds, washer, dryer, dishwasher, microwave oven, video entry phone, alarm, PC network. A **garage** is available.

