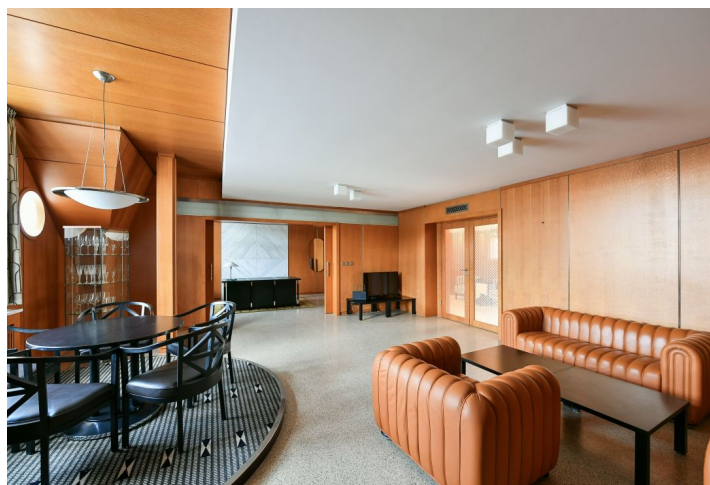




Apartment Three-bedroom (4+1)

Rented

158 m², Prague 1, Staré Město, Smetanovo nábřeží





Apartment Three-bedroom (4+1)

Rented

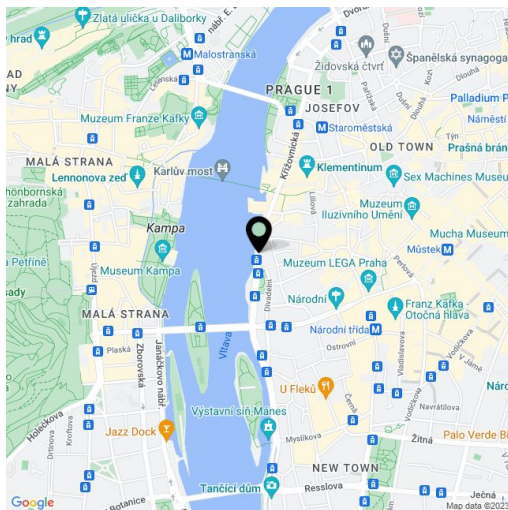
158 m², Prague 1, Staré Město, Smetanovo nábřeží

Total area	158 m²
Parking	-
Cellar	Yes
Service price	Service charges and utilities in the amount of CZK 12,000/month are billed separately.
PENB	G
Reference number	36200
Available from	Immediately

Unique apartment with views of the Vltava River, Petřín Hill, and Prague Castle, in the historic center of Prague. This renovated furnished attic apartment is situated on the 5th floor of a historic building on the Vltava riverbank mere steps from the Charles Bridge. An attractive location near the National Theater, Old Town Square, the Žofín and Kampa islands, moments from a tram stop, and a few min. walk from the Staroměstská metro station. Full amenities are available within immediate reach including quality restaurants, cafes, bars, clubs, cultural venues, and more.

The interior features a living room with a dining area, an adjacent office separated by sliding doors, a fully fitted kitchen, two bedrooms with built-in wardrobes, a windowed bathroom including a shower, a toilet and utility cupboard, plus a storage room and an entrance hall with built-in wardrobes.

Air-conditioning, marble tiling and window sills, poured concrete flooring, wooden interior doors, security entry door, gas boiler, blinds, washing machine, Miele kitchen appliances, dishwasher, combination oven, American type fridge, kitchenware, alarm, cellar.



* Area of the unit according to the Civil Code. The area consists of the sum total area of the entire unit bounded by perimeter walls.