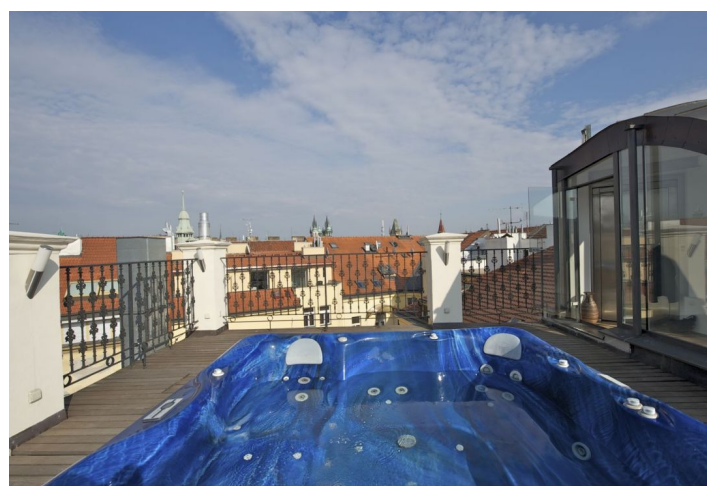
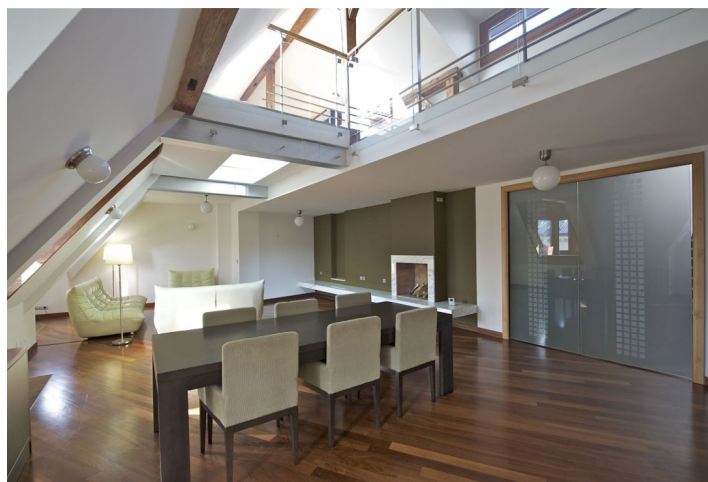




## Apartment Four-bedroom (5+1)

Rented

138 m<sup>2</sup>, Prague 1, Staré Město, Křižovnická





# Apartment Four-bedroom (5+1)

Rented

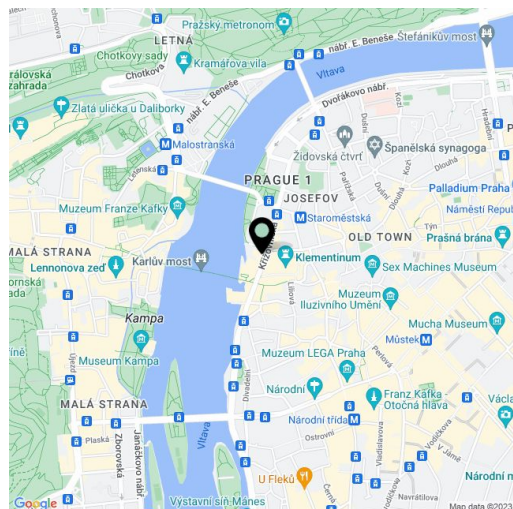
138 m², Prague 1, Staré Město, Křižovnická

Total area	220 m²
Floor area*	138 m²
Terrace	82 m²
Parking	Parking possible at Rudolfinum garages.
Cellar	-
PENB	G
Reference number	3607
Available from	Immediately

Exclusive fully furnished 3-bedroom 2-bathroom maisonette attic flat with an 81 m² terrace and Jacuzzi for rent. This exclusive apartment has breathtaking views of the Prague Castle panorama and many historic monuments. Situated in a UNESCO listed building that has been renovated with utmost attention to detail.

The flat has three entrances, with lift going straight to the terrace level. With combination of modern design, quality materials and historic details, the flat has large living/dining room with fireplace, contemporary kitchen separated by a sliding door, and an upstairs family room/study with stairs leading to terrace.

Used materials: wood, marble, glass and steel. Built-in appliances, storage, one bathroom is en-suite, washer, flat screen TVs, video intercom, wonderful views. 5th and 6th floor. Sauna in the building. Common building charges and utilities CZK 18,500/month.



\* Area of the unit according to the Civil Code. The area consists of the sum total area of the entire unit bounded by perimeter walls.