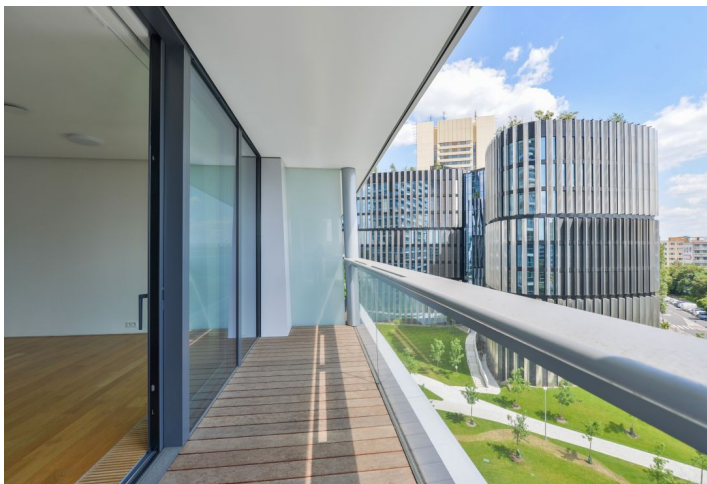




Apartment Studio (1+kk)

49.5 m², Prague 4, Krč, Milevská

Sold



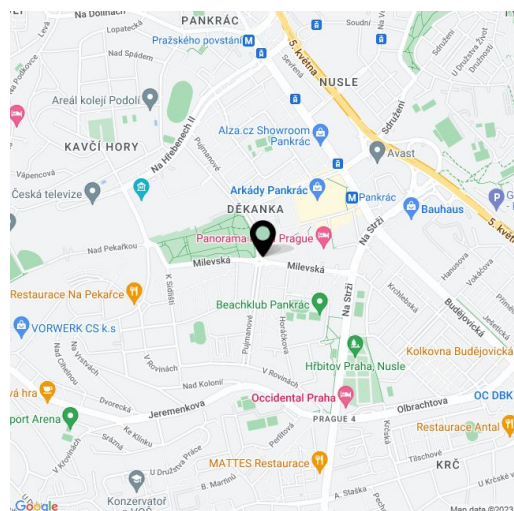


Apartment Studio (1+kk)

49.5 m², Prague 4, Krč, Milevská

Sold

Total area	62 m ²
Floor area*	50 m ²
Terrace	13 m ²
Parking	Lockable private garage
Garage	Yes
Cellar	-
Service price	4 700 CZK monthly
PENB	A
Reference number	35859



* Area of the unit according to the Civil Code. The area consists of the sum total area of the entire unit bounded by perimeter walls.

This apartment with a terrace and its own lockable garage is part of the iconic V Tower building, a unique residential project with services that are standard in the world's capital cities, with a private spa, wellness area, gym, or cinema prepared for the comfort of the residents. This new Prague landmark is set in the greenery on Pankrác Plain near a metro station.

Located on the 5th floor, it consists of an airy open space with a kitchen, dining, and relaxation area connected by a **glass wall with an east-facing terrace**. There is also an entrance hall, storage room, and bathroom with a partially separate toilet.

The **Poggenpohl Sedlak kitchen**, equipped with integrated **Siemens appliances** (electric oven with a grill, refrigerator with a freezer, dishwasher, washing machine with a dryer, induction hob, extractor hood), basket system, stone worktop, and glass tiling is ready for comfortable use. The floor is made of **quality wood**. The apartment is protected by a security system. The unit has a **closed garage** (with an electrical outlet and lighting), where you can park 1 large and 1 small car or up to 3 motorcycles.

The building was designed and implemented by a team of experts from around the world and uses renewable energy sources, only **non-hazardous materials**, gentle **cooling**, heating, and ventilation, intelligent management of electricity consumption, and a comprehensive water saving system. Residents have access to a wide range of high-level services, including a **24-hour reception** and technical management, a **spa and wellness area**, a **gym**, or a private cinema.

The unique, 104-meter-high V Tower building is **surrounded by a park** in an area that, thanks to its location and excellent accessibility, attracts a number of important Czech and international companies. In the immediate vicinity is the Arkády Pankrác shopping center, a **metro station**, the **large Central Park**, a wide selection of restaurants and cafes, and other high-level services.

Useable area 49.5 m², terrace 12.7 m², garage 13.9 m².



Apartment Studio (1+kk)

49.5 m², Prague 4, Krč, Milevská

Sold

