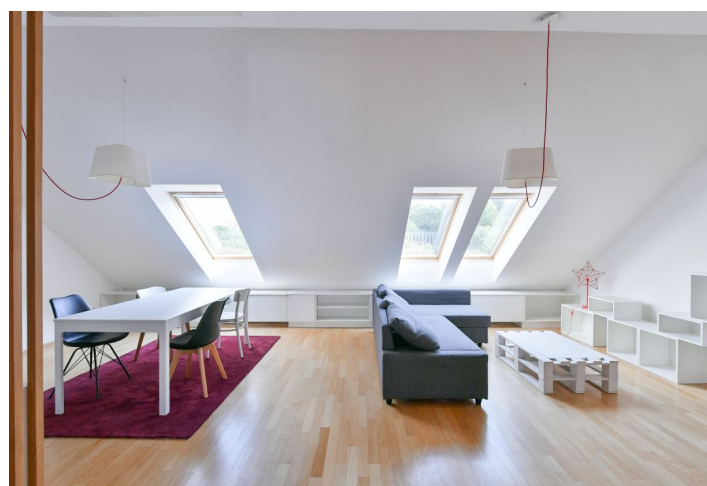




## Apartment Two-bedroom (3+kk)

Rented

120 m<sup>2</sup>, Prague 6, Břevnov, Za Strahovem





## Apartment Two-bedroom (3+kk)

Rented

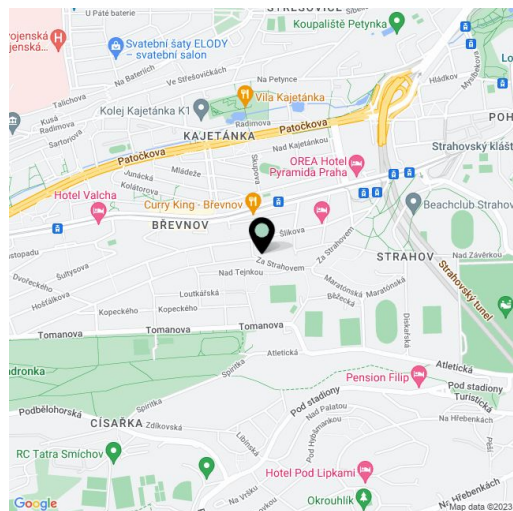
120 m², Prague 6, Břevnov, Za Strahovem

Total area	127 m²
Floor area*	120 m²
Terrace	7 m²
Parking	-
Cellar	-
PENB	G
Reference number	35650
Available from	Immediately

Contemporary apartment offering a terrace and beautiful views of Prague. This furnished 2-bedroom 2-bathroom split-level attic apartment is on the 4th floor of a well kept renovated residential building with a lift. Located in a quiet street in an attractive Břevnov area next to a park, in close vicinity of the Prague Castle, within easy reach of the Strahov stadium, the Petřín Hill and the popular Ladronka Park. Full amenities are available in close vicinity, plus quick access to the city center - bus and tram connections to metro, line A.

The lower floor includes a spacious **air-conditioned** living room with a fully fitted open plan kitchen, a dining area and green views, a bedroom with built-in wardrobes, a bathroom with a bathtub, a toilet, and an entrance hall with built-in wardrobes. The **terrace** is accessible from the hall and the bedroom. The upper floor offers a second bedroom with a **walk-in closet**, a storage room, and a shower room with a toilet.

**Solid wood parquet floors**, tiles, security entry door, gas boiler, dishwasher, video entry phone. Service charges and water bills: approx. CZK 2000/month. Gas and electricity are billed separately.



\* Area of the unit according to the Civil Code. The area consists of the sum total area of the entire unit bounded by perimeter walls.