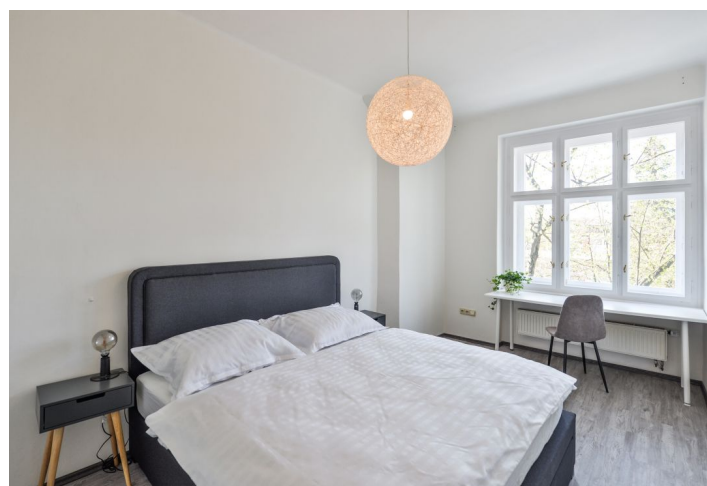




Apartment One-bedroom (2+kk)

Rented

51 m², Prague 6, Bubeneč, Rooseveltova





Apartment One-bedroom (2+kk)

Rented51 m², Prague 6, Bubeneč, Rooseveltova

Total area	51 m ²
Parking	-
Cellar	Yes
PENB	G
Reference number	35644
Available from	Immediately

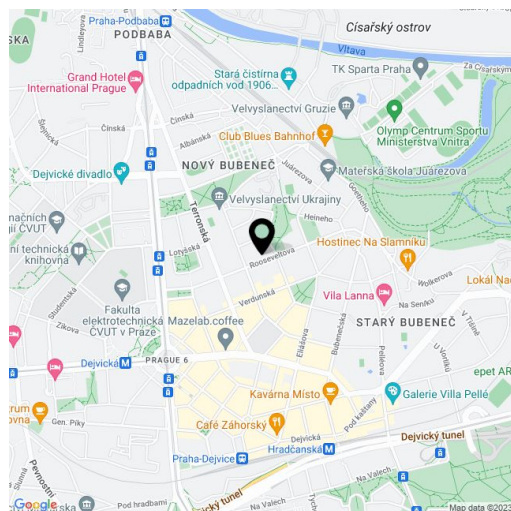
Fully furnished renovated 1-bedroom apartment on the first floor of a well maintained traditional building with a beautifully landscaped courtyard garden. Situated on a quiet street in the Prague 6 embassy quarter with full amenities in close vicinity and very quick access to the city center, the airport, and international schools. Conveniently located within walking distance of Stromovka Park, and a few min. walk from the Dejvická and Hradčanská metro stations.

The apartment offers a living room with a dining area, a bedroom with a study area, an entrance hall with a fully fitted kitchen, a bathroom with a bathtub and toilet, and a **walk-in closet**.

Preserved original details, high ceilings, large windows, **hardwood parquet floors**, vinyl and laminated floors, electric heating, washing machine, dishwasher, microwave oven, UPC connection, **cellar**. No elevator. Tenants can use the landscaped courtyard **garden** that is used exclusively by the residents of the building. Deposit for service charges and water: CZK 50

In addition to regular property viewings, we also offer **real time video viewings** via WhatsApp, FaceTime, Messenger, Skype, and other apps.

0/month for one person. Electricity is billed separately.



* Area of the unit according to the Civil Code. The area consists of the sum total area of the entire unit bounded by perimeter walls.