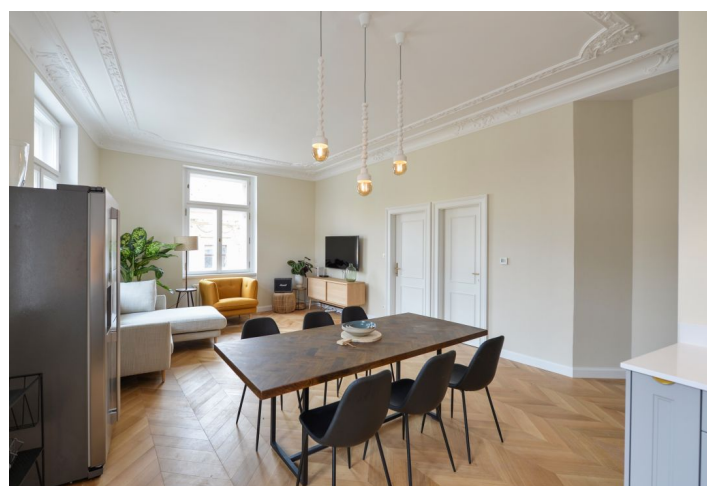
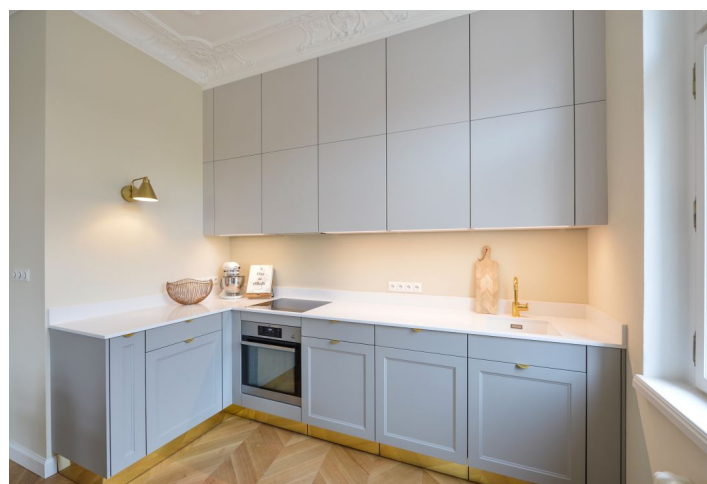




Apartment Two-bedroom (3+kk)

Rented

91 m², Prague 7, Holešovice, Veverkova





Apartment Two-bedroom (3+kk)

Rented

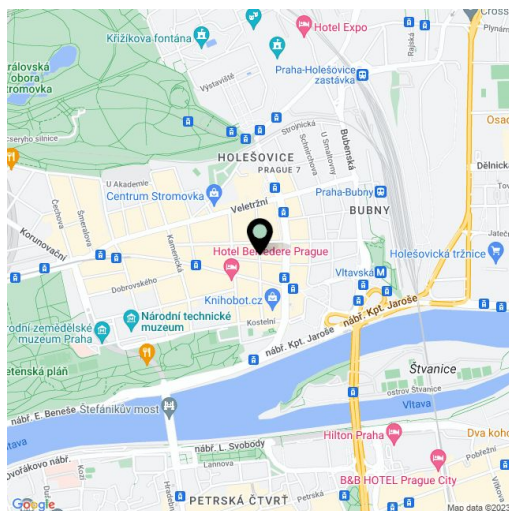
91 m², Prague 7, Holešovice, Veverkova

| | |
|------------------|-------------|
| Total area | 91 m² |
| Parking | - |
| Cellar | Yes |
| PENB | G |
| Reference number | 35402 |
| Available from | Immediately |

Boasting a sought after location, this newly refurbished and furnished 2-bedroom 2-bathroom apartment is on the third floor of a completely newly refurbished residential building with a lift and preserved Art Nouveau stucco. Well located within walking distance of two popular Prague parks - Stromovka and Letná. Trendy area with full amenities, numerous restaurants, bistros and cafes, moments from a tram stop with quick connections to the city center and Hradčanská and Vltavská metro stations. Popular residential location within easy reach of the airport and international schools in Prague 6.

The bright, airy interior features a comfortable corner living room with a fully fitted open plan kitchen, an adjacent bedroom with an en-suite bathroom (bathtub, toilet), a separate bedroom with an en-suite bathroom (walk-in shower, bidet, toilet), a utility room, and an open entrance hall.

Designer furnishings, solid wood parquet floors, tiles, stucco ornaments, gas boiler, AEG washing machine combined with dryer, dishwasher, induction cooktop, TV, **cellar**. Monthly deposit for service charges and utilities are billed separately.



* Area of the unit according to the Civil Code. The area consists of the sum total area of the entire unit bounded by perimeter walls.