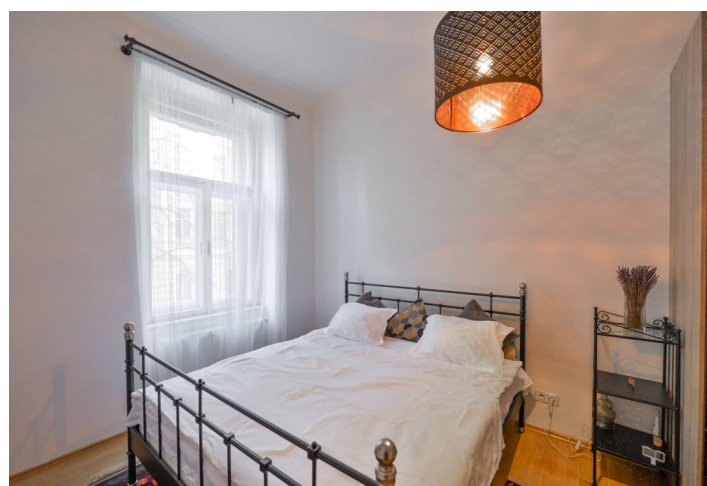




## Apartment One-bedroom (2+kk)

Rented

80 m<sup>2</sup>, Prague 2, Vinohrady, Na Kozačce





## Apartment One-bedroom (2+kk)

Rented

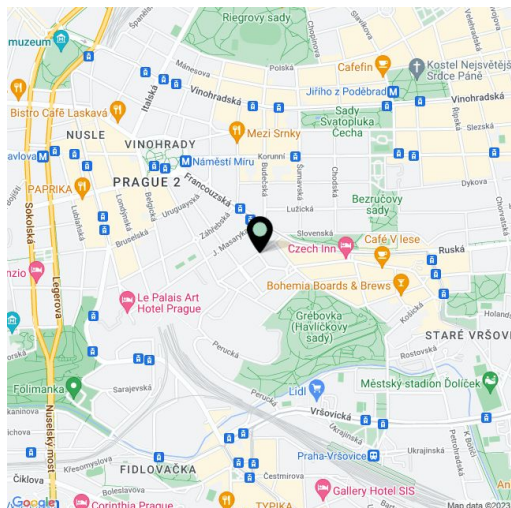
80 m², Prague 2, Vinohrady, Na Kozačce

Total area	80 m²
Parking	-
Cellar	-
Service price	Deposit for building charges and water CZK 1,250/person/month. Gas and electricity - transferred to the tenant.
PENB	E
Reference number	35291
Available from	Immediately

Benefiting from close proximity to Havlíčkovy Sady Park, this renovated, fully furnished apartment with preserved original features is on the upper ground floor of a 1938 residential building. Nicely located on a quiet street in a highly sought-after Vinohrady residential neighborhood, with full amenities within easy reach and excellent connections to the city center, one short tram stop to the Náměstí Míru metro station (line A).

The bright southeast-facing corner apartment consists of a living room with a fully fitted open plan kitchen and breakfast bar, a bedroom, a bathroom with a **hydromassage bathtub**, a separate toilet, and an entrance hall.

**Hardwood parquet floors**, Italian tiles, underfloor heating in the bathroom, **casement windows**, security entry door, double interior doors, built-in storage, gas boiler, dishwasher, microwave oven.



\* Size of the unit according to the Housing Act.  
The area consists of the sum total of the internal area of every room.