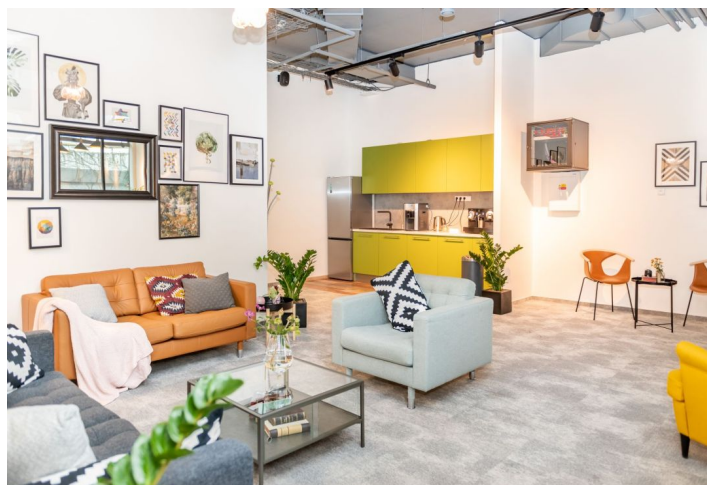




Office building

2 880 m², Prague 5, Stodůlky, Bucharova

Rented





Office building

2 880 m², Prague 5, Stodůlky, Bucharova

Rented

Total building area	2 880 m²
Tenant consumption	—
Parking	Yes
Parking service charges	—
Parking ratio	—
Certification	—
PENB	G
Reference number	35053

Flexible offices with stunning views in the business and administrative area of Prague 5 - Nové Butovice offer the possibility of renting a separate work desk as well as tailor-made corporate space.

The serviced offices provide **fully-equipped private offices** that are move-in ready, **corporate premises** with custom branding tailored to the tenant's needs, as well as coworking facilities in the form of **hot desks**. Tenants can use the fully equipped conference center on the ground floor of the building, a lounge and common areas, equipped kitchenette with snacks, and other services.

The offices are spread out over four floors of a building that is part of a complex of four modern office buildings. The complex is located in the middle of maintained green areas with park relaxation zones and so the offices have beautiful views of the greenery.

Location:

The building is easily accessible by car and public transport. It is located right next to the **Nové Butovice metro station (line B)**. Very good access to the Prague Ring Road and D5 highway, and the Vaclav Havel International Airport is 15 minutes away. There is a shopping gallery in the vicinity and all public amenities with shops, restaurants, and cafes.

Shared offices facilities and services:

Daily reception
 Equipped private offices
 Daily office
 Fully equipped conference center on the ground floor
 Equipped kitchen
 Copy center
 High-speed Wi-Fi

Equipment and building standards:

Central reception
 24-hour security service
 High-speed elevators
 Smart card access
 Raised floors
 Sprinklers
 Openable windows
 Parking in the underground garage
 Bicycle parking including showers
 Car wash and electric car charging station
 Greenery with relaxation zones within the complex
 Shopping gallery, bistro, restaurants, and cafes within the complex
 Rohlik Point cooled food dispenser

**Office building**

2 880 m², Prague 5, Stodůlky, Bucharova

Rented

Total building area	2 880 m²
Tenant consumption	—
Parking	Yes
Parking service charges	—
Parking ratio	—
Certification	—
PENB	G
Reference number	35053

Laundry services

Price list including services:**Coworking:**

Hot desk from CZK 575/day

Private offices:

Office for 2 people from CZK 8,000/month

Office for 4 people from CZK 16,000/month

Office for 8 people from CZK 24,000/month

Corporate premises with own branding from EUR 15,5/m².**Meeting rooms** and event space rental from CZK 575/hour.

Lease and service charges listed without VAT. Lessee pays no commission.



Office building

2 880 m², Prague 5, Stodůlky, Bucharova

Rented

