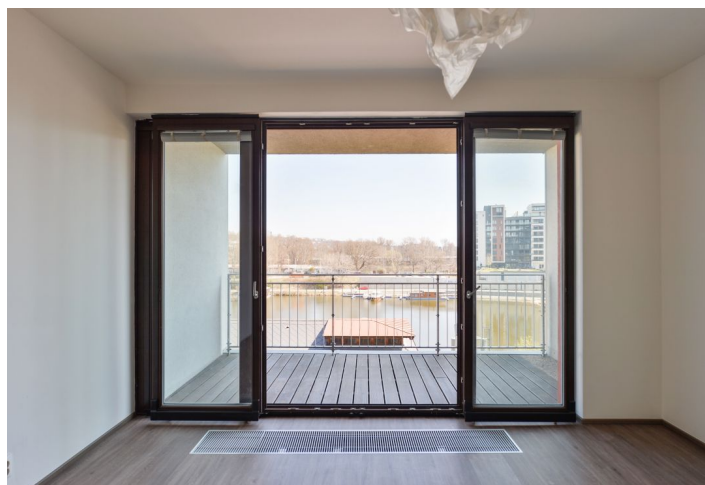




## Apartment Two-bedroom (3+kk)

Rented

91 m<sup>2</sup>, Prague 7, Holešovice, Jankovcova





## Apartment Two-bedroom (3+kk)

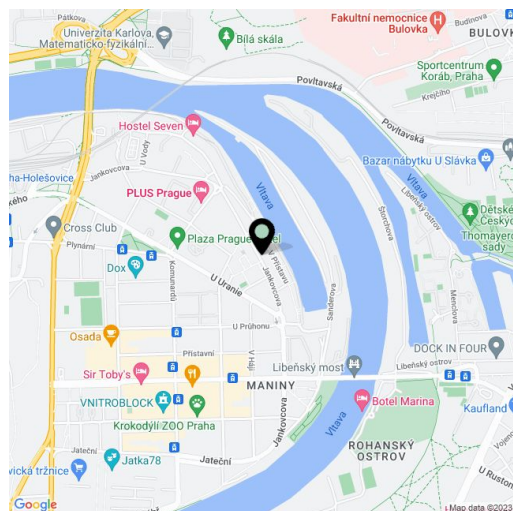
**Rented**91 m<sup>2</sup>, Prague 7, Holešovice, Jankovcova

Total area	100 m <sup>2</sup>
Floor area*	91 m <sup>2</sup>
Terrace	9 m <sup>2</sup>
Parking	One garage parking space.
Garage	Yes
Cellar	Yes
PENB	C
Reference number	35030
Available from	Immediately

Benefiting from direct views of the Vltava river, this is a modern unfurnished 2-bedroom apartment with a 9 m<sup>2</sup> terrace on the third floor of the PRAGUE MARINA residential project with a reception, security, CCTV cameras and underground parking. Located at the dead end of the Vltava river in Holešovice, Prague 7, with full amenities within easy reach and good connections to the city center. The Nádraží Holešovice, Palmovka and Vltavská metro stations are a few tram stops away, and the DOX Center for Contemporary Art and the La Fabrika theater are close-by. There is a bike trail nearby and it takes about 25 min. by walk to the city center.

The apartment features a living room with a dining area, a fully fitted open plan kitchen and **terrace** access, two separate bedrooms, a bathroom including a walk-in shower, a bathtub and a toilet, an additional separate toilet, a utility / storage room, and an entrance hall.

**Wooden floating floors**, tiles, tropical wood on the terrace, security entry door, French windows, blinds, central heating, washing machine, dishwasher, TV, garden furniture, video entry phone, **cellar**. A **garage parking** space is included. Service charges, water and heating deposit: approx. CZK 4300/month for 2 persons. Electricity is billed separately.



\* Area of the unit according to the Civil Code. The area consists of the sum total area of the entire unit bounded by perimeter walls.