



Apartment Two-bedroom (3+kk)

Sold

73.5 m², Prague 8, Kobylisy, Vršní





Apartment Two-bedroom (3+kk)

Sold73.5 m², Prague 8, Kobylisy, Vršní

| | |
|------------------|--------------------|
| Total area | 105 m ² |
| Floor area* | 74 m ² |
| Terrace | 31 m ² |
| Loggia | 5 m ² |
| Parking | Yes |
| Garage | Yes |
| Cellar | Yes |
| PENB | C |
| Reference number | 34660 |

This apartment with two terraces and a loggia is located on the 4th floor of a new building perched high above the center of Prague and the Vltava River, in the popular Kobylisy neighborhood with perfect transport links, a full range of services, and plenty of greenery. Completion is scheduled for the end of this year.

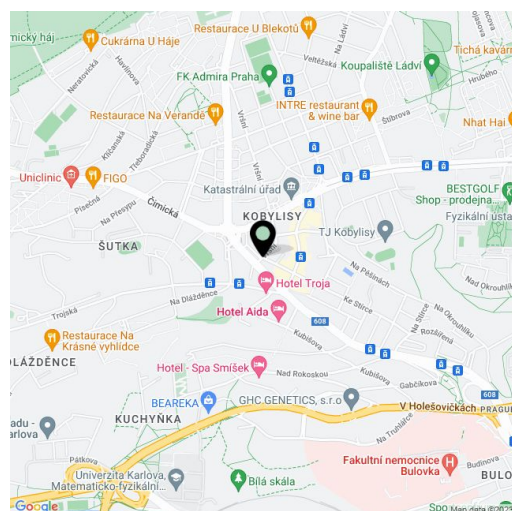
The layout consists of a main living space with a preparation for a kitchen and access to the terrace, a master bedroom with an en-suite bathroom (with a shower and toilet) and a loggia, and there is also a 2nd bedroom with a terrace. Both bedrooms face a quiet street with greenery. There is also a central bathroom (with a shower and toilet), a spacious entrance hall, and a closet.

The interior will be finished to an elegant standard, including vinyl flooring, ceramic bathroom and floor tiles, French windows with wooden and aluminum frames, brand-name sanitary ware, tropical wood on the terraces and balconies, and security entrance doors. The purchase price includes a cellar; there is a possibility to buy 1-2 parking spaces. Heating will be provided by a central gas boiler room in the building.

The building is located in a place just 3 stops away by metro or a few minutes by tram from the city center; there are public transport stops right by its doors. In the vicinity, there is a supermarket, the Kobylský Dvůr with a farmer's market and community events, several cafes and restaurants, lots of small shops, a bank, a pharmacy or a swimming pool, other services (clinic, kindergartens, elementary schools, sports hall). The surrounding area is full of landscaped green areas, the closest of which is the revitalized **Dlážděnká Park** and the **Okrouhlík** natural monument, as well as the large **Ďáblický háj** and **Drahaň-Troja nature parks** with many unique natural monuments.

Total area 73.5 m², terrace 21.1 and 10 m², loggia 4.8 m².

In addition to regular property viewings, we also offer **real time video viewings** via WhatsApp, FaceTime, Messenger, Skype, and other apps.



* Area of the unit according to the Civil Code. The area consists of the sum total area of the entire unit bounded by perimeter walls.

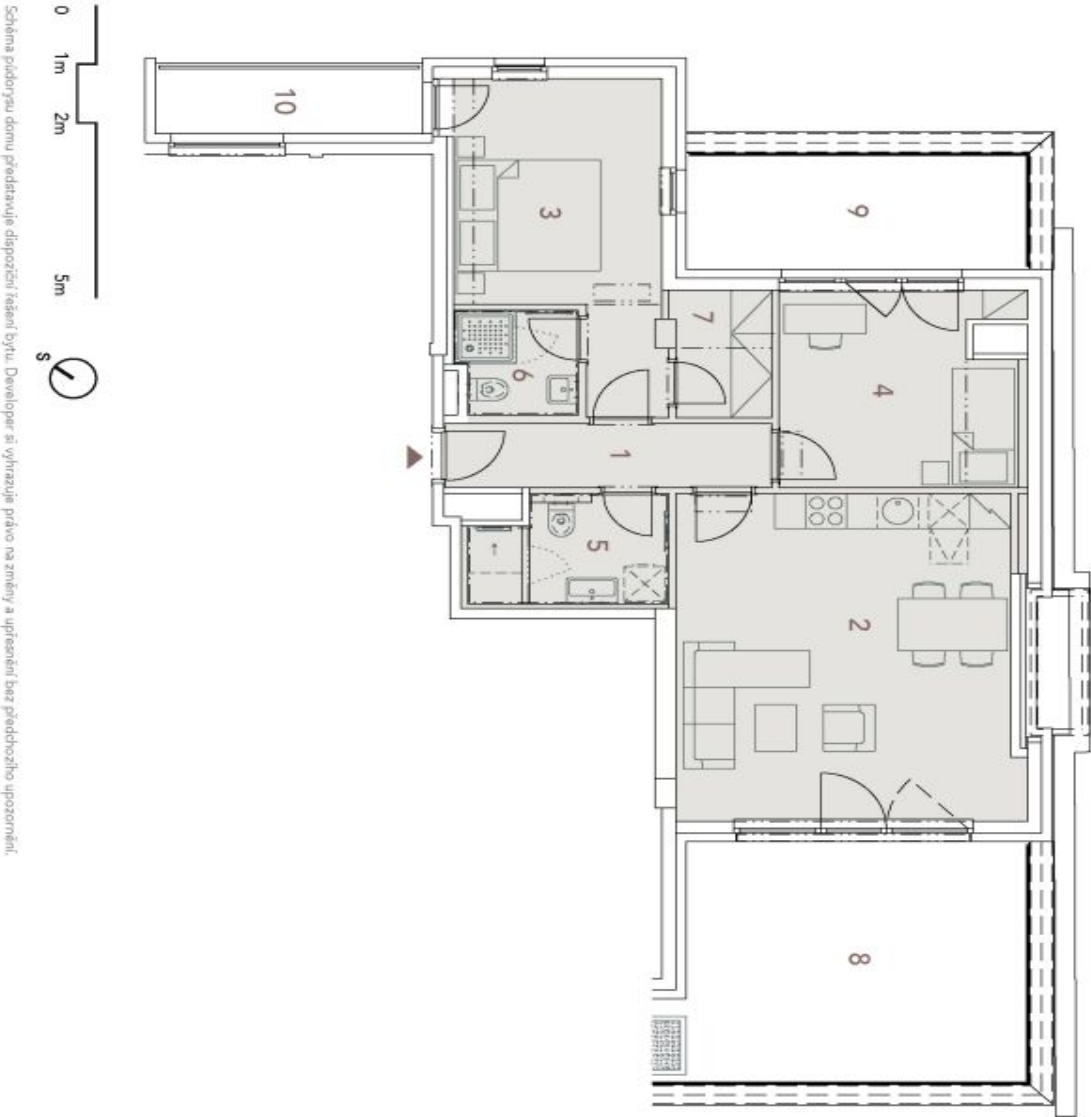


Apartment Two-bedroom (3+kk)

73.5 m², Prague 8, Kobylisy, Vršní

Sold

VILADŮM
VRŠNÍ



byt 51 | 3+kk | 73,50 m²

| č. | místnost | m² |
|------------------|--------------------|-------|
| 1 | chodba | 5,30 |
| 2 | obývací pokoj + KK | 27,90 |
| 3 | ložnice | 14,10 |
| 4 | ložnice | 11,40 |
| 5 | koupelna / WC | 5,00 |
| 6 | koupelna / WC | 3,10 |
| 7 | komora | 3,1 |
| užitná plocha | | 69,90 |
| podlahová plocha | | 73,50 |
| 8 | terasa | 21,10 |
| 9 | terasa | 10,00 |
| 10 | lodžie | 4,80 |

www.vrsni.com

svoboda&williams

CHRISTIE'S
INTERNATIONAL REAL ESTATE

Ekluzivní prodejce

Nla Petiškyne 2, 110 00 Praha 1

+420 257 328 281, +420 257 322 032

info@svoboda-williams.com