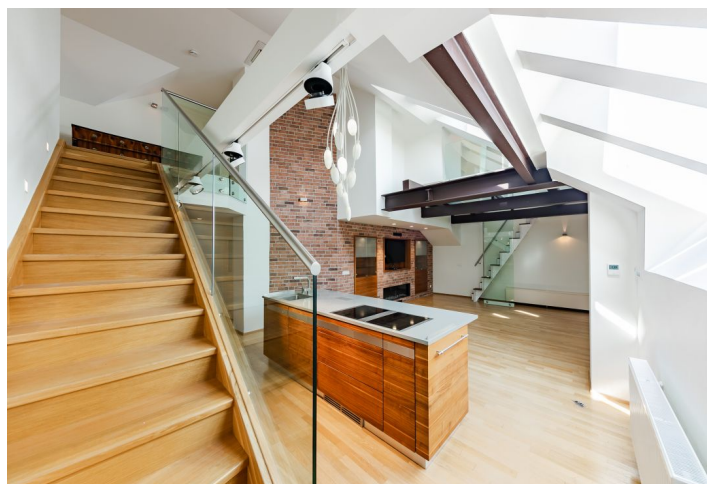
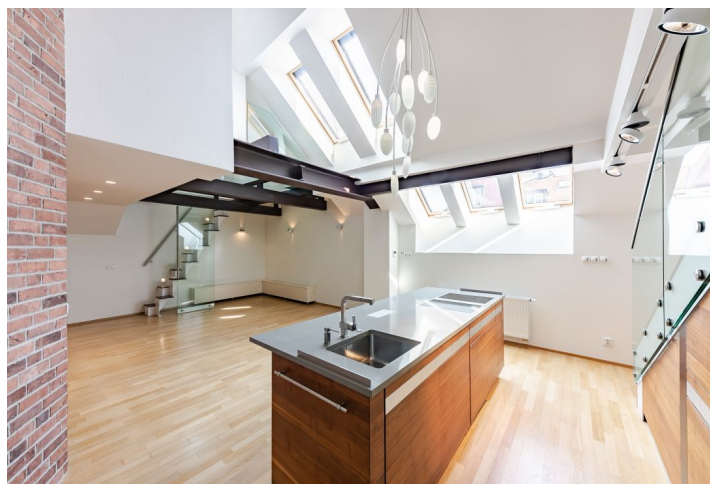




Apartment Six-bedroom (7+kk)

Rented

243 m², Prague 5, Smíchov, V Lesíčku





Apartment Six-bedroom (7+kk)

Rented

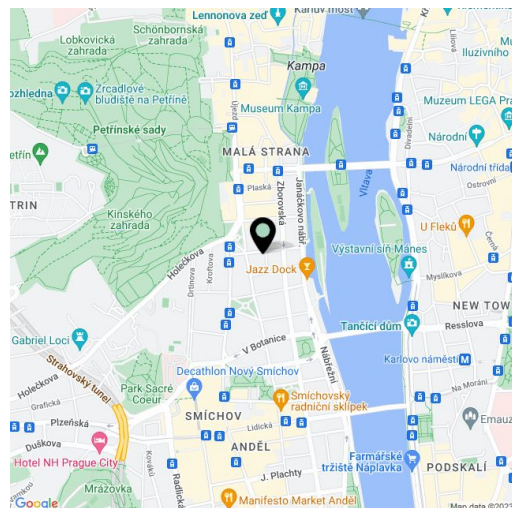
243 m², Prague 5, Smíchov, V Lesíčku

| | |
|------------------|--|
| Total area | 243 m² |
| Parking | Garage parking nearby is included. |
| Garage | Yes |
| Cellar | Yes |
| Service price | Deposit for services, water, and heating: CZK 8,000/month. Electricity is billed separately. |
| PENB | G |
| Reference number | 34584 |
| Available from | Immediately |

Top-standard air-conditioned penthouse for rent. This unfurnished 4-5-bedroom 4-bathroom split-level attic apartment with designer furnishings, a formal dining room ,and a glazed reading room with views of the St. Vitus Cathedral and Hunger Wall is situated on the 4th top floor of a completely refurbished century-old building with an elegant classical facade, transformed into a city residence. Located on a quiet street in close vicinity of the historic center of Prague, the Vltava embankment, Petřín Park, and Kinský Garden, near the Prague Castle and Charles Bridge. An area with a quick connection to the Nový Smíchov commercial and entertainment zone and Anděl metro station (6 min. to the city center).

The lower level of the apartment features a living room with a bio ethanol **fireplace**, a dining area, and a fully fitted top-of-the-line kitchen, a formal dining room, three bedrooms with built-in wardrobes and en-suite bathrooms (double shower with a **steam bath**/bathtub, toilet/shower, toilet), an additional guest toilet, a pantry, and an entrance hall with built-in wardrobes and storage. There is a staircase in the living room leading up to the **glazed library**. The upper floor includes a bedroom with built-in wardrobes and a **walk-in closet**, an office with views of Prague Castle, and a bathroom (shower, toilet).

Top-quality equipment and finishes, **hardwood parquet floors**, tiles, security entry door, **Rony Plesl light fixtures**, custom-made fitted wardrobes with built-in lights, electrically operable windows with electrical exterior blinds, washer, dryer, solid wood **Team 7 kitchen**, **Gutmann, Siemens - Studio Line** and **Liebherr** kitchen appliances, dishwasher, two wine fridges, two ovens, American double door fridge/freezer with an icemaker, central heating, Internet and cable TV connection (included), **cellar**, elevator. A **garage parking space** in the Nový Smíchov shopping mall is included (6-7 min. walk).



* Area of the unit according to the Civil Code. The area consists of the sum total area of the entire unit bounded by perimeter walls.



Apartment Six-bedroom (7+kk)

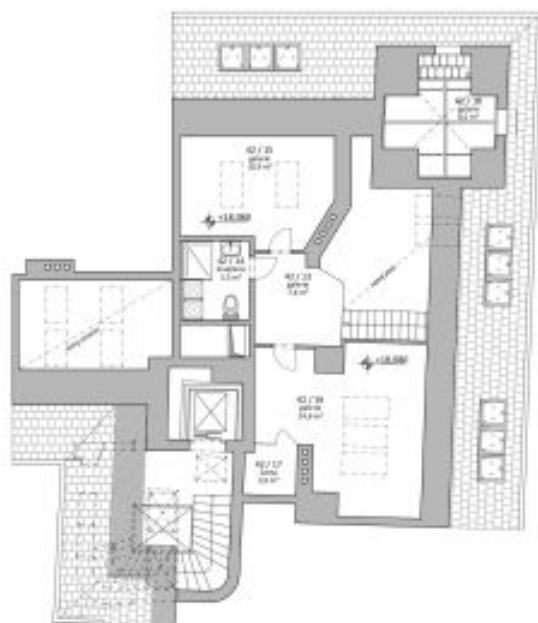
243 m², Prague 5, Smíchov, V Lesíčku

Rented



| MÝŠKA BUDOVNA | | | SPR | POS |
|----------------------|-------------------|-------|-----------|-------|
| 4201 | ložnice (bedroom) | 12,80 | 12,80 | 12,80 |
| 4202 | spn | 12,80 | 12,80 | 12,80 |
| 4203 | obývací | 12,80 | 12,80 | 12,80 |
| 4204 | obývací | 12,80 | 12,80 | 12,80 |
| 4205 | obývací | 12,80 | 12,80 | 12,80 |
| 4206 | obývací | 12,80 | 12,80 | 12,80 |
| 4207 | obývací | 12,80 | 12,80 | 12,80 |
| 4208 | obývací | 12,80 | 12,80 | 12,80 |
| 4209 | obývací | 12,80 | 12,80 | 12,80 |
| 4210 | obývací | 12,80 | 12,80 | 12,80 |
| 4211 | obývací | 12,80 | 12,80 | 12,80 |
| 4212 | obývací | 12,80 | 12,80 | 12,80 |
| 4213 | obývací | 12,80 | 12,80 | 12,80 |
| 4214 | obývací | 12,80 | 12,80 | 12,80 |
| 4215 | obývací | 12,80 | 12,80 | 12,80 |
| 4216 | obývací | 12,80 | 12,80 | 12,80 |
| 4217 | obývací | 12,80 | 12,80 | 12,80 |
| 4218 | obývací | 12,80 | 12,80 | 12,80 |
| 4219 | obývací | 12,80 | 12,80 | 12,80 |
| 4220 | obývací | 12,80 | 12,80 | 12,80 |
| CELKOVÁ PLOCHA 5. NP | | | 243,00 m² | |

5.NP



| MÝŠKA BUDOVNA | | | SPR | POS |
|----------------------|-------------------|-------|-----------|-------|
| 4301 | ložnice (bedroom) | 12,80 | 12,80 | 12,80 |
| 4302 | spn | 12,80 | 12,80 | 12,80 |
| 4303 | obývací | 12,80 | 12,80 | 12,80 |
| 4304 | obývací | 12,80 | 12,80 | 12,80 |
| 4305 | obývací | 12,80 | 12,80 | 12,80 |
| 4306 | obývací | 12,80 | 12,80 | 12,80 |
| 4307 | obývací | 12,80 | 12,80 | 12,80 |
| 4308 | obývací | 12,80 | 12,80 | 12,80 |
| 4309 | obývací | 12,80 | 12,80 | 12,80 |
| 4310 | obývací | 12,80 | 12,80 | 12,80 |
| 4311 | obývací | 12,80 | 12,80 | 12,80 |
| 4312 | obývací | 12,80 | 12,80 | 12,80 |
| 4313 | obývací | 12,80 | 12,80 | 12,80 |
| 4314 | obývací | 12,80 | 12,80 | 12,80 |
| 4315 | obývací | 12,80 | 12,80 | 12,80 |
| 4316 | obývací | 12,80 | 12,80 | 12,80 |
| 4317 | obývací | 12,80 | 12,80 | 12,80 |
| 4318 | obývací | 12,80 | 12,80 | 12,80 |
| 4319 | obývací | 12,80 | 12,80 | 12,80 |
| 4320 | obývací | 12,80 | 12,80 | 12,80 |
| CELKOVÁ PLOCHA 6. NP | | | 243,00 m² | |

6.NP

