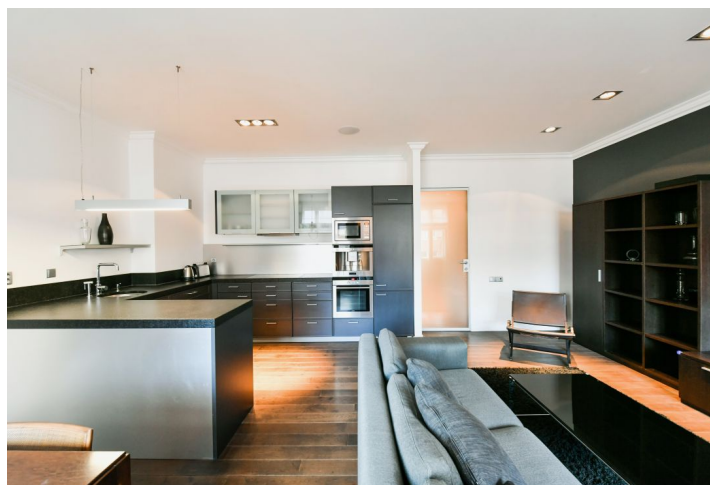




Apartment One-bedroom (2+kk)

Rented

65 m², Prague 3, Vinohrady, Lucemburská





Apartment One-bedroom (2+kk)

Rented

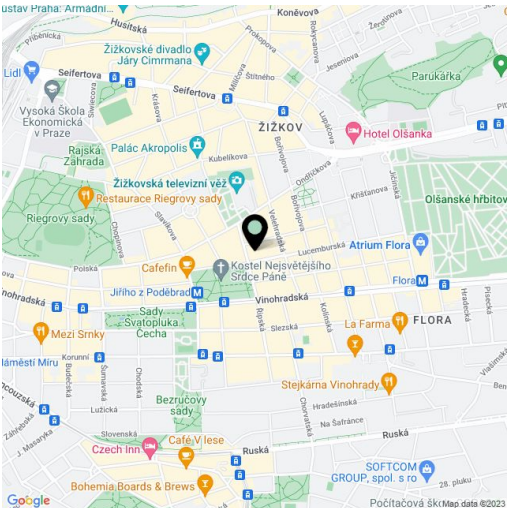
65 m², Prague 3, Vinohrady, Lucemburská

Total area	65 m²
Parking	-
Cellar	-
Service price	Service charges and water: CZK 2,000/person/month. Deposit for gas consumption CZK 2,500. Electricity will be transferred to the tenant.
PENB	G
Reference number	34332
Available from	Immediately

This elegant, completely refurbished and furnished, architect designed apartment is situated on the 3rd floor of a traditional building with an elevator. Located on a quiet tree-lined street on the border of Žižkov and Vinohrady, with convenient access to the city center and full amenities in the area. The Jiřího z Poděbrad Square and metro station, Flora metro station, and Atrium Flora shopping mall are a short walk away, and Parukářka Park and Riegrovy Sady Park are withing walking distance.

The interior features a living room with a fully integrated kitchen and dining area, a bedroom, a shower bathroom, a fitted **walk-in closet**, and an entrance hall.

Quality equipment and finishes, hardwood floors, tiles, ample storage, gas heating, washing machine, dishwasher, microwave oven, coffee maker, TV.



* Size of the unit according to the Housing Act.
The area consists of the sum total of the internal area of every room.