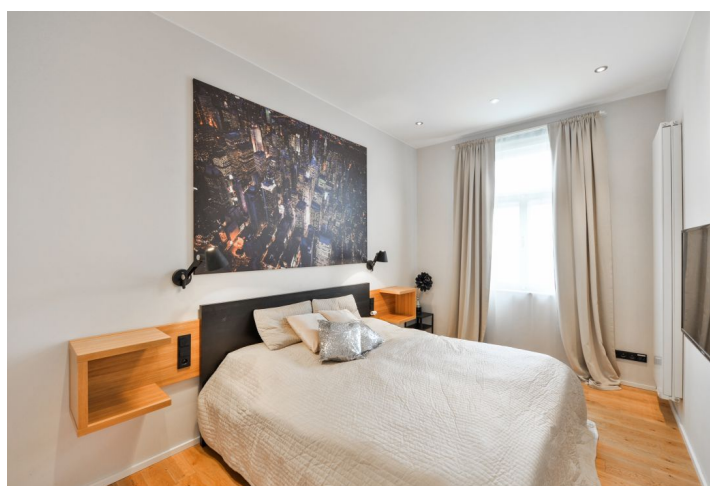




Apartment Two-bedroom (3+kk)

Rented

100 m², Prague 1, Nové Město, Petrské náměstí





Apartment Two-bedroom (3+kk)

Rented

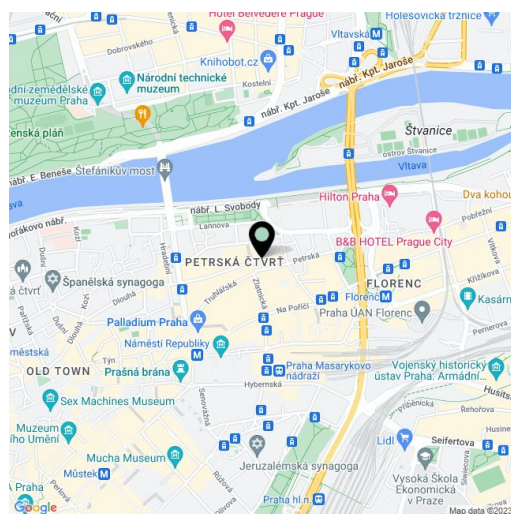
100 m², Prague 1, Nové Město, Petřské náměstí

Total area	100 m ²
Parking	-
Cellar	Yes
PENB	G
Reference number	34135
Available from	Immediately

This is a high standard, fully refurbished and furnished 2-bedroom apartment with views of the Petřské Square and the surrounding historic buildings, on the fourth floor of a richly decorated traditional residential building with a lift. Located right in the city center, within easy reach of restaurants, cafes, shops, and public transportation. Just a few min. walk to Náměstí republiky and Florenc metro stations, the Hilton Hotel, and the largest Czech shopping mall - Palladium. A swimming pool and a fitness center are just a short walk away, and the Štvanice tennis courts are close by.

The apartment features a living room with an **impressive fully fitted eat-in kitchen**, 2 bedrooms with built-in wardrobes, and a fitted **walk-in closet**. There is a bathroom including a bathtub, a separate toilet, a utility room, and an entrance hall with built-in wardrobes and storage.

Atypical custom made kitchen, wooden floors, tiles, large windows, security entry door, recessed lighting, blinds, central heating, washing machine, dishwasher, induction cooktop, microwave oven, TV, alarm, **cellar**, shared balcony in the corridor of the building. Service charges and water deposit: CZK 1245/month for two persons. Gas and electricity are billed separately (transfer to the tenant).



* Area of the unit according to the Civil Code. The area consists of the sum total area of the entire unit bounded by perimeter walls.