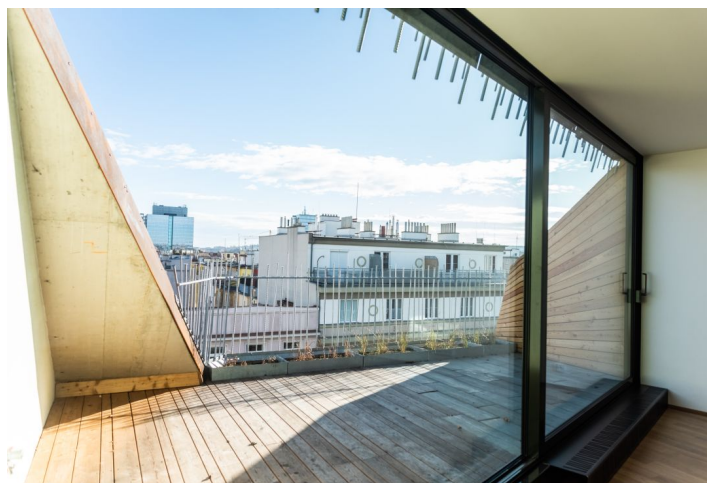
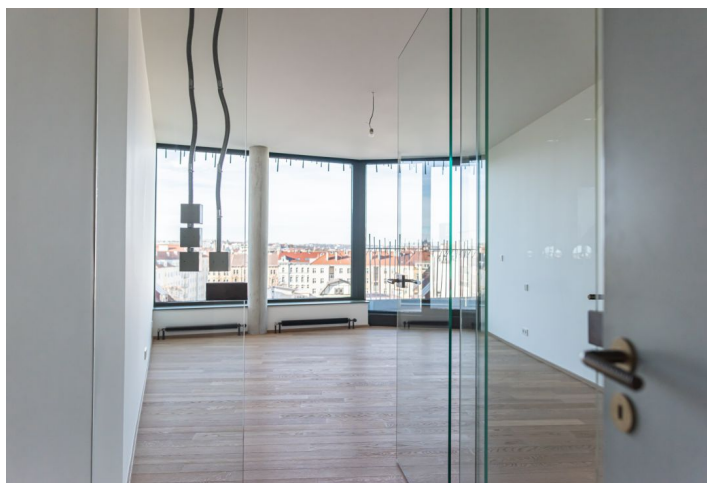




Apartment Three-bedroom (4+kk)

Sold

174 m², Prague 7, Holešovice





Apartment Three-bedroom (4+kk)

Sold174 m², Prague 7, Holešovice

Total area	229 m ²
Floor area*	174 m ²
Terrace	55 m ²
Parking	Parking space in the garage at extra cost
Garage	Yes
Cellar	Yes
PENB	C
Reference number	34100

* Area of the unit according to the Civil Code. The area consists of the sum total area of the entire unit bounded by perimeter walls.

New penthouse with 3 terraces situated on the highest (7th) floor of a top-of-the-line modern apartment building that has been built in a dynamically developing district with many trendy cafes, restaurants, shops, as well as kindergartens, schools, sports grounds, etc. The area has excellent transport accessibility.

The apartment consists of a generous living space with an open plan kitchen and access to the terrace, 3 bedrooms facing the courtyard with private bathrooms and dressing rooms; all bedrooms have access to 2 more terraces. There is also an entrance hall, a guest toilet, and a utility room with a connection for a washing machine.

Standard features include **double-layer oak floors**, **heated stone tiles** in the bathroom, **large-format aluminum windows** with insulated double-glazed panes and a preparation for exterior blinds, a security entry door (class 3) and interior doors with concealed hinges, telephone/Internet/TV sockets in both living rooms, an electronic entry system, a preparation for cooling, and a smart home system. Heating is provided by the building's central boiler. The apartment comes with a cellar at an extra cost and there is also the possibility to purchase a garage parking space.

Previously industrial Holešovice has now evolved into a modern district with a slightly bohemian atmosphere. Advantages of living here include its **convenient access to the city center** by tram and metro, its **full urban amenities** (grocery stores, bakeries, bistros, cafes, restaurants, pharmacies, and doctor's offices), as well as an art gallery, a library, multicultural center, and fitness centers. **A golf driving range** is nearby, as well as a popular **bike path along the Vltava River**.

Total floor area 174 m², terraces 55 m².

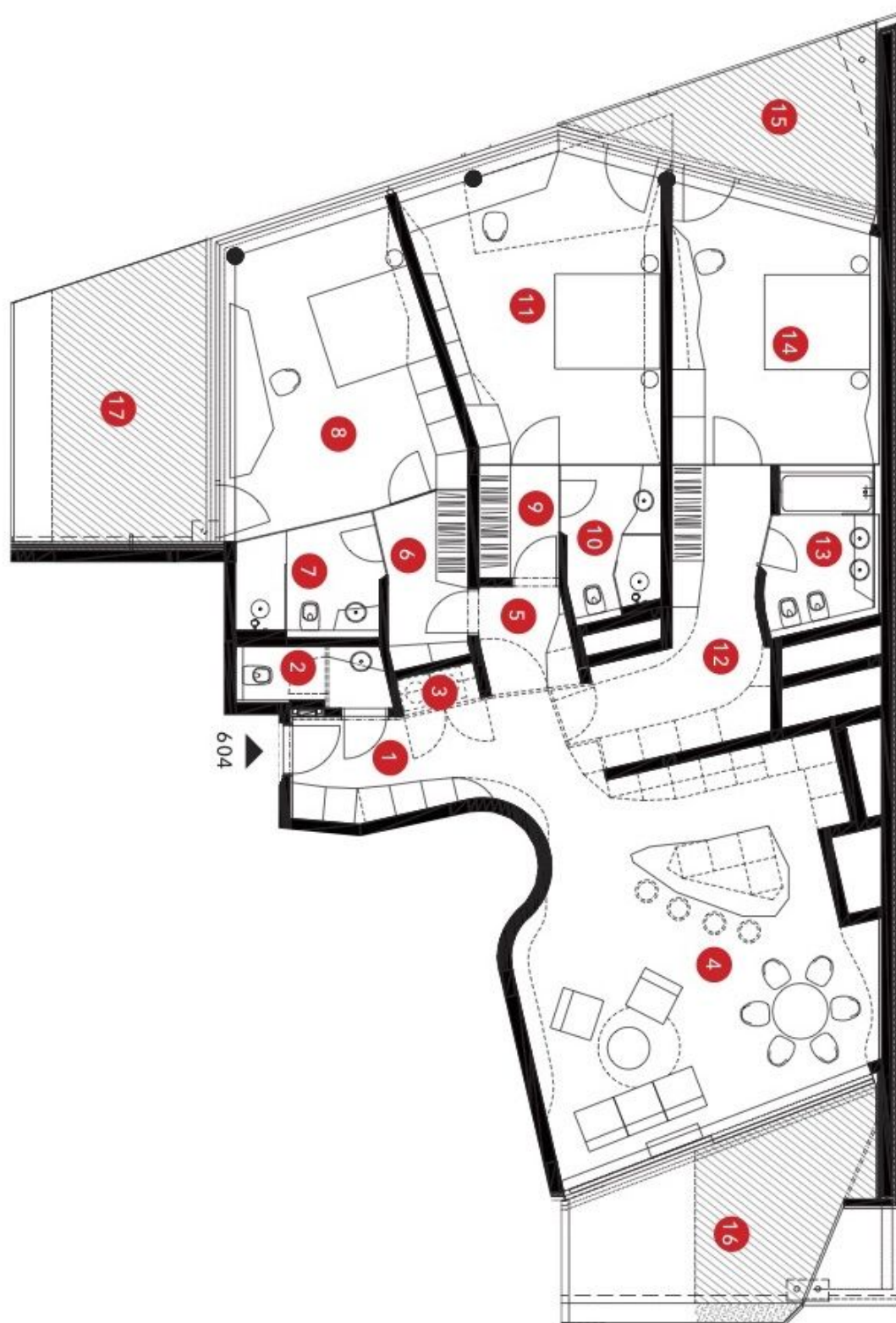
In addition to regular property viewings, we also offer **real-time video viewings** via WhatsApp, FaceTime, Messenger, Skype, and other apps.



Apartment Three-bedroom (4+kk)

174 m², Prague 7, Holešovice

Sold



**Apartment Three-bedroom (4+kk)****Sold**174 m², Prague 7, Holešovice**6. patro**

1	předsíň	10.50 m ²
2	wc	3.35 m ²
3	komora	1.06 m ²
4	obývací pokoj + kuch. kout	42.27 m ²
5	chodba	3.33 m ²
6	chodba	5.05 m ²
7	koupelna + wc I	5.83 m ²
8	ložnice I	20.93 m ²
9	chodba	3.26 m ²
10	koupelna + wc II	5.16 m ²
11	ložnice II	23.62 m ²
12	chodba	13 m ²
13	koupelna + wc III	6.29 m ²
14	ložnice III	19.26 m ²

	podlahová plocha	162.91 m ²
	konstrukce	7.51 m ²
15	terasa I	11.39 m ²
16	terasa II	17.29 m ²
17	terasa III	19.79 m ²

plocha celkem	218.89 m ²
---------------	-----------------------