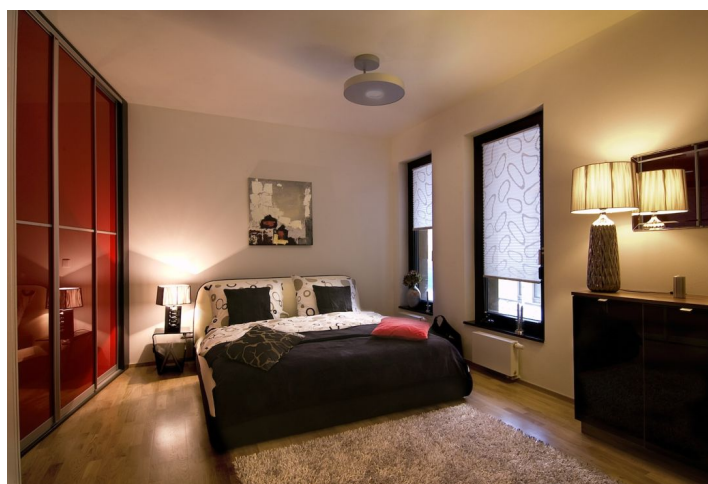




Apartment Two-bedroom (3+kk)

Sold

79 m², Prague 4, Michle, Baarova





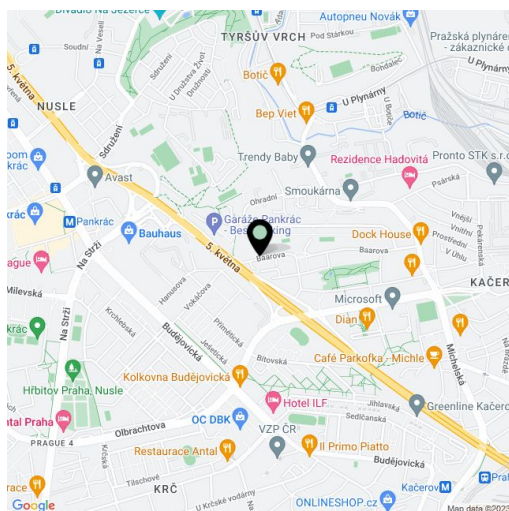
Apartment Two-bedroom (3+kk)

Sold

79 m², Prague 4, Michle, Baarova

| | |
|------------------|--|
| Total area | 88 m² |
| Floor area* | 79 m² |
| Terrace | 9 m² |
| Parking | 1 garage parking space included in the purchase price. |
| Garage | Yes |
| Cellar | Yes |
| PENB | G |
| Reference number | 341 |

Apartment on the 2nd floor of building A, the highest of the three buildings of a new residential development. The project is urbanistically connected to the commercial BB Centrum through a newly created park. The apartment offers bright living room with generous terrace, dining area and kitchen corner (preparation), 2 bedrooms, bathroom, guest toilet and utility room. The apartment features security entrance door Lignis with stainless steel fittings. Wooden floors come either in Ash or Oak. Furnishing standards offer two variants – classic and modern. Bathroom fittings by Laufen and Grohe, tiling by La Faenza / Imola Ceramica. The residence with 24hour reception offers modern lifestyle in an area with full range of amenities. Interior 79.4 m², terrace 8.7 m², cellar 5.6 m² and garage parking for one car included (price including the VAT). The photos come from show apartment.



* Area of the unit according to the Civil Code. The area consists of the sum total area of the entire unit bounded by perimeter walls.