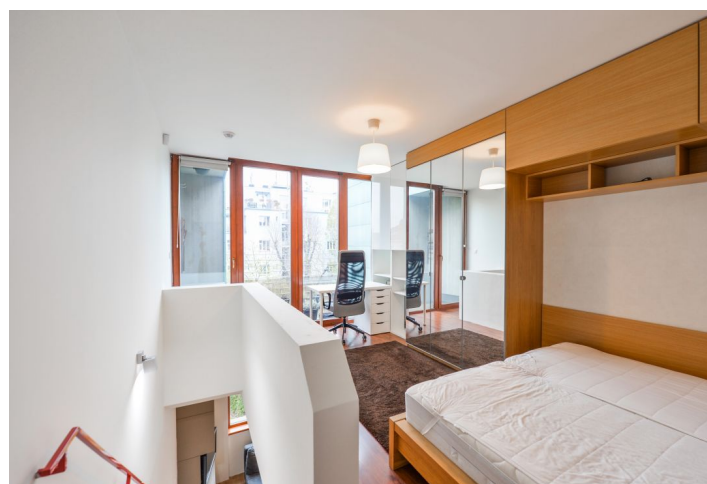
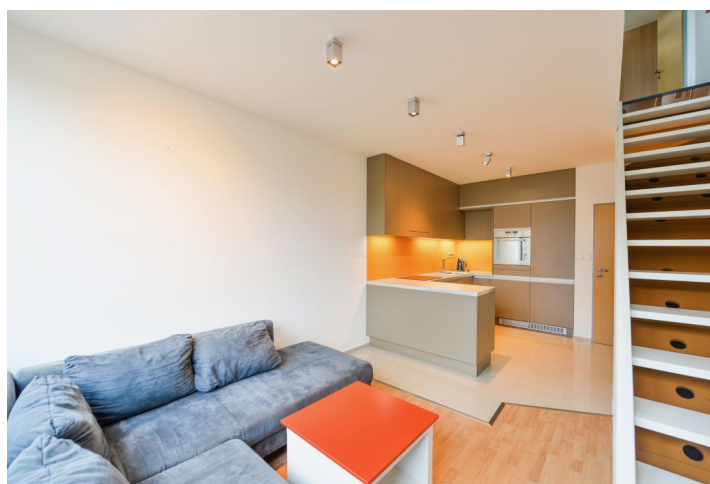




Apartment One-bedroom (2+kk)

Rented

49 m², Prague 8, Libeň, Novákových





Apartment One-bedroom (2+kk)

Rented

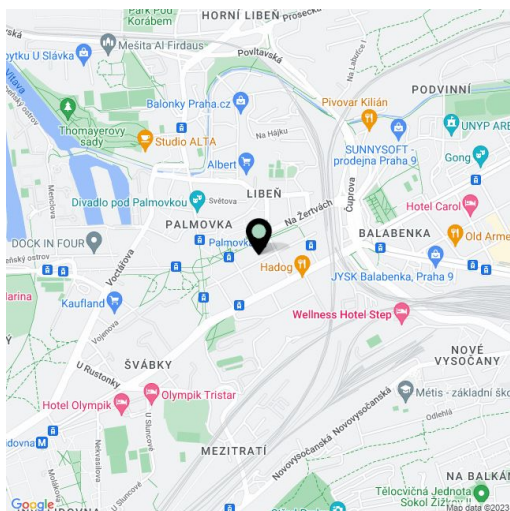
49 m², Prague 8, Libeň, Novákových

Total area	54 m²
Floor area*	49 m²
Balcony	5 m²
Parking	Garage parking at an extra fee.
Garage	Yes
Cellar	-
PENB	G
Reference number	34035
Available from	Immediately

Benefiting from a balcony and green views, this modern furnished 1-bedroom apartment is designed in the style of New York lofts. Situated on the 4th floor in a contemporary residential project with underground parking and a shared courtyard garden, just a two minute walk from Palmovka metro station and tram stops, in a quickly developing location with full amenities within easy reach and with quick access to the city center.

The lower level features a living room with a dining area and a fully fitted open plan kitchen, a storage room, a toilet, and an entrance hall with built-in storage. The upper floor offers an open bedroom with a study area, built-in wardrobes and a **balcony**, plus a bathroom including a bathtub and a toilet. The windows of the apartment are facing west towards the courtyard garden with mature trees.

Laminated floors, tiles, wooden staircase, French windows, security entry door, central heating, washing machine, dishwasher, TV, alarm, chip entry. One **garage parking** space can be rented at CZK 1200 per month. Service charges, water and heating bills: approx. CZK 2700/month. Electricity is billed separately.



* Area of the unit according to the Civil Code. The area consists of the sum total area of the entire unit bounded by perimeter walls.