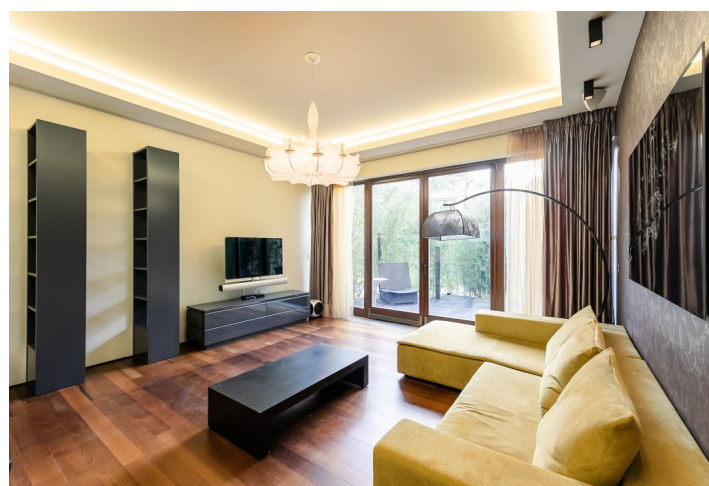




## Apartment Two-bedroom (3+kk)

Rented

120 m<sup>2</sup>, Prague 6, Bubeneč, Mlýnská





## Apartment Two-bedroom (3+kk)

Rented

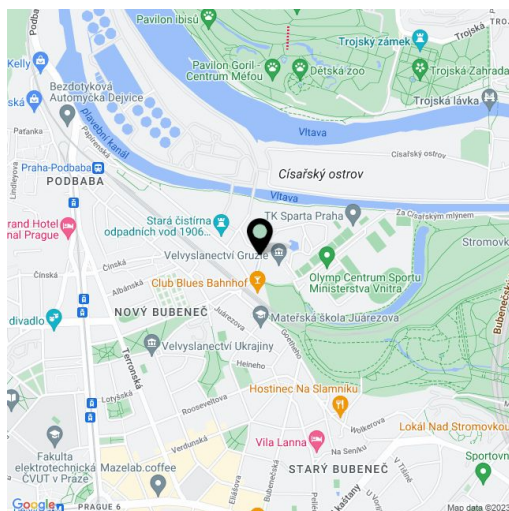
120 m², Prague 6, Bubeneč, Mlýnská

Total area	130 m²
Floor area*	120 m²
Terrace	10 m²
Parking	Garage parking.
Garage	Yes
Cellar	-
PENB	G
Reference number	33990
Available from	Immediately

This is a fully air-conditioned 2-bedroom apartment completely furnished and equipped in ARMANI style. Benefiting from a terrace and beautiful green views, the apartment is situated on the first floor of a modernized residence with a lift, security, a landscaped garden and underground parking. The fully renovated Renaissance building includes a cloister used as a lounge and a meeting room. Located in a quiet romantic area in the prestigious Bubeneč neighborhood, right next to the lovely Stromovka Park, a few minutes from the Vltava riverbank, with great sports and relaxation opportunities, and with quick connection to the city center - two short bus stops from Hradčanská metro with full amenities in the area.

The interior features a living room with a fully fitted open plan kitchen and **terrace** access, 2 bedrooms, a bathroom including a walk-in shower, a bidet and a toilet, an additional guest toilet with a bidet, a large fitted **walk-in closet**, and an entrance hall.

Top quality materials and furnishings, green views, **air-conditioning**, high ceilings, **hardwood floors**, tiles, security entry door, built-in storage, French windows, insect nets, **Miele** appliances, washer, dryer, dishwasher, microwave oven, video entry phone, TV, alarm, camera system and night manned security in the building. An on-site underground **garage parking** space is available at CZK 2000/ month + VAT. Service charges are included in the rent. Utilities are billed separately.



\* Area of the unit according to the Civil Code. The area consists of the sum total area of the entire unit bounded by perimeter walls.