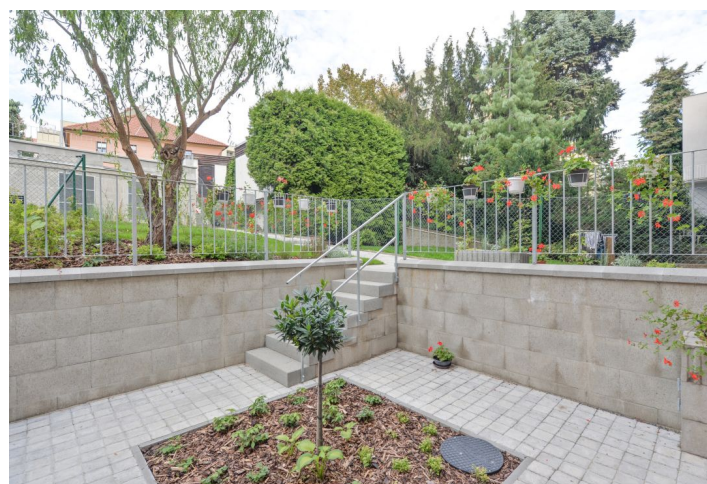




## Apartment One-bedroom (2+kk)

Rented

46 m<sup>2</sup>, Prague 6, Břevnov, Za Kajetánkou





## Apartment One-bedroom (2+kk)

Rented

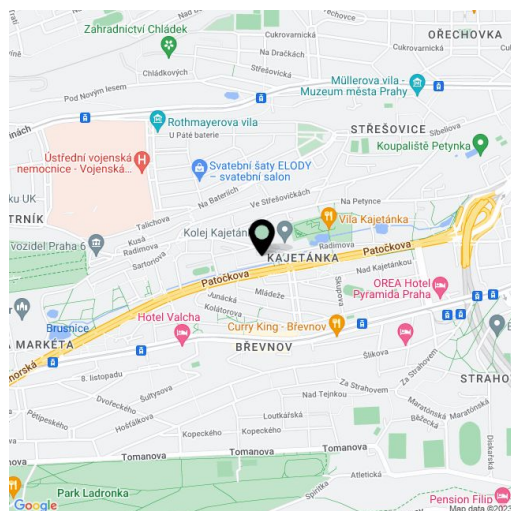
46 m², Prague 6, Břevnov, Za Kajetánkou

|                  |                                                |
|------------------|------------------------------------------------|
| Total area       | 69 m²                                          |
| Floor area*      | 46 m²                                          |
| Terrace          | 23 m²                                          |
| Parking          | Parking on the plot (subject to availability). |
| Cellar           | -                                              |
| PENB             | C                                              |
| Reference number | 33541                                          |
| Available from   | Immediately                                    |

Benefiting from a 23 m² terrace neighboring a shared landscaped garden, this is a brand new 1-bedroom garden apartment with an independent entrance, on the lower ground floor of a newly fully renovated townhouse. Located near the Kajetánka Park, the Břevnov Monastery, and the Ladronka and Hvězda parks, in a quiet Prague 6 neighborhood with great amenities, just a short walk from the Prague Castle. Conveniently located for numerous international schools, the city center and the airport.

The apartment includes a living room with a fully fitted open plan kitchen and **terrace** access, one bedroom, a shower room with a toilet, and an entrance hall with utility area.

**Heat recovery ventilation**, laminated floating floors, tiles, security entry door, triple glazed windows, sofabed, gas boiler, washer / dryer, dishwasher, microwave oven, basic kitchenware, TV, alarm, shared storage room in the garden. A **parking space** on the plot is available at CZK 1500/month (subject to availability). Monthly deposit for service charges, utilities and the Internet: CZK 3700 for one person, CZK 4200 for two persons.



\* Area of the unit according to the Civil Code. The area consists of the sum total area of the entire unit bounded by perimeter walls.