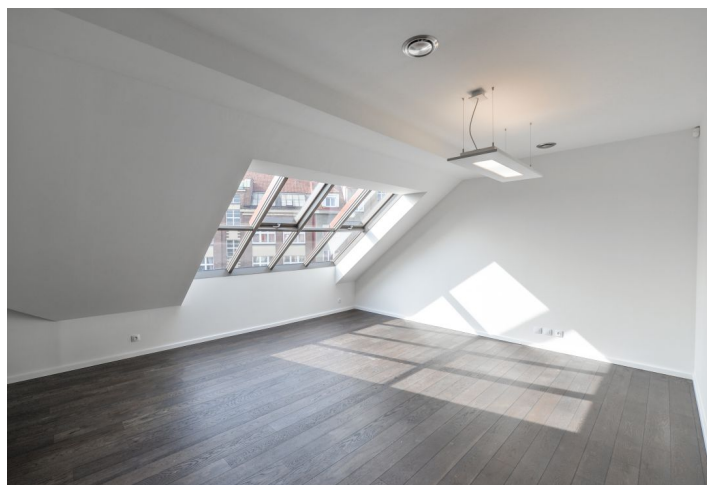
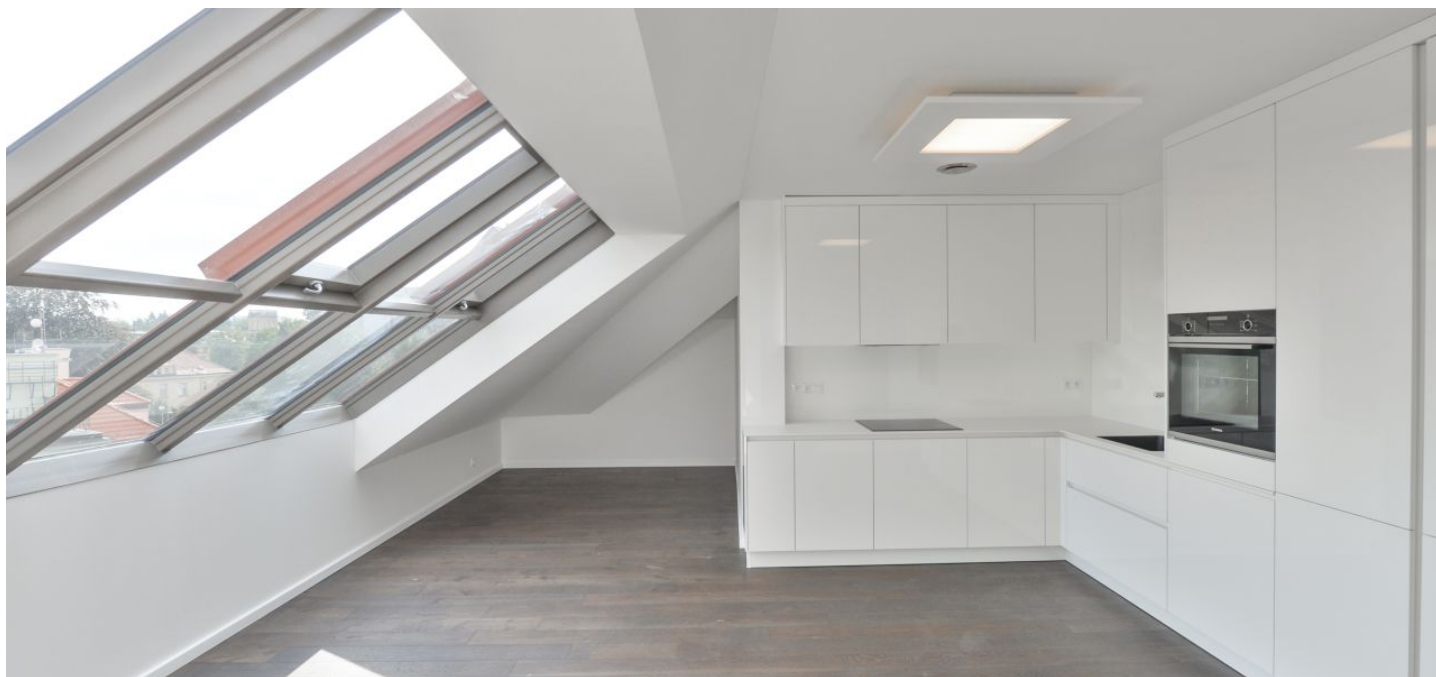




## Apartment Two-bedroom (3+kk)

153 m<sup>2</sup>, Prague 6, Bubeneč, Štursova

Rented





## Apartment Two-bedroom (3+kk)

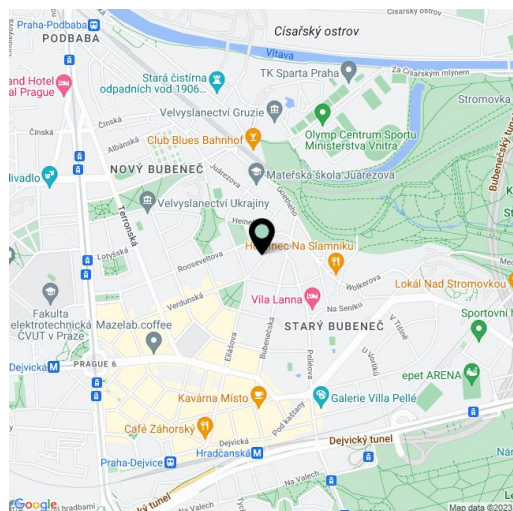
**Rented**153 m<sup>2</sup>, Prague 6, Bubeneč, Štursova

Total area	153 m <sup>2</sup>
Parking	Parking on the plot.
Cellar	Yes
PENB	E
Reference number	33531
Available from	Immediately

This is a fully newly refurbished 2-bedroom attic apartment with parking and access to a shared garden, on the third top floor of a fully renovated residential building. Located in a quiet street in the prestigious Bubeneč neighborhood with numerous foreign embassies and lots of greenery, just a few min. walk from the Stromovka Park. Highly sought after area within walking distance of the Hradčanská and Dejvická metro stations with full amenities in the vicinity and very quick connection to the city center, conveniently located for access to the airport and international schools.

The interior features a comfortable living room, a fully fitted and equipped kitchen with a dining area, two bedrooms, a bathroom (walk-in shower, bathtub, toilet), utility / storage room, and a hall and an entrance hall with built-in wardrobes.

**Beautiful views, air-conditioning, atelier windows, hardwood floors**, large format tiles, underfloor heating in the bathroom, security entry door, central gas heating, dishwasher, induction cooktop, video entry phone, alarm. No lift. One **parking space** on the plot is included. Deposit for service charges and utilities is paid separately.



\* Area of the unit according to the Civil Code. The area consists of the sum total area of the entire unit bounded by perimeter walls.



## Apartment Two-bedroom (3+kk)

153 m<sup>2</sup>, Prague 6, Bubeneč, Štursova

**Rented**

