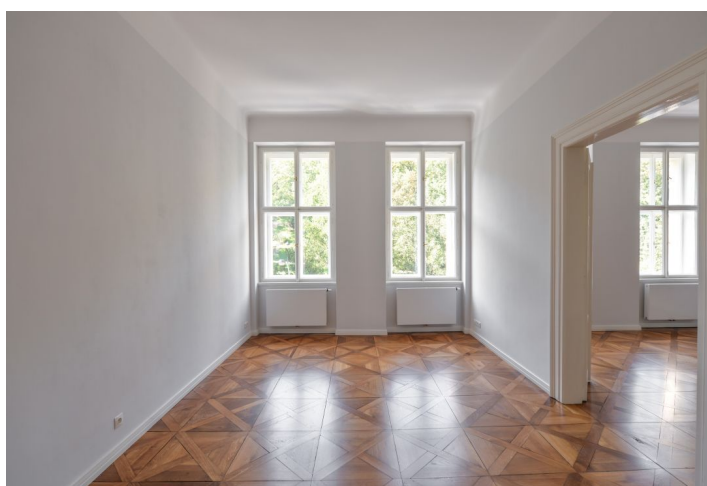




Apartment Two-bedroom (3+1)

Rented

116 m², Prague 5, Smíchov, Holečkova





Apartment Two-bedroom (3+1)

Rented

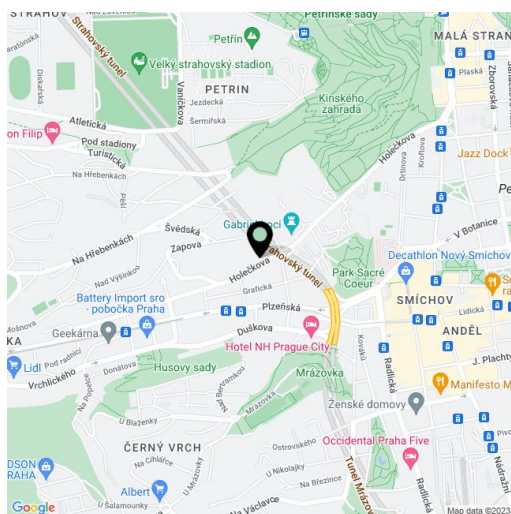
116 m², Prague 5, Smíchov, Holečkova

Total area	116 m ²
Parking	Parking available.
Cellar	-
PENB	G
Reference number	33388
Available from	Immediately

This completely refurbished 2-bedroom flat is on the 2nd floor of an historic building with no lift, in close vicinity of the Kinského Garden and Petřín Hill. Located on the divide of Malá Strana and Smíchov neighborhoods, with full amenities within easy reach and access to the city center in just a few minutes. Conveniently located for the Anděl - Nový Smíchov commercial center, and the French School.

Boasting preserved original features, the apartment includes two bedrooms, a living room, a fully fitted eat-in kitchen, a bathroom with a bathtub and a toilet, an additional toilet, and an entrance hall.

Green views, large windows, high ceilings, **solid wood parquet floors** throughout, security entry door, gas boiler, dishwasher. A **separate storage room** is available. **One courtyard parking space** is included. Service charges and water bills: CZK 650/person/month. Gas and electricity are billed separately.



* Area of the unit according to the Civil Code. The area consists of the sum total area of the entire unit bounded by perimeter walls.