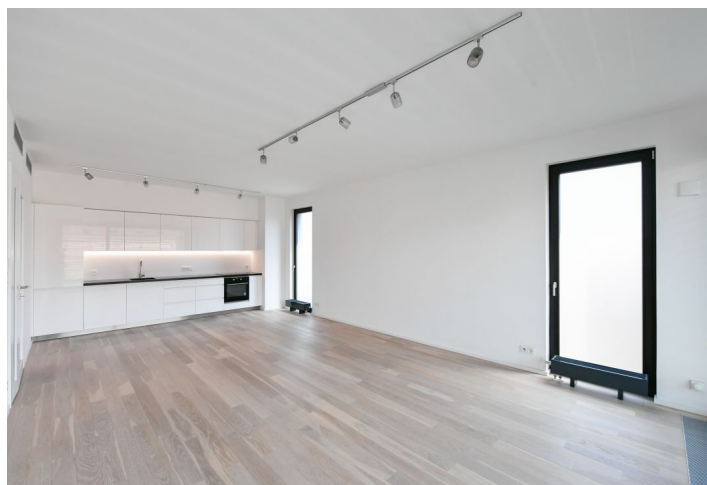
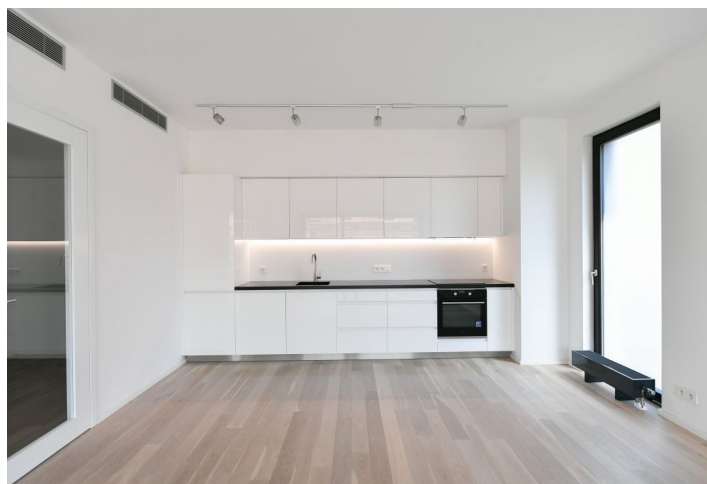




## Apartment Three-bedroom (4+kk)

Rented

136 m<sup>2</sup>, Prague 6, Vokovice, Ke Dvoru



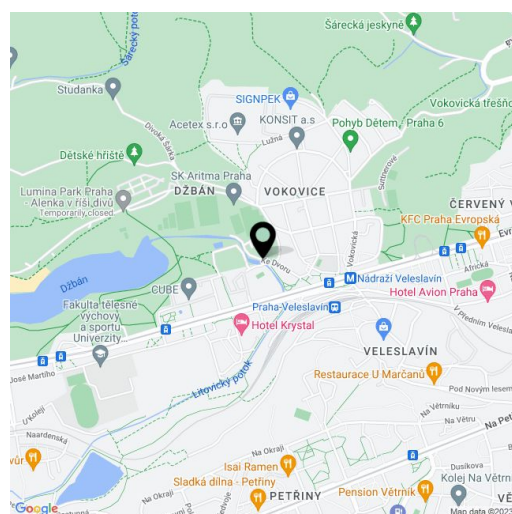


## Apartment Three-bedroom (4+kk)

**Rented**

136 m², Prague 6, Vokovice, Ke Dvoru

Total area	152 m²
Floor area*	136 m²
Loggia	16 m²
Parking	2 enclosed garage parking spaces included in the rent.
Garage	Yes
Cellar	Yes
Service price	Deposit for common building charges CZK 10,000/month. Electricity will be transferred to the tenant.
PENB	B
Reference number	33315
Available from	Immediately



This fully air-conditioned apartment with 2 enclosed balconies is on the 3rd floor of the newly built Šárecký dvůr residential project that uniquely combines modern architecture with the elegant historic style of its preserved original features. The enclosed complex offers a 24/7 reception, underground parking, CCTV, and a beautifully landscaped private park. A lovely location with complete amenities, greenery, and close vicinity of the city center and the airport, close to the Džbán water reservoir and Divoká Šárka nature reserve. The Veleslavín metro station is only a few min. walk away, and the Václav Havel Airport in Ruzyně can be reached in just ten minutes by car or bus. An ideal location for those with an active lifestyle, with opportunities for long walks and cycling, tennis courts, a fitness center, and a golf club and driving range.

The apartment features a living room with a fully fitted open plan kitchen, dining area, and access to the balcony, a master bedroom with an en-suite bathroom (walk-in shower, toilet), another 2 bedrooms, a bathroom with a bathtub, walk-in shower, and toilet, a separate toilet, a utility room, and an entrance hall.

Oak floors, large-format tiles, security entry door, triple-glazed wooden windows, automatic exterior blinds, video entry phone, chip entry to the building, elevator from the garage to the apt. door.

\* Area of the unit according to the Civil Code. The area consists of the sum total area of the entire unit bounded by perimeter walls.