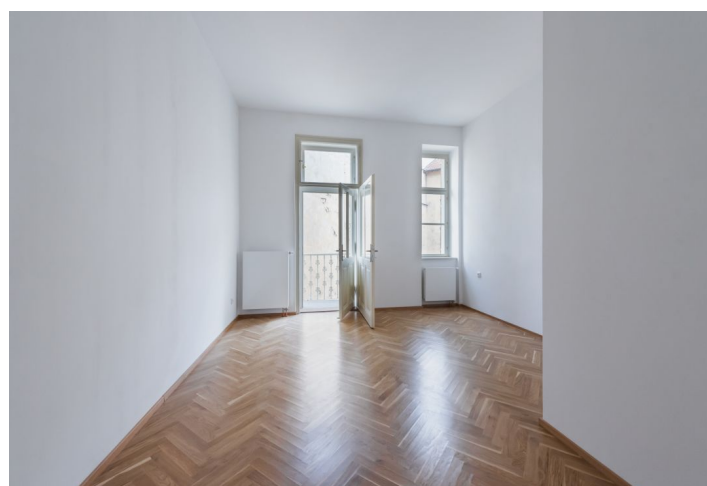
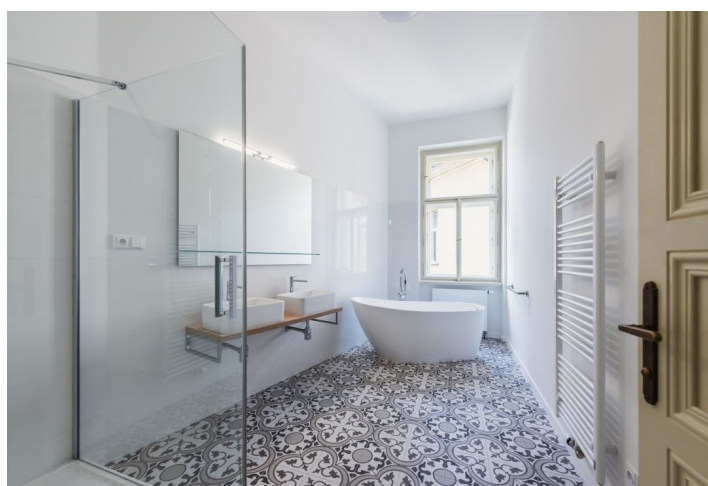




Apartment Two-bedroom (3+1)

Rented

123 m², Prague 1, Nové Město, Na Struze





Apartment Two-bedroom (3+1)

Rented

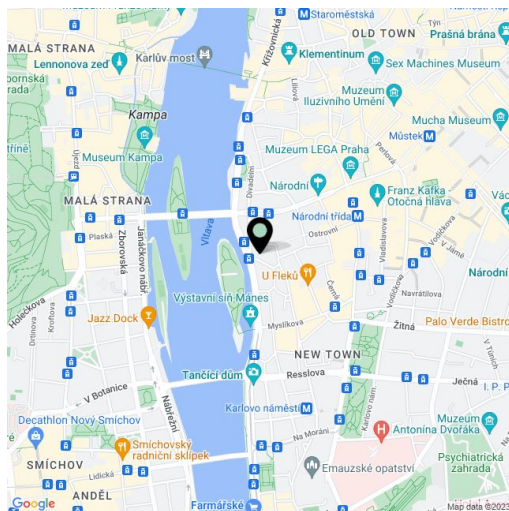
123 m², Prague 1, Nové Město, Na Struze

Total area	126 m²
Floor area*	123 m²
Balcony	3 m²
Parking	-
Cellar	-
PENB	G
Reference number	33236
Available from	Immediately

Rental apartment just steps from the Vltava riverbank, the Žofín Palace and the National Theatre. This is a fully newly renovated 2-bedroom apartment with a balcony on the third floor of a completely newly refurbished traditional residential building with preserved original details and a new lift. Well located in a quiet street in the historic center of Prague, just a minute walk from trams, a few min. from Karlovo náměstí metro station, with full amenities in the immediate neighborhood.

The interior features three interconnected rooms: a fully fitted kitchen with a dining area, a living room and one bedroom. There is a separate second bedroom with a **balcony** offering views of the courtyard and the roof of the National Theater - the famous "golden crown", a bathroom including a bathtub and a walk-in shower, two separate toilets, utility area, and an entrance hall.

Solid wood parquet floors, large format tiles, high ceilings, gas boiler, washing machine, dishwasher. The apartment can be equipped with furniture at a higher rent. Service charges and utilities are billed separately.



* Area of the unit according to the Civil Code. The area consists of the sum total area of the entire unit bounded by perimeter walls.