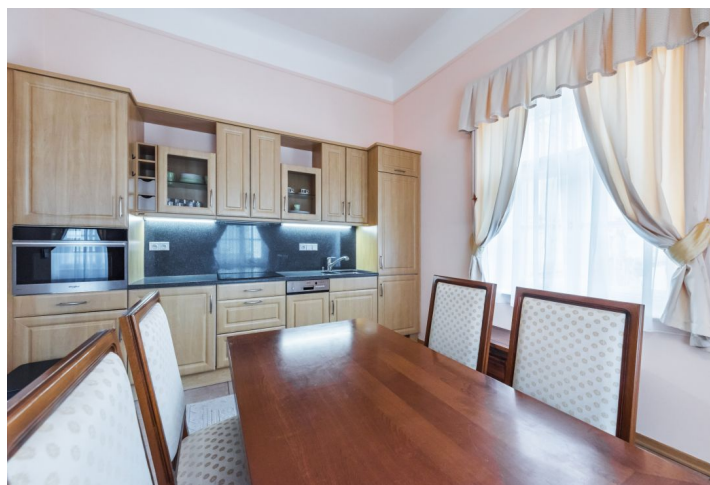




## Apartment One-bedroom (2+kk)

Rented

59 m², Prague 1, Hradčany, Loretánská





## Apartment One-bedroom (2+kk)

**Rented**

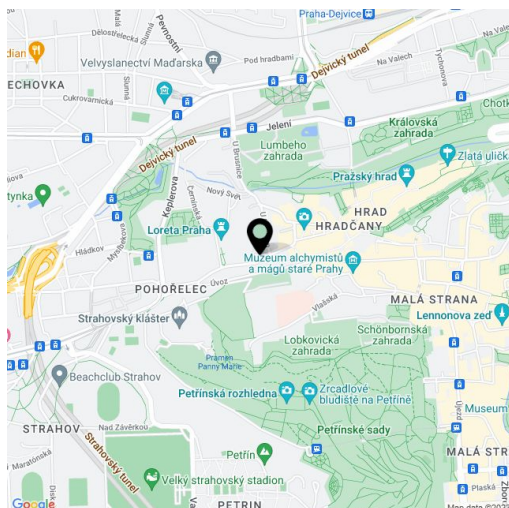
59 m², Prague 1, Hradčany, Loretánská

Total area	74 m²
Floor area*	59 m²
Terrace	15 m²
Parking	-
Cellar	-
Service price	Service charges and utilities are billed separately.
PENB	G
Reference number	33195
Available from	Immediately

Furnished apartment located just 300 m from the Prague Castle. Boasting an exclusive location and historic charm, this is a fully renovated and furnished 1-bedroom apartment with a private terrace. Situated on the first floor of a historic building with preserved original features in a picturesque street with arcades, on the edge of the Loreta Square with the famous Baroque Loreta Sanctuary and the Czernin Palace, in the immediate neighborhood of other numerous historic monuments incl. the Prague Castle, the Strahov Monastery, and just minutes from the Petřín Hill. Located a few min. walk from Pohořelec with a tram stop providing connections to metro and the city center.

The interior of the apartment features a comfortable living room with a dining area, a fully integrated kitchen and views of the Loreta Square, a bedroom with a private courtyard **terrace**, a bathroom including a massage bath, a walk-in shower, a bidet and a toilet, and an entrance hall.

High ceilings, **solid wood parquet floors**, tiles, washing machine, dishwasher, kitchenware, TV, video entry phone. No lift.



\* Area of the unit according to the Civil Code. The area consists of the sum total area of the entire unit bounded by perimeter walls.