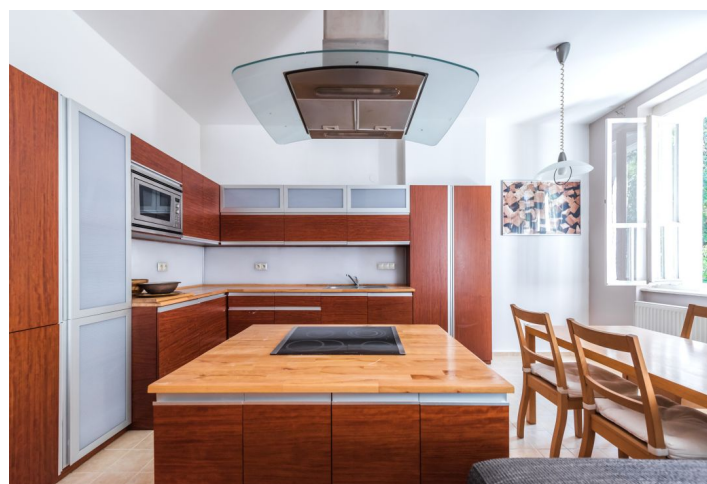




## Apartment One-bedroom (2+kk)

Rented

75 m², Prague 5, Smíchov, Na Václavce





## Apartment One-bedroom (2+kk)

**Rented**

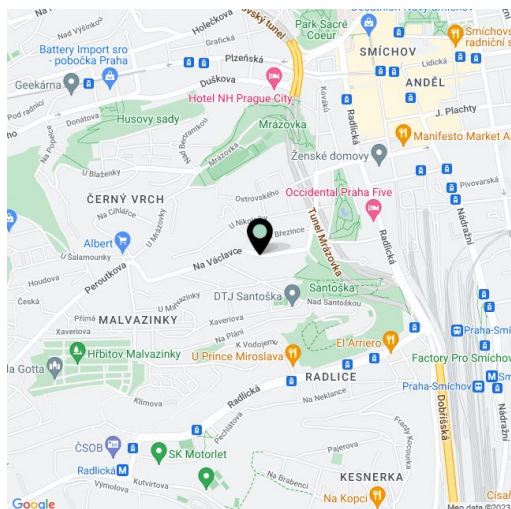
75 m², Prague 5, Smíchov, Na Václavce

Total area	75 m²
Parking	-
Cellar	Yes
PENB	G
Reference number	33141
Available from	Immediately

This furnished renovated 1-bedroom flat is on the second floor of a historic residential building with a shared roof terrace providing beautiful unobstructed views of Prague, in close vicinity of the Santoška Park, the Nikolajka Winter Stadium and a tennis court. Located in Smíchov, Prague 5, in an area with quick access to the city center and full amenities, within easy reach of the French School, Nový Smíchov commercial and entertainment center and Anděl metro station, line B.

The interior features a living room with a dining area and a fully fitted open plan kitchen, one bedroom, a **large walk-in closet**, a bathroom incl. a corner bathtub and a toilet, and an entrance hall. The apartment enjoys nice green views of the adjacent garden and the tenants are welcome to use the **roof terrace** accessible from the attic.

Spacious airy rooms, preserved original details, high ceilings, large windows, **solid wood parquet floors**, tiles, security entry door, gas boiler, washer, dishwasher, microwave oven, TV, **cellar**, balcony on the mezzanine floor of the building. **No lift**. Service charges and water bills: approx. CZK 1200/month for 2 persons. Gas and electricity are billed separately.



\* Area of the unit according to the Civil Code. The area consists of the sum total area of the entire unit bounded by perimeter walls.