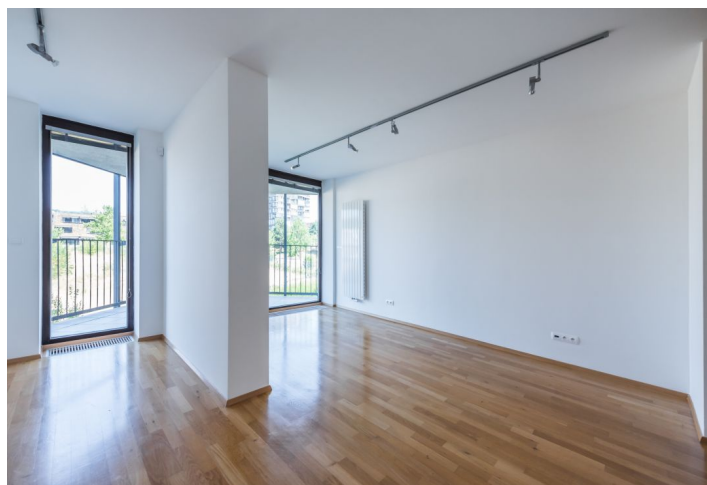
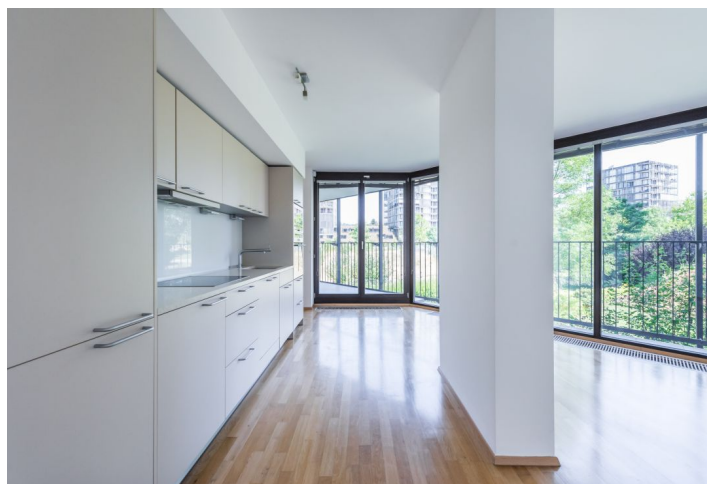




## Apartment Two-bedroom (3+kk)

**Sold**

108 m<sup>2</sup>, Prague 3, Žižkov, Pitterova





## Apartment Two-bedroom (3+kk)

**Sold**108 m<sup>2</sup>, Prague 3, Žižkov, Pitterova

Total area	140 m <sup>2</sup>
Floor area*	108 m <sup>2</sup>
Loggia	32 m <sup>2</sup>
Parking	Garage parking space
Garage	Yes
Cellar	Yes
Service price	8 500 CZK monthly
PENB	C
Reference number	33131

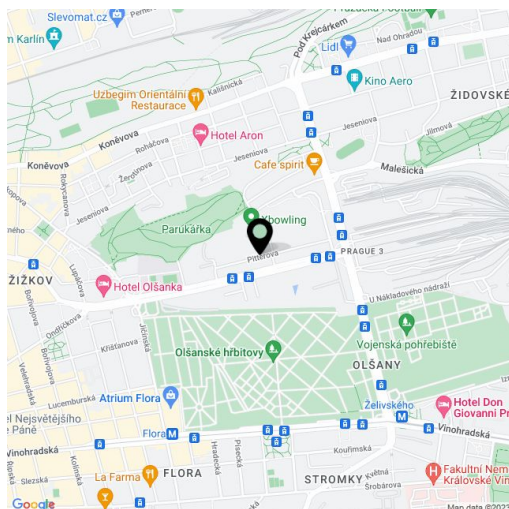
This modern apartment with a terrace overlooking the greenery is located on the 2nd floor of the Central Park residential complex with a 24-hour reception, underground parking, an elevator, a security guard, and a café in a location with full amenities and fast access to the city center. The project is situated in close proximity to Parukářka Park.

The apartment is divided into a living room with a kitchen, a master bedroom with an en-suite bathroom, a second bedroom, a bathroom, an entrance hall, and a closet with a connection for a washing machine. **All rooms have access to a covered terrace.**

Facilities include **large-format floor-to-ceiling aluminum windows** with interior blinds, **wooden floors**, a security entry door, a video entry phone, and a kitchen unit with built-in appliances. Heating is provided from the central boiler room. The purchase price includes a **garage parking place** and a **cellar**. The residential complex has a reception, a security guard, a camera system, and an electronic entrance to the building.

The Central Park Residence by the **A69 architectural studio** has been awarded the Grand Prix of Architects 2010 - **National Award for Architecture**. Nearby, there are cafes, groceries, playgrounds, a health center, or a sports center with tennis courts, a fitness area, and a sauna. Tram stops with many links, including night ones, are just a few steps from the building. The Želivského metro station (line A) is within 4 minutes by tram. The complex includes a **private landscaped park**, and another large green area on **Parukářka Hill** is within a short walk from the building.

Interior 107.83 m<sup>2</sup>, terrace 31.73 m<sup>2</sup>, cellar 7,4 m<sup>2</sup>



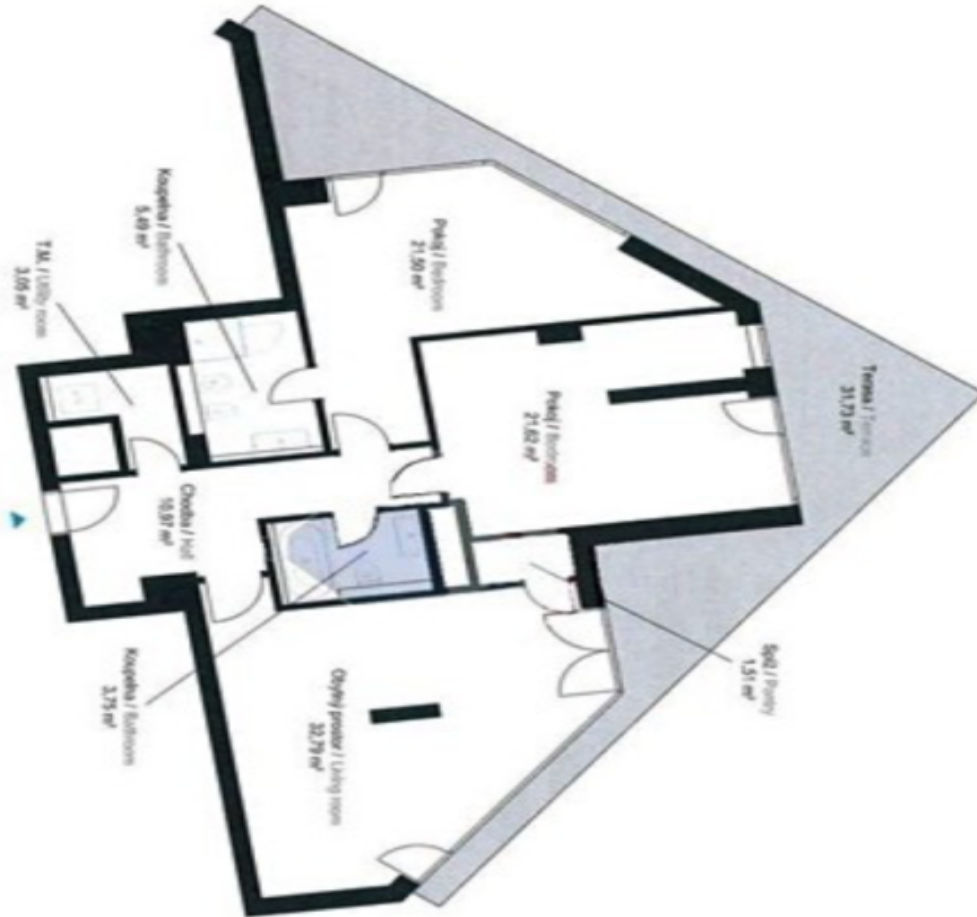
\* Area of the unit according to the Civil Code. The area consists of the sum total area of the entire unit bounded by perimeter walls.



## Apartment Two-bedroom (3+kk)

Sold

108 m², Prague 3, Žižkov, Pitterova



3+kk 2-bedr	1084
3. podlaží 3rd Fl	31.1
Shrnulí Summ	7.1
Podlaží Floor	
Obytný prostor Living room	
Koupelna Bathroom	
Pokoje Bedrooms	
Terasa Terrace	
Výhled z balkonu Garden Area	
Výhled z terasy Garden Area	
Výhled z balkonu Garden Area	