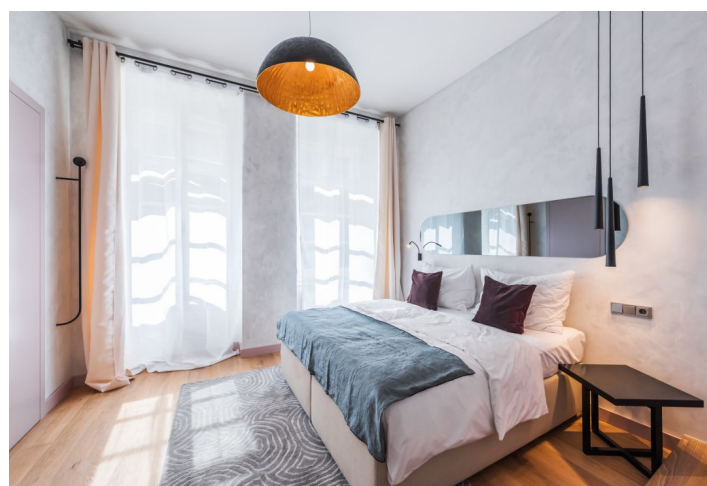
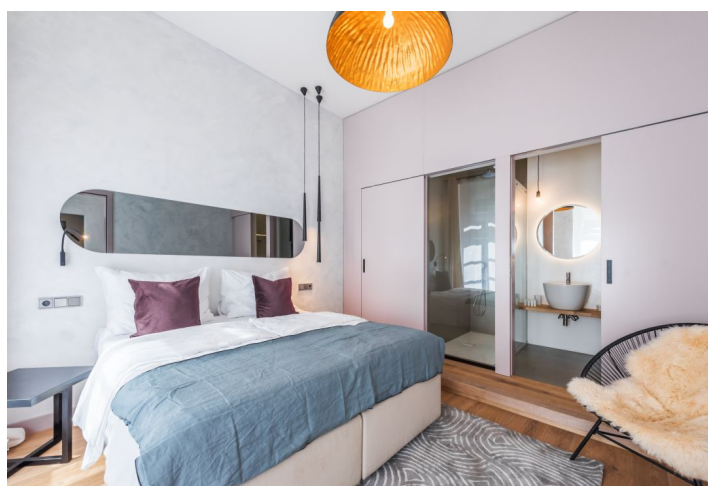




Apartment One-bedroom (2+kk)

Rented

59 m², Prague 1, Nové Město, Opatovická





Apartment One-bedroom (2+kk)

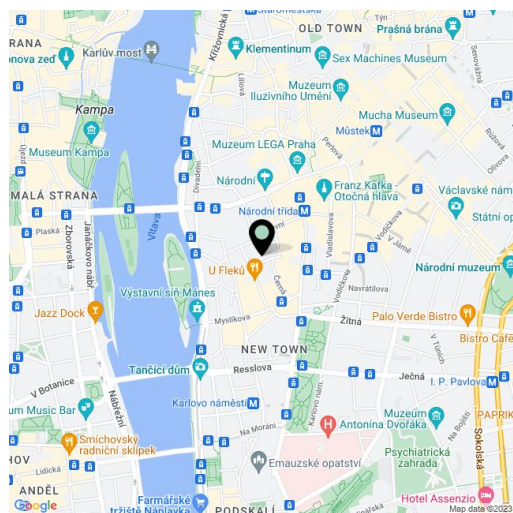
Rented59 m², Prague 1, Nové Město, Opatovická

Total area	59 m ²
Parking	Garage parking at CZK 2,000/month.
Garage	Yes
Cellar	Yes
PENB	G
Reference number	33129
Available from	Immediately

This fully furnished 1-bedroom 2-bathroom apartment after a complete renovation is on the first floor of a well maintained and secure refurbished traditional building with an elevator. Wonderfully located on a quiet street in the historic center of Prague, just moments from the Vltava riverbank and the National Theatre. Just a few min. walk from tram stops and the Národní třída metro station, Žofín Island, and the Mánes Exhibition Hall, with full amenities in the immediate vicinity.

The interior includes a walk-through living room, a fully fitted open plan kitchen in the entrance hall, one bedroom with an en-suite bathroom (walk-in shower, toilet, bidet shower) and a **fitted walk-in closet**, and a second bathroom appointed in the same way.

Hardwood floors, high ceilings, large windows, security entry door, washing machine, Miele kitchen appliances incl. a dishwasher, TV, master switch, video entry phone, alarm, shared courtyard balcony accessible from the first floor corridor. **Garage** parking is available in the courtyard of the building at CZK 2,000/month. Service charges and water: CZK 1,000/person/month. Gas and electricity billed separately (transferred to the tenant).



* Area of the unit according to the Civil Code. The area consists of the sum total area of the entire unit bounded by perimeter walls.