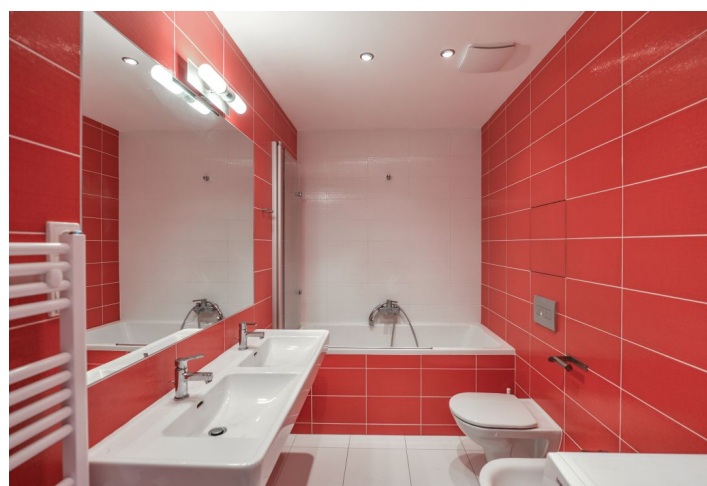
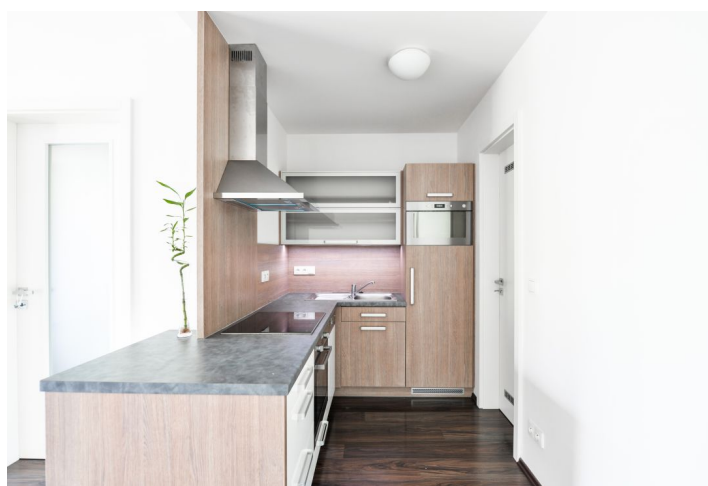
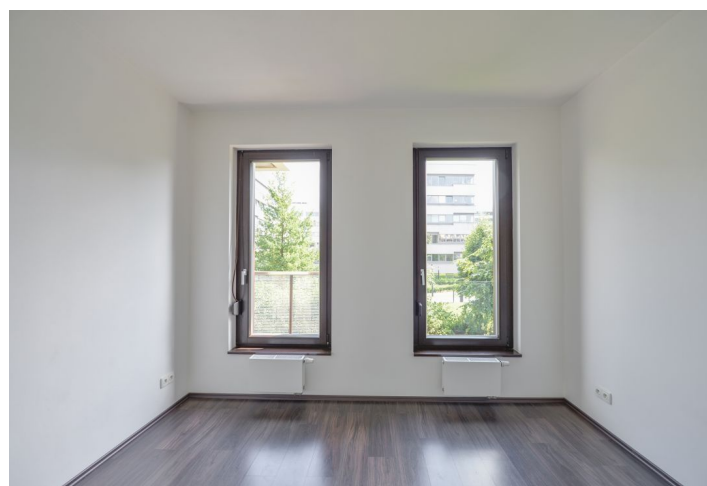




## Apartment One-bedroom (2+kk)

Rented

59 m², Prague 4, Michle, Baarova





## Apartment One-bedroom (2+kk)

**Rented**

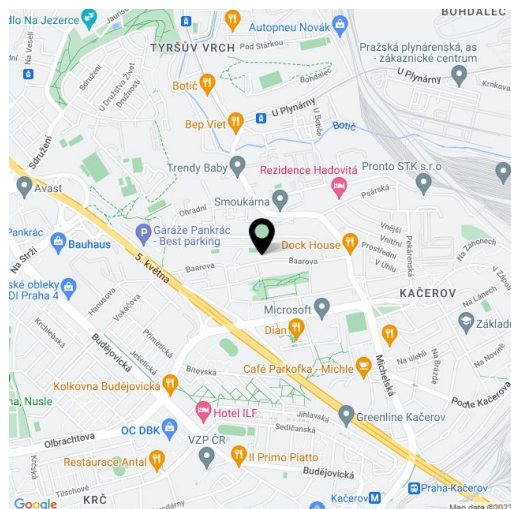
59 m², Prague 4, Michle, Baarova

Total area	66 m²
Floor area*	59 m²
Balcony	7 m²
Parking	Garage parking.
Garage	Yes
Cellar	Yes
PENB	G
Reference number	32969
Available from	Immediately

This is a 1-bedroom apartment with a balcony and green views, on the first floor with lift in the recently built Residential Park Baarova complex with a 24/7 reception and security, a park, a children's playground and underground parking. The residence is located in an area offering full range of amenities, near the BB Centrum and Brumlovka multipurpose centers, with bus connections to Budějovická and Pankrác metro stations and quick access to the city center.

The interior features a living room with a fully fitted open plan kitchen, a dining space and **balcony** access, one bedroom and an adjacent corridor with built-in wardrobes, a bathroom (bathtub with a shower screen, double sink, toilet), an additional separate toilet, and an entrance hall with built-in wardrobes.

Laminated floors, tiles, security entry door, external blinds, central heating, washer, dishwasher, induction cooktop, microwave oven, 6.4 m² **cellar**, chip entry to the building, bike and pram storage. One **garage parking** space is available at CZK 2500/month. Monthly deposit for service charges and utilities: approx. CZK 4800.



\* Area of the unit according to the Civil Code. The area consists of the sum total area of the entire unit bounded by perimeter walls.