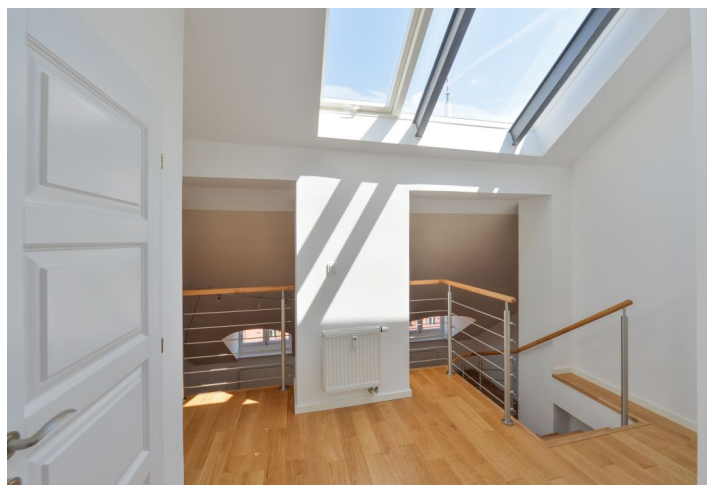
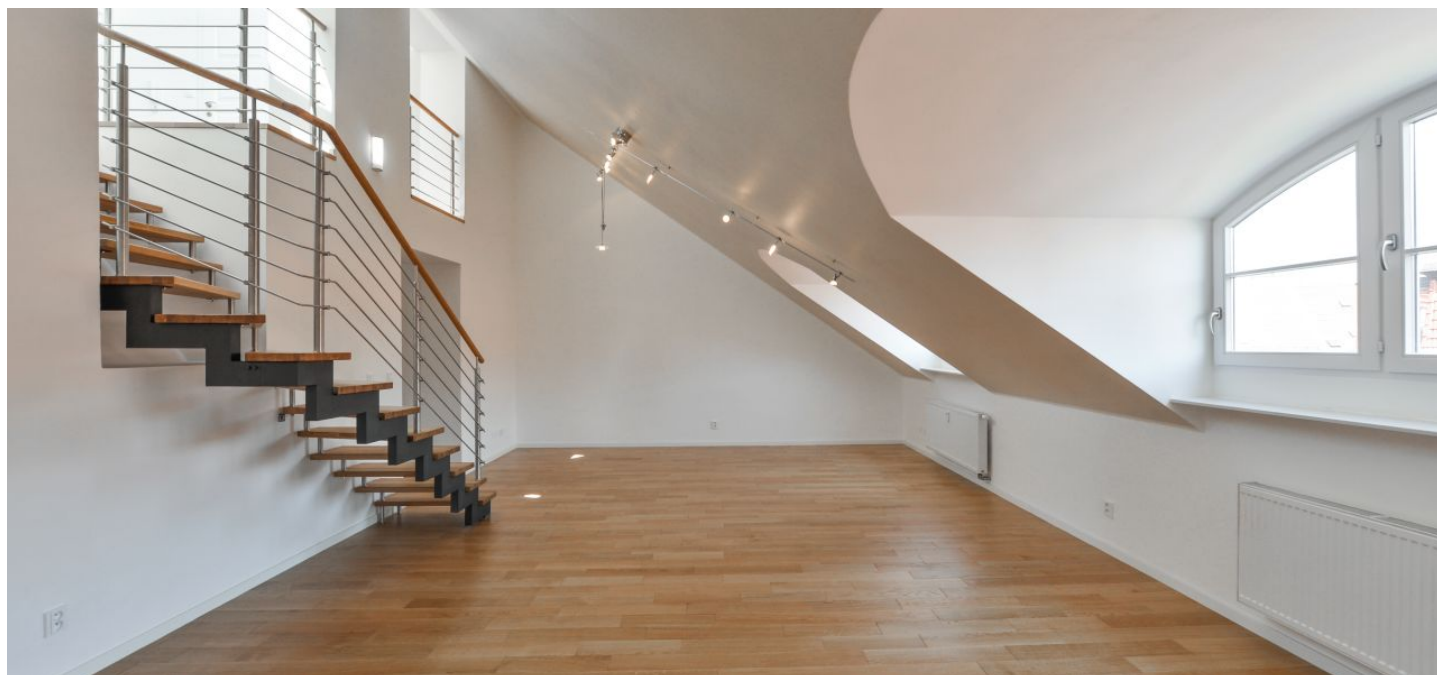




## Apartment Two-bedroom (3+1)

Rented

114 m<sup>2</sup>, Prague 2, Vinohrady, Slavikova





## Apartment Two-bedroom (3+1)

**Rented**

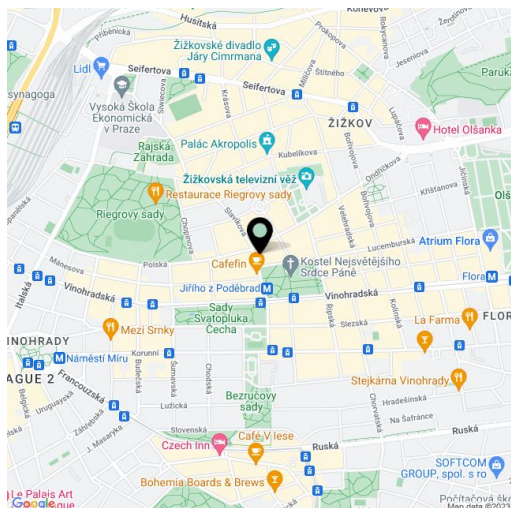
114 m², Prague 2, Vinohrady, Slavíkova

|                  |             |
|------------------|-------------|
| Total area       | 118 m²      |
| Floor area*      | 114 m²      |
| Terrace          | 4 m²        |
| Parking          | -           |
| Cellar           | -           |
| PENB             | G           |
| Reference number | 32629       |
| Available from   | Immediately |

Completely refurbished 2-bedroom 2-bathroom split-level attic apartment with a balcony, on the fifth floor of a fully renovated historic building with a lift and nicely preserved original details. Well located in the popular residential neighborhood of Vinohrady with full amenities within easy reach, just moments from the Riegrovy sady park, and a few min. walk from Jiřího z Poděbrad Square with a metro station, tram stop, trendy bistros, restaurants, cafes and a popular fresh produce market.

The lower level includes a spacious living room, a fully fitted eat-in kitchen with **balcony** access, a bathroom (**massage shower**, toilet), a storage room, and an entrance hall. The upper floor offers a gallery with skylights, two separate bedrooms with built-in wardrobes and French windows overlooking the back yard, and a bathroom (bathtub, toilet).

**Solid wood parquet floors**, tiles, Bosch appliances, dishwasher, induction cooktop, microwave oven. Service charges, heating and water bills: approx. CZK 3500 per month. Electricity is billed separately.



\* Area of the unit according to the Civil Code. The area consists of the sum total area of the entire unit bounded by perimeter walls.