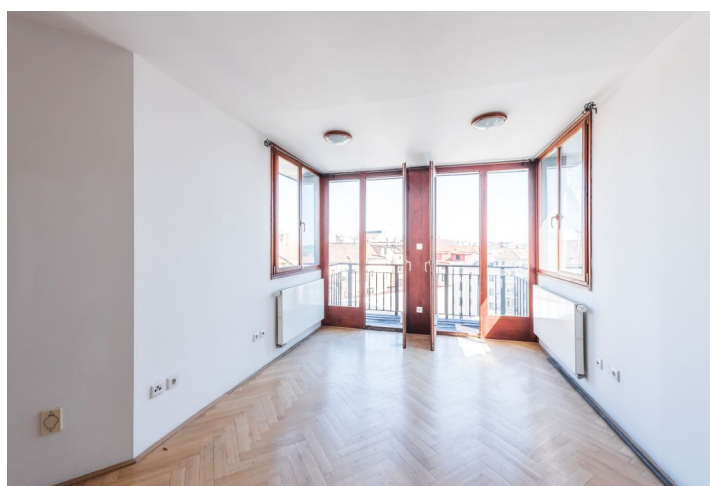
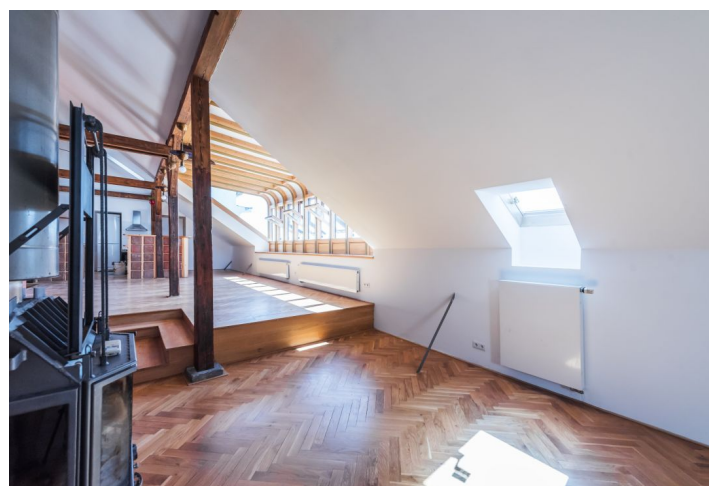
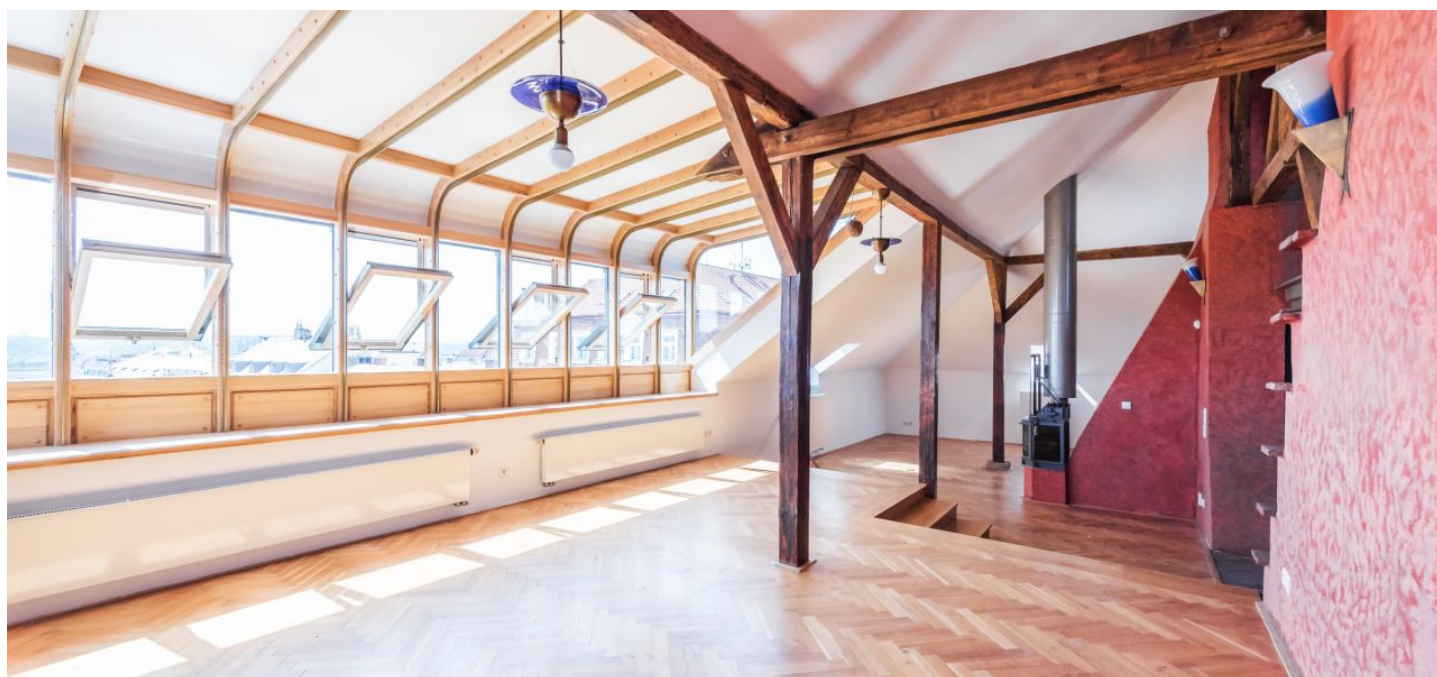




Apartment Four-bedroom (5+kk)

Rented

250 m², Prague 2, Vinohrady, Jana Masaryka





Apartment Four-bedroom (5+kk)

Rented

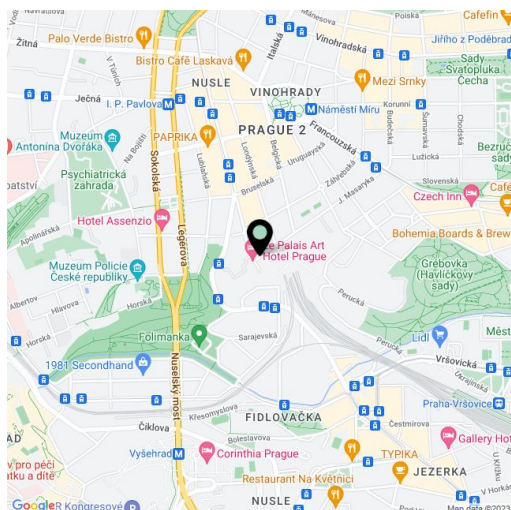
250 m², Prague 2, Vinohrady, Jana Masaryka

Total area	270 m²
Floor area*	250 m²
Terrace	20 m²
Parking	-
Cellar	-
PENB	G
Reference number	32603
Available from	Immediately

Impressive duplex apartment boasting a roof terrace and panoramic views of Prague. This is a spacious, fully refurbished 4-bedroom 3-bathroom attic apartment with a balcony and a direct access from the lift. Situated on the fourth floor of a renovated building in a lovely residential neighborhood of tree-lined streets and parks, sidewalk cafes, restaurants and bars, offering great atmosphere, and with the Havlíčkovy Sady Park just down the street. Great location with very quick access to the city center, just a short walk to Náměstí Míru Square with metro and multiple tram links.

The lower level includes a huge **air-conditioned** open space area including a fully fitted kitchen, a dining room and a living area with a **slow burning stove**, a master bedroom with an en-suite bathroom (bathtub, walk-in shower, double sink, toilet) and an adjacent **study / walk-in closet**, two further bedrooms, a family bathroom (bathtub, walk-in shower), a separate toilet, a pantry, and an open entrance hall. The upper floor features a bedroom / study with a **balcony** and a **walk-in closet**, plus a bathroom (walk-in shower, toilet). The third level offers a large **roof terrace** overlooking the city.

High ceilings, **solid wood parquet floors**, tiles, central vacuum cleaner, wooden beams, dishwasher, alarm. Service charges CZK 900 per person monthly. Gas and electricity will be transferred to the tenant.



* Area of the unit according to the Civil Code. The area consists of the sum total area of the entire unit bounded by perimeter walls.