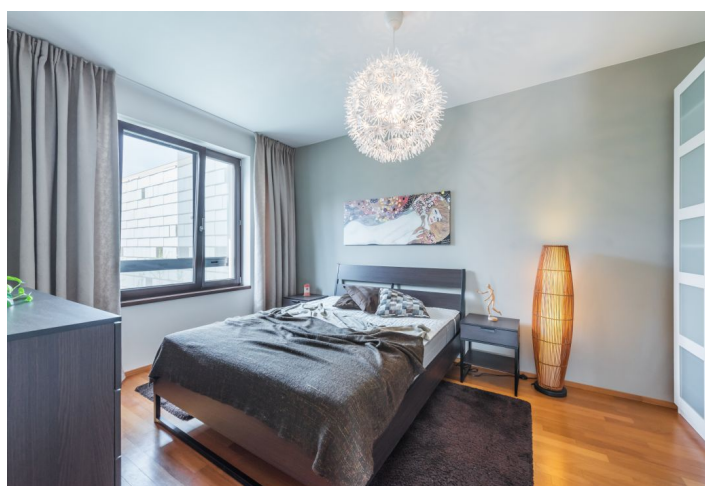
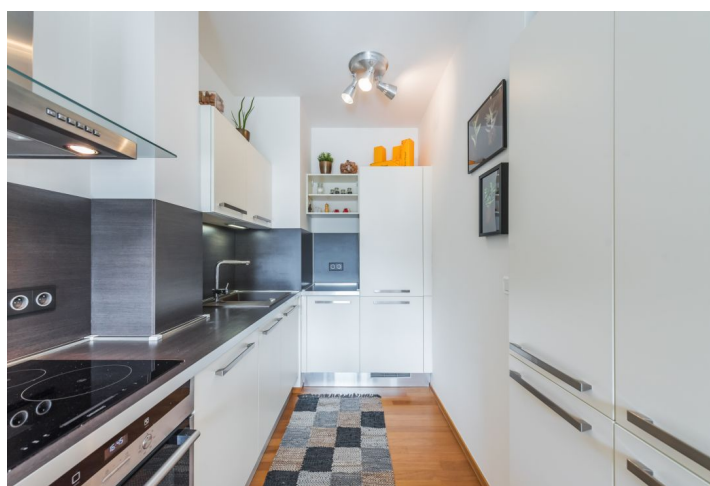




## Apartment One-bedroom (2+kk)

Rented

65 m², Prague 8, Karlín, Šaldova





## Apartment One-bedroom (2+kk)

**Rented**

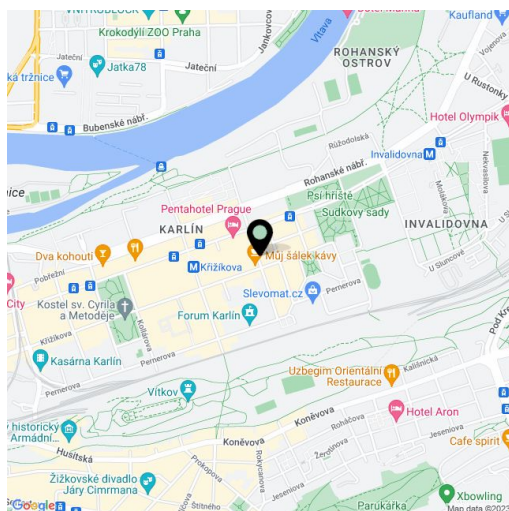
65 m², Prague 8, Karlín, Šaldova

Total area	65 m²
Parking	Garage parking.
Garage	Yes
Cellar	Yes
PENB	C
Reference number	32351
Available from	Immediately

This fully furnished 1-bedroom apartment is on the second floor of a recently built modern residence - Cornlofts Šaldova. Located in a quiet street in a highly sought after Prague 8 area with quick connections to the city center, just three minutes from a tram stop and Křižíkova metro station. Building amenities include a lift, security cameras, shared landscaped courtyard garden and underground parking.

The apartment includes a living room with a dining area and a fully fitted open plan kitchen, one bedroom, a bathroom with a bathtub and a toilet, and an entrance hall.

**Wooden floors**, tiles, ample storage, underfloor heating in the bathroom, security entry door, washer / dryer, dishwasher. **Two garage parking** spaces are available at CZK 3200/space/month. **Cellar** is available at extra charge. Service charges, water and heating bills: CZK 5000/month for two persons. Electricity in the approximate amount of CZK 1000/month is billed separately. **Mid term rental** is available for a higher rent.



\* Area of the unit according to the Civil Code. The area consists of the sum total area of the entire unit bounded by perimeter walls.