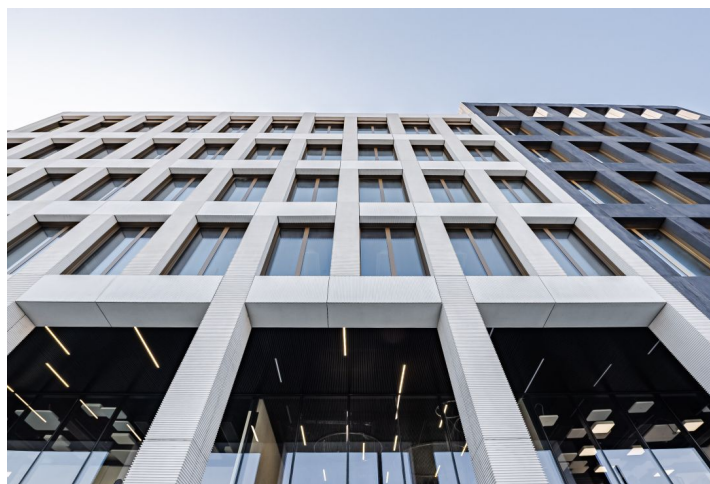
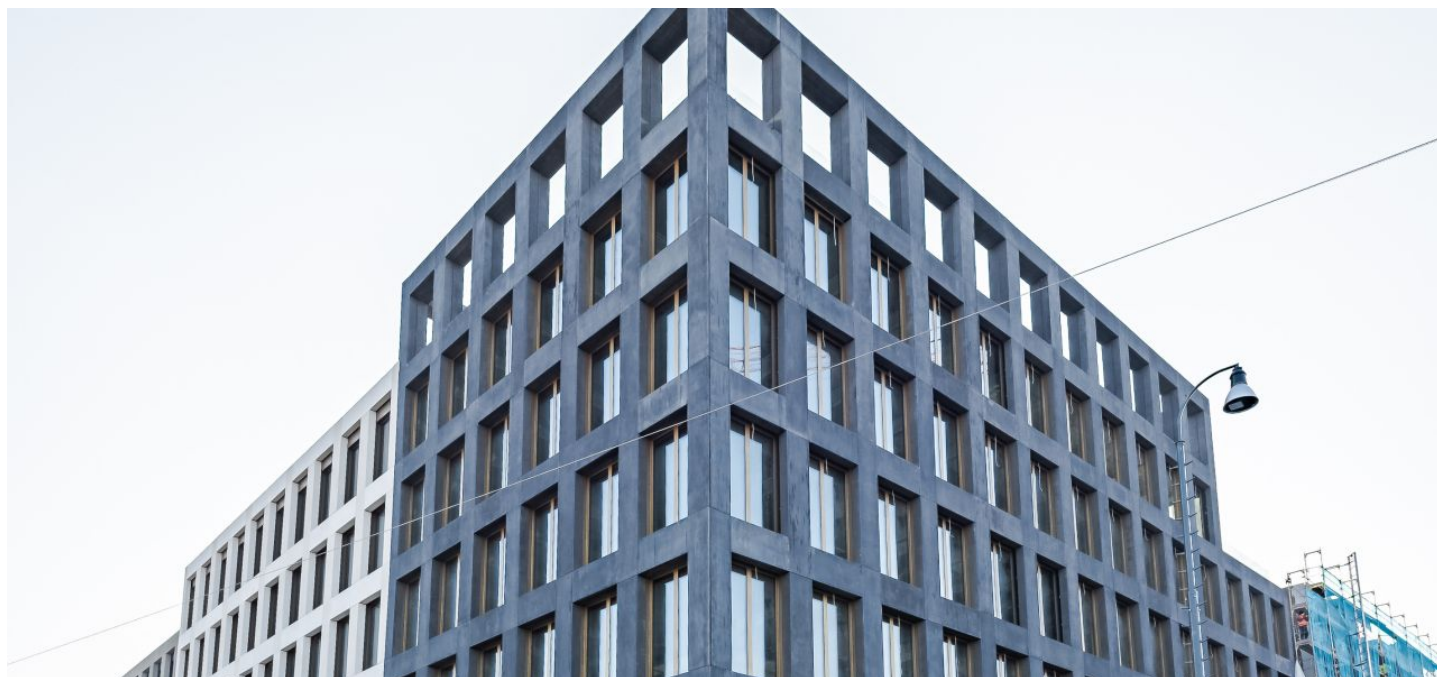




Retail space

Prague 5, Smíchov, Na Knížecí

Ask for price





Retail space

Prague 5, Smíchov, Na Knížecí

[Ask for price](#)

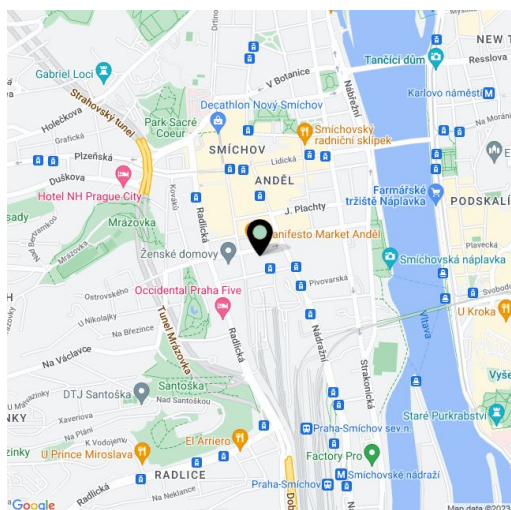
Available area	350 m ²
Parking	Yes
PENB	A
Reference number	32202

Offices space for lease on the 5th floor in the first completed office building that is part of a project that form the main facade of newly created space. In the future, the adjacent space of the bus terminal will be transformed and a city building with a park should be built. The highly efficient building includes sustainable technologies. BREEAM Excellent certificate.

Location:

The building is located in a sought-after location of Prague 5 and is easily accessible by car and public transport and within walking distance of the Andel metro station (line B), the Smichov train station, and other tram and bus stops. It will also have excellent connections to the Prague Ring Road and the Mrázovka and Strahov tunnels.

Rental and service charges listed without VAT. Lessee pays no commission.





Retail space

Prague 5, Smíchov, Na Knížecí

Ask for price

