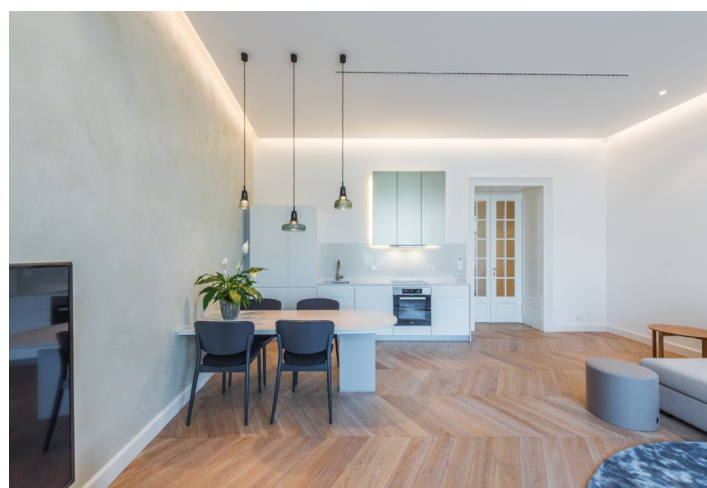




Apartment One-bedroom (2+kk)

Ask for price

106 m², Prague 1, Staré Město, Betlémská





Apartment One-bedroom (2+kk)

[Ask for price](#)

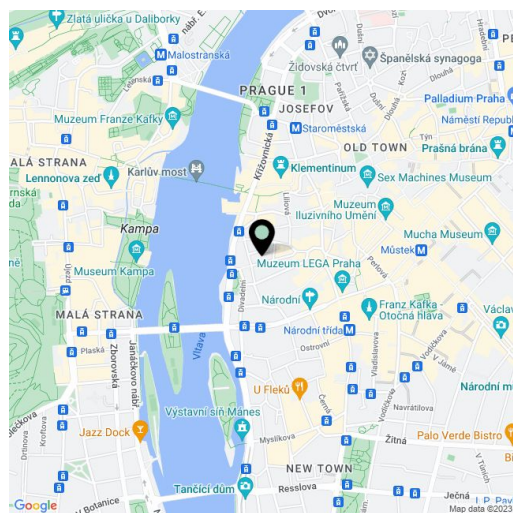
106 m², Prague 1, Staré Město, Betlémská

Total area	106 m²
Parking	Garage parking.
Garage	Yes
Cellar	Yes
PENB	G
Reference number	32143
Available from	Immediately

Boasting unforgettable views of the Vltava embankment, the Prague Castle, Charles Bridge, Malá Strana (Lesser Side) and Petřín Hill, this is a high end, fully furnished 1-bedroom riverfront apartment in an exclusive location. Situated on the first floor in a grand Classicist residence from 1848, that has undergone a meticulous renovation with great attention to preserving the original architectural details. The building offers a magnificent foyer and common areas by the renown Mimolimit studio, with stone staircases, a reception and security, lifts and garage parking. The corner building is set in a unique location in the historic and socio-cultural center of Prague, in the original residential area on the Smetanovo nábřeží riverbank, in-between the Charles Bridge and the National Theatre. Luxurious living in a prestigious location with a unique spirit, a distinctive atmosphere and great transportation connections.

The interior features a comfortable living room with a dining area, a fully integrated kitchen and wonderful panoramic views of the river and beyond, one bedroom facing the quiet back yard, a shower room with a toilet, a corridor with storage, a utility room, and an entrance hall rebuilt from an original courtyard terrace.

Top standard equipment and finishes, hardwood floors, large format tiles, security entry door, built-in wardrobes in the hall and bedroom, high ceilings, automatic blinds, central heating, washer, dryer, Miele kitchen appliances, dishwasher, induction cooktop, two TV sets, video entry phone, alarm, **internal communication and camera system in the building**, chip access, **cellar**. One **garage parking** space is included. Service charges and utilities are billed separately.



* Area of the unit according to the Civil Code. The area consists of the sum total area of the entire unit bounded by perimeter walls.