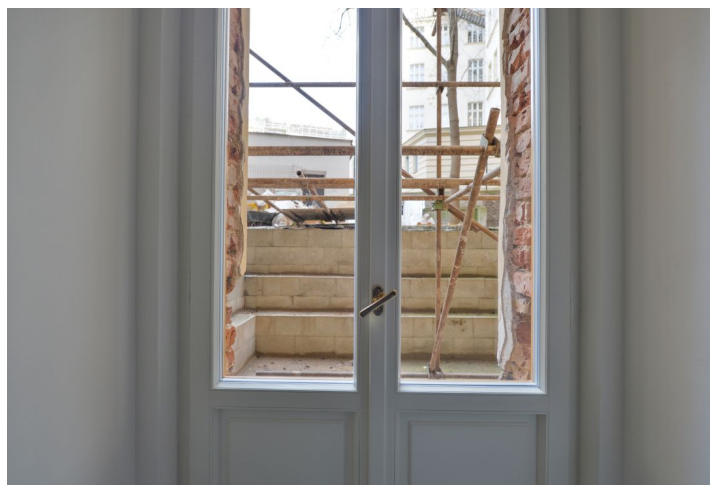




## Apartment One-bedroom (2+kk)

Ask for price

50 m², Prague 3, Vinohrady, Slavíkova





## Apartment One-bedroom (2+kk)

[Ask for price](#)50 m<sup>2</sup>, Prague 3, Vinohrady, Slavíkova

Total area	50 m <sup>2</sup>
Garden	24 m <sup>2</sup>
Parking	-
Cellar	Yes
PENB	G
Reference number	31725

This apartment with a front garden is located in the basement of a boutique residential project, consisting of the reconstruction of a 19th-century apartment building. In an attractive residential area of Vinohrady just a few steps from Riegrovy Sady Park, Jiřího z Poděbrad Square, or the Žižkov TV Tower. Completion is scheduled for summer 2020.

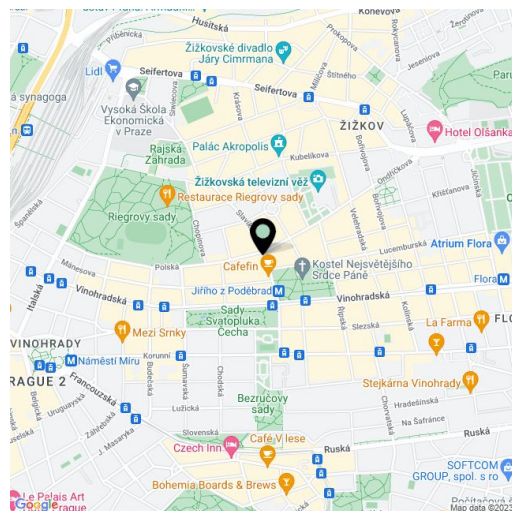
The layout offers a living room with access to a front garden, a kitchen, a bedroom with windows facing the courtyard, and a bathroom with a toilet.

The apartment is offered in a completely finished state with the option of white walls finishing (i.e. before the completion of the final surfaces - floors, tiles). Facilities include **oak floors**, large-format tiles, high quality sanitary ware, **cassette interior doors** and **replicas of casement windows**, double-wing entrance doors with period mouldings, data distribution, a home phone, and a preparation for a satellite TV. Heating will be provided by a central boiler room in the basement. The purchase price includes a **cellar**.

The sought-after location provides all civic amenities and **easy access to the center** thanks to the close proximity of a tram stop and the Jiřího z Poděbrad metro station (line A). Within walking distance, there are both kindergartens and elementary schools, high schools, shops, cafes, and restaurants, the Akropolis Palace, **Mahlerovy Sady** Garden with the Žižkov TV Tower and the Sokol Královské Vinohrady swimming pool in **Riegrovy Sady Park**.

Interior 49.6 m<sup>2</sup>, front garden 24 m<sup>2</sup>, cellar.

In addition to regular property viewings, we also offer **real time video viewings** via WhatsApp, FaceTime, Messenger, Skype, and other apps.



\* Area of the unit according to the Civil Code. The area consists of the sum total area of the entire unit bounded by perimeter walls.



## Apartment One-bedroom (2+kk)

50 m², Prague 3, Vinohrady, Slavíkova

Ask for price

