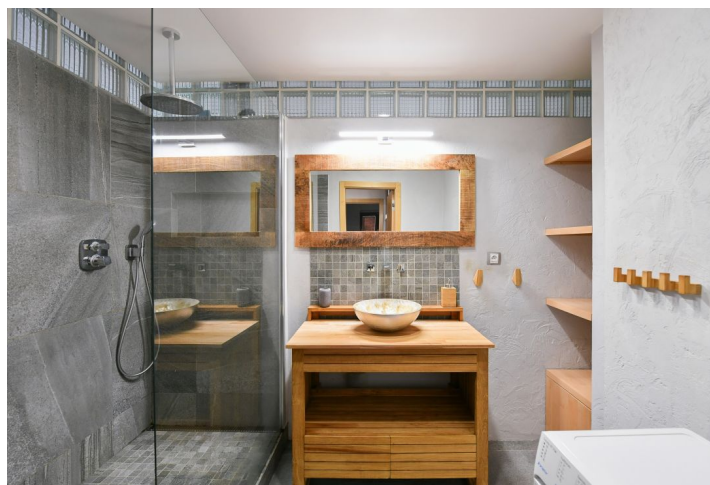
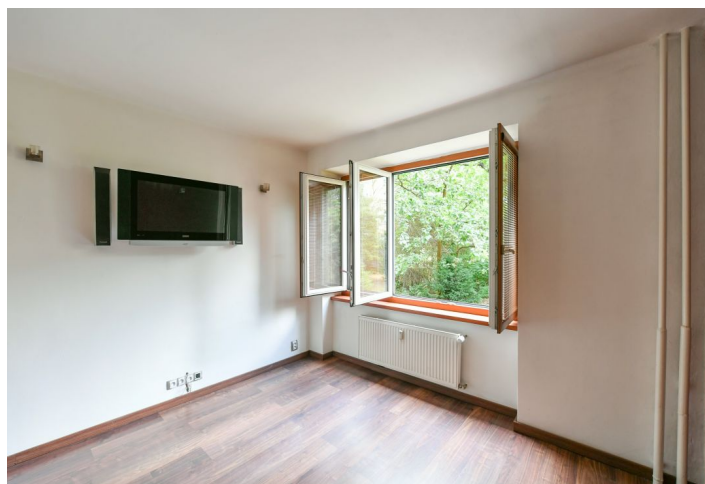




Apartment Two-bedroom (3+kk)

Rented

85 m², Prague 10, Strašnice, Donatellova





Apartment Two-bedroom (3+kk)

Rented

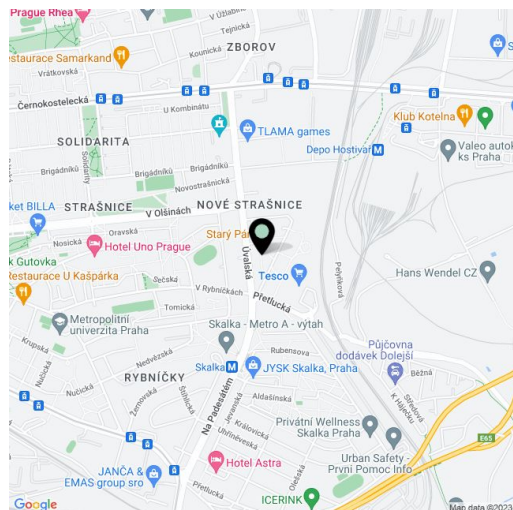
85 m², Prague 10, Strašnice, Donatellova

Total area	85 m²
Parking	-
Cellar	Yes
Service price	Deposit for building charges, water, and heating CZK 4,400/month. Electricity - transferred to the tenant.
PENB	G
Reference number	31713
Available from	Immediately

This fully refurbished, partly furnished apartment is on the upper ground floor of a residential building on a quiet street in a Prague 10 residential neighborhood abundant with greenery. A location with full amenities within easy reach, just moments from the local Tesco, with great access to the city center, moments from a bus stop, a five-min. walk from the Skalka metro station, and a five-min. drive to the southern section of the South Connecting Road.

The apartment features a living room with a fully fitted open plan kitchen and dining area, two bedrooms, a **large fitted walk-in closet**, a bathroom with a shower, a separate toilet, and an entrance hall.

Green views, laminate floors, tiles, wooden interior doors, built-in wardrobes in the hall and one bedroom, central heating, blinds, dishwasher, induction cooktop, microwave oven, UPC cable, cellar. The apartment is **unfurnished** despite the photos.



* Area of the unit according to the Civil Code. The area consists of the sum total area of the entire unit bounded by perimeter walls.