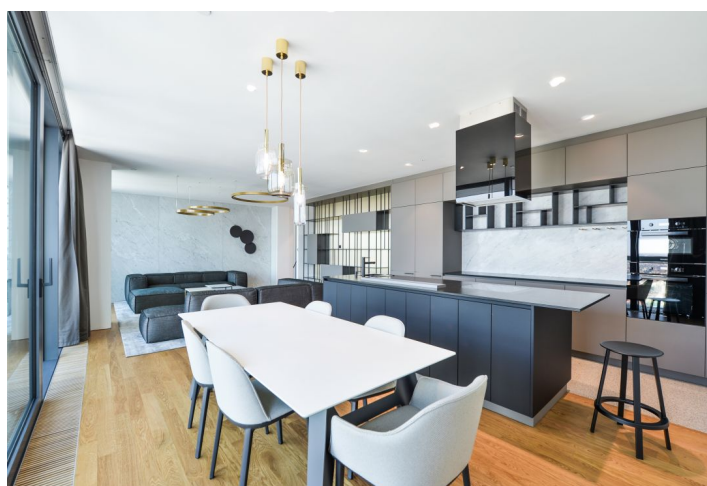
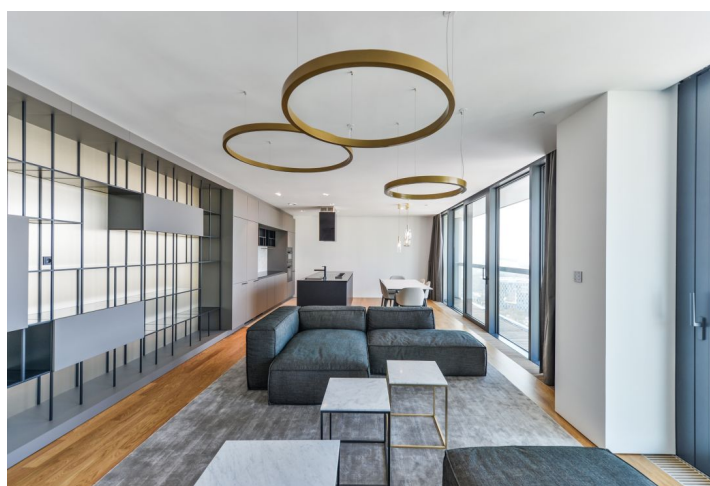
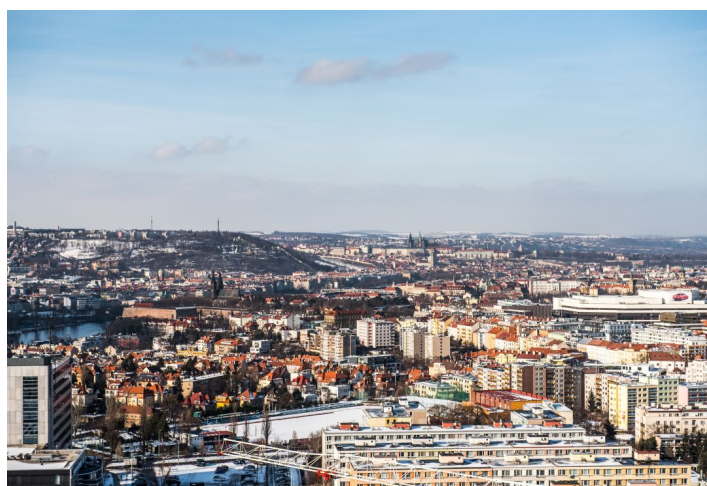
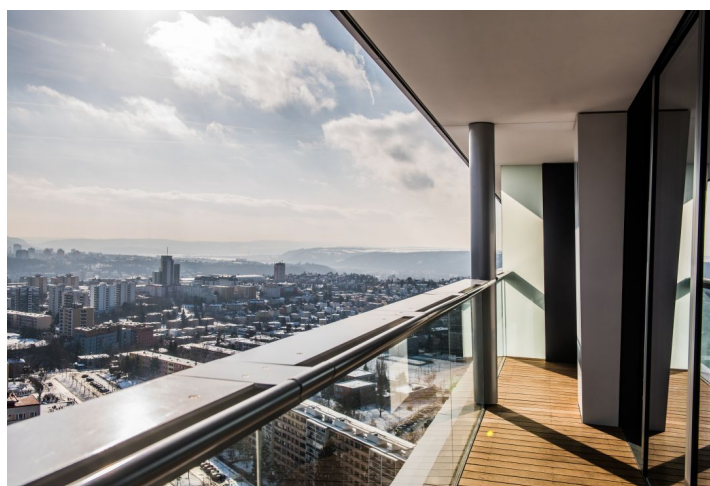




Apartment Three-bedroom (4+kk)

Rented

189 m², Prague 4, Krč, Milevská





Apartment Three-bedroom (4+kk)

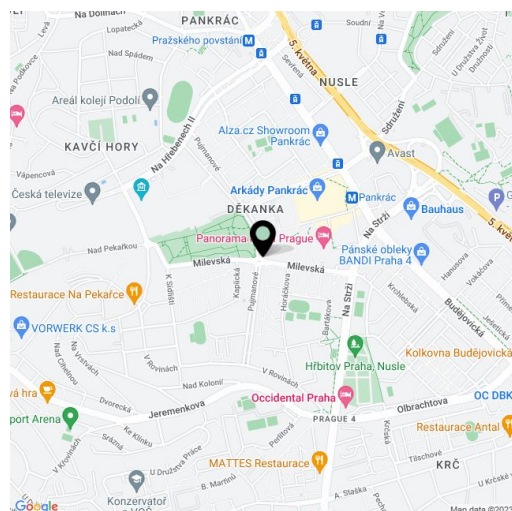
Rented189 m², Prague 4, Krč, Milevská

Total area	210 m ²
Floor area*	189 m ²
Terrace	21 m ²
Parking	Two garage parking spaces.
Garage	Yes
Cellar	Yes
PENB	B
Reference number	31630
Available from	Immediately

Deluxe apartment in a building with a timeless appeal suitable for the most discerning clients. This brand new, fully furnished 3-bedroom 2-bathroom apartment for rent is surrounded by 2 wraparound terraces boasting unparalleled, unobstructed views of Prague. Situated on the 25th floor of the unique, 104 m², thirty-floor V Tower high-rise, currently the tallest residential building in Prague. The building is located in the Pankrác business zone in close to the Central Park and Kavčí Hory Park, with easy access to international schools in Prague 4. Its numerous amenities include a 24/7 reception offering concierge services, security, a fitness center, an indoor pool, a spa incl. a hot tub, a steam room, a Finnish sauna, a golf simulator, a conference room, a private screening room, a playroom, a fast charging station for electric cars, and more. Designed with an eye for detail and featuring efficient technologies, the building uses renewable sources of energy, sustainable materials, and eco-friendly cooling, heating, and ventilation.

The interior consists of a living room with a dining area and a fully fitted open plan kitchen, 3 bedrooms - a master bedroom connected to **two walk-in closets** and a bathroom, two more bedrooms, each with its own **walk-in closet**. There is also another separate **walk-in closet**, a bathroom with a shower and a toilet, a utility room, a guest bathroom, and an entrance hall. **Two terraces** wrap around the whole perimeter of the apartment and are accessible from all of the main rooms.

It boasts an interior designed by the ADR architectural studio (architects Aleš Lapka and Anna Vildová), **floor-to-ceiling French windows throughout**, views of the Prague Castle, Petřín Hill, Vyšehrad Castle, and the Vltava River, **Carrara marble tiles** in the bathrooms, the kitchen, and the living room, built-in wardrobes and storage space, **hardwood floors**, carpets, a security entry door, a **smart home system**, master switch, underfloor heating, Villeroy & Boch and Hansgrohe bathroom fixtures and fittings, Miele appliances, a washer and dryer, a dishwasher, an induction cooktop, a microwave oven, a video entry phone, wheelchair accessibility, a **cellar**. **Two garage parking spaces** are included in the purchase price. Service charges, water, heating and electricity CZK 24,000 per month. Available from March 2022.



* Area of the unit according to the Civil Code. The area consists of the sum total area of the entire unit bounded by perimeter walls.



Apartment Three-bedroom (4+kk)

189 m², Prague 4, Krč, Milevská

Rented

V TOWER Prague, a.s. Na Štěstí 1020/60, Praha 4 - Naše PSČ 140 02
POZN. Společnost V TOWER Prague, a.s. si vyhrazuje právo změny.
NOTE: V TOWER Prague, a.s. reserves the right to make changes.

WWW.KIDWEE.CZ

